

2014 State of the Village

Address to the Lemont Area Chamber of Commerce

Mayor Brian K. Reaves

March 05, 2014



WELCOME & INTRODUCTIONS

Village Board of Trustees



Debby Blatzer – Public Works

Paul Chialdikas – Economic Development

Cliff Miklos – Public Safety

Rick Sniegowski – Finance

Ron Stapleton – Planning & Building

Jeanette Virgilio – Downtown / I&M Canal

WELCOME & INTRODUCTIONS

LEMONTOPOLY
Village of Fair

Junior Achievement

LHS Junior Achievement
Lemontopoly

<http://lemontopoly.com>

TODAY'S AGENDA

Year in Review

Last Year's Completed Projects and Big Changes

Looking to the Future

Ongoing Projects & New Initiatives



VILLAGE HALL & NEW STAFF



METRA



Photo courtesy of WTTW.com

MAJOR INFRASTRUCTURE



WINTER WEATHER



NEW WORLD SYSTEMS

http://newworld.lemont.il.gov/Logos/FinancialManagement/GLAccounts/GLInquiry.x... G/L Account Inquiry

Convert Select Logos - TEST Suggested Sites Get more Add-ons Civic Plus Logos.NET

New World Systems Lemont, IL

myFavorites | Financial Management | Utility Management | Community Development | Maintenance

G/L Account Inquiry - 10.30.410.0000.521.30 - Building & Planning Services Development Plan Review

Fiscal Year 2014

G/L Account Enter Value

Search Reset

- 521.05 Building & Planning Services General
- 521.30 Building & Planning Services Develop
- 521.35 Building & Planning Services Subdivis
- 521.40 Building & Planning Services Building
- 521.55 Building & Planning Services Mapping
- 521.70 Building & Planning Services Other Sr
- 521.80 Building & Planning Services Eng. Se
- 521.85 Building & Planning Services Eng. Se
- 521.90 Building & Planning Services Other Sr
- 521.95 Building & Planning Services Other Sr
- 525.05 Communications Postage
- 525.15 Communications Cell Phones
- 540.05 Printing/Advertising Recording and Le
- 540.10 Printing/Advertising Outside Print Sen
- 560.05 Office Supplies General
- 420 - Economic Development
- 35 - Building
- 40 - Engineering
- 50 - Information Technology
- 90 - General Government
- 91 - Public Safety Capital
- 92 - Public Works Capital
- 100.01 Cash Pooled Cash
- 100.15 Cash Forfeiture
- 101.05 Money Market Illinois Funds General
- 101.25 Money Market E-Pay
- 101.40 Money Market IL Metropolitan Investment Fi

Summary Detail Five Year Trend **Budget Analysis** Budget History

10.30.410.0000.521.30 (General Fund.Planning & Economic Development.Planning Division.Non Program.Building & Planning Services.Development Plan Review)

Budget Type Detail Account

Fiscal Year 2014

| | |
|---------------------------------|-------------------|
| Original Budget | \$7,600.00 |
| Budget Amendments - Posted | (\$6,000.00) |
| * Unposted Positive B/A | \$0.00 |
| * Unposted Negative B/A | \$0.00 |
| Total Budget | \$1,600.00 |
| Expenses/Revenues | \$1,015.00 |
| Encumbrances | \$0.00 |
| Unposted Transactions (Details) | \$0.00 |
| Transaction Amount | \$0.00 |
| Available Budget | \$585.00 |

* = Budget Amendment Excluded

Account Detail Unposted Activity

Budget Analysis

| | |
|--------------------|-----|
| Expenses/Revenues | 63% |
| Available Budget | 37% |
| Encumbrances | 0% |
| Transaction Amount | 0% |

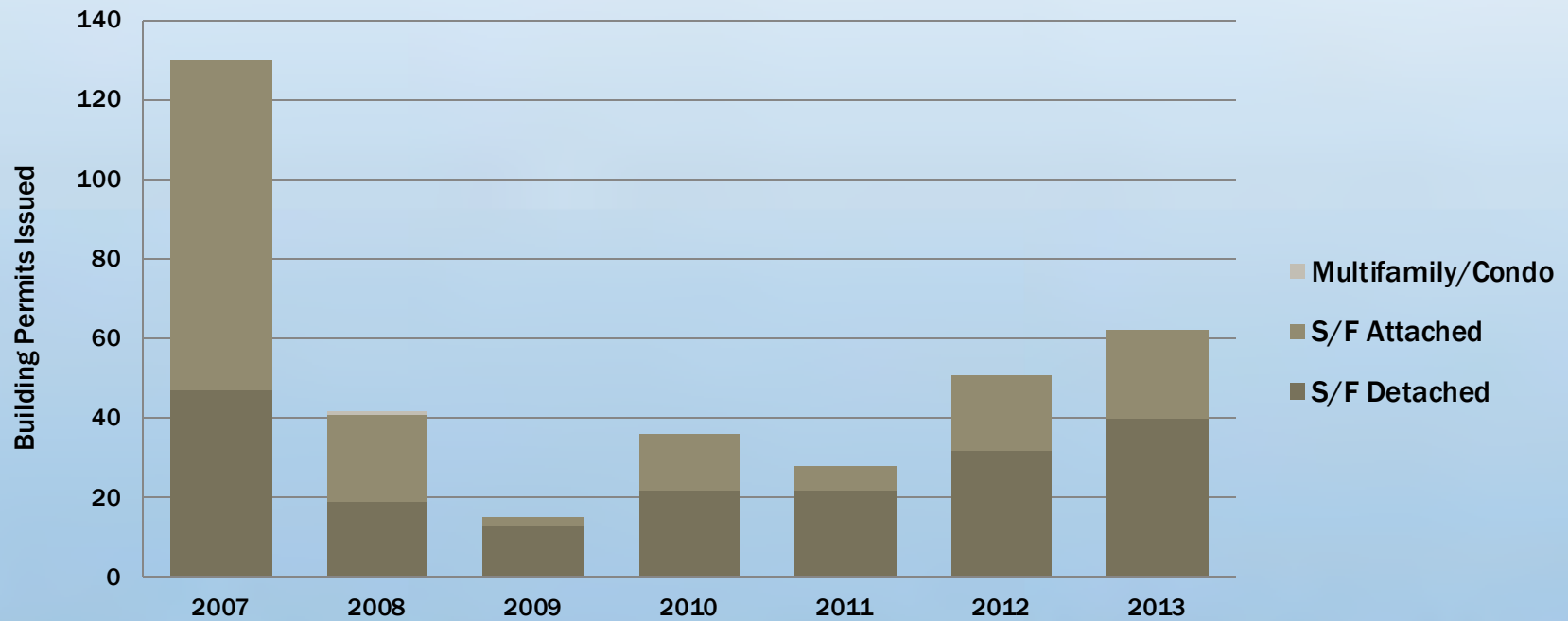
Copyright 2014, New World Systems, Inc. All rights reserved.

DOWNTOWN TIF DISTRICT



CONSTRUCTION TRENDS

Residential Permits by Type, 2007-2013



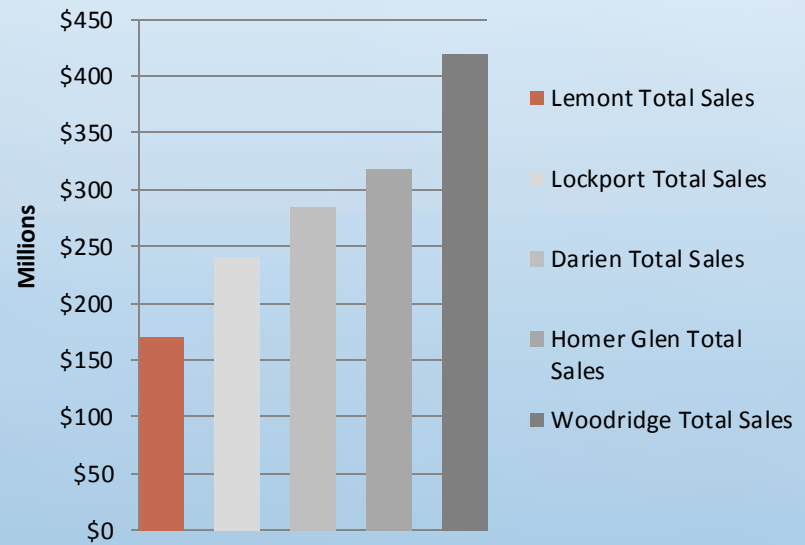
BUSINESS TRENDS

17 New Businesses

**9 Businesses Moved
or Sold**

10 Businesses Closed

2012 Taxable Retail Sales



Source: IL Dept. of Revenue



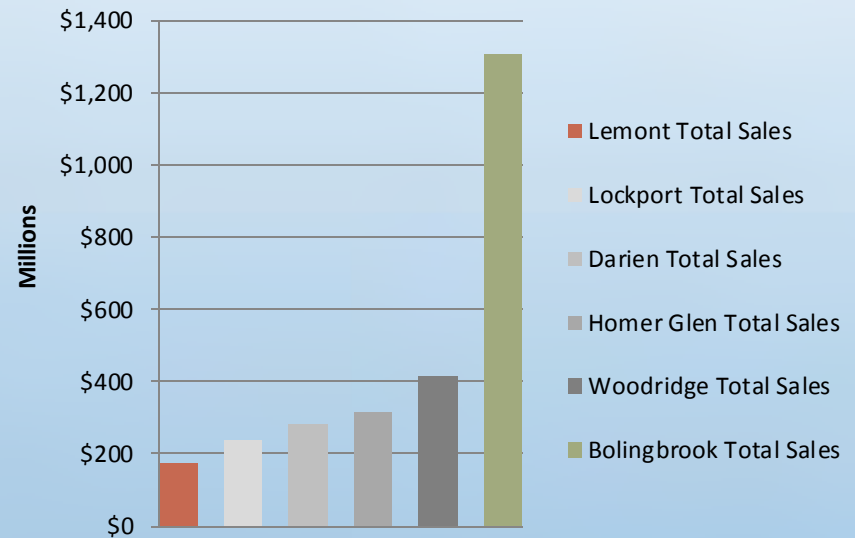
BUSINESS TRENDS

17 New Businesses

**9 Businesses Moved
or Sold**

10 Businesses Closed

2012 Taxable Retail Sales



Source: IL Dept. of Revenue



BUSINESS TRENDS



New Businesses

Anna's Fashion Outlet

All Paws Pantry

Carrol Distributing, Inc.

Custom Cellular, Inc.

Dollar Tree

Dotty's

J-Stack HVAC

Krystyna's Jewelry

Lemont ENT, Inc.

Lincoln Packaging

Look-Nu Car Wash

MaMa D's

Perfect Mulch Products

Podhalanska, LLC

Rosati's Pizza

State Farm - John Skopich

Simply Yoga

Westway Coach

Unlimited Carrier Inc.

Seaways Transportation



BUSINESS TRENDS



***OPENING SOON
IN LEMONT!***

***Jilley's
Boutique***



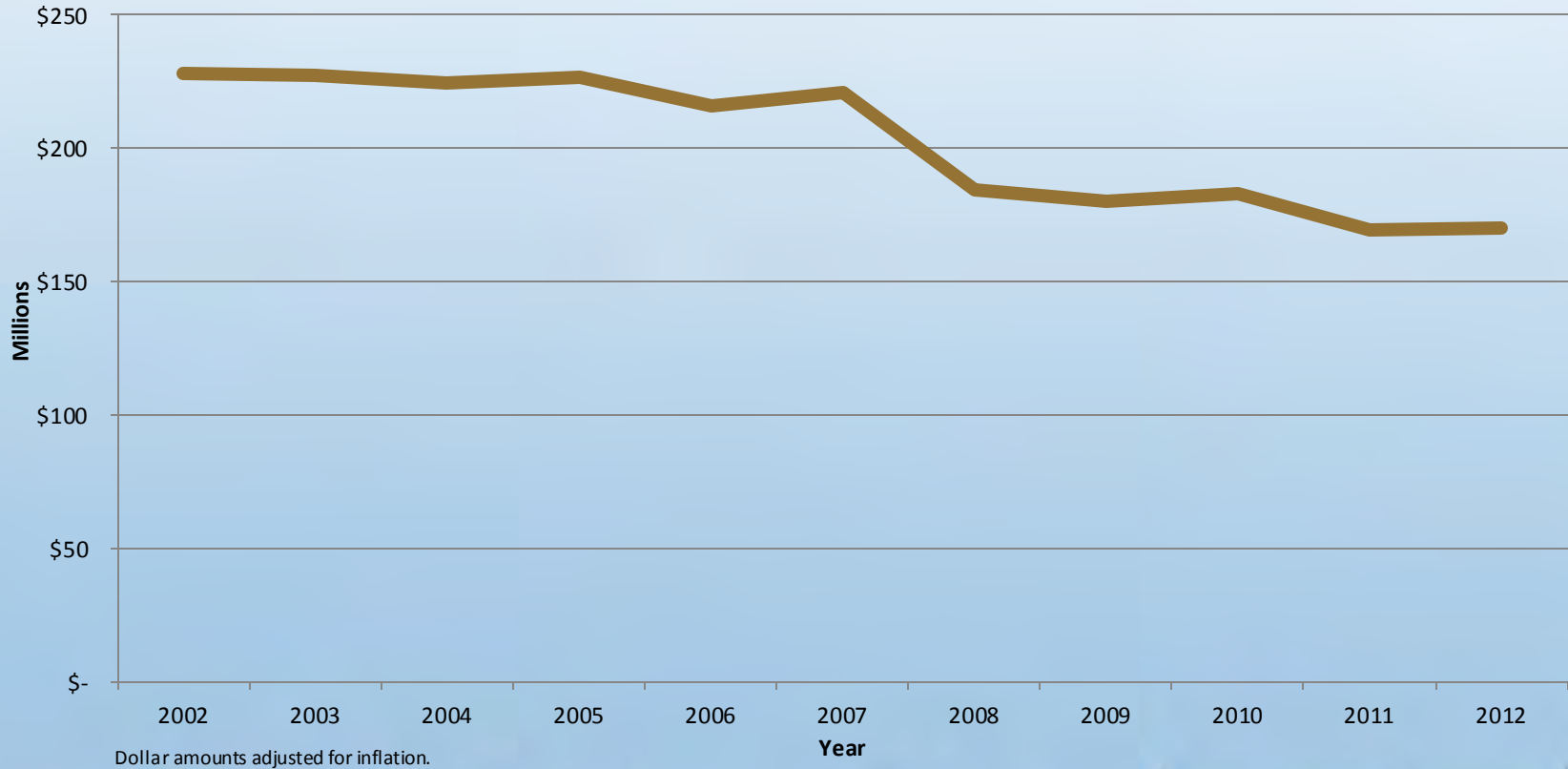
RETAIL ACTIVITY

General Fund Revenue by Type



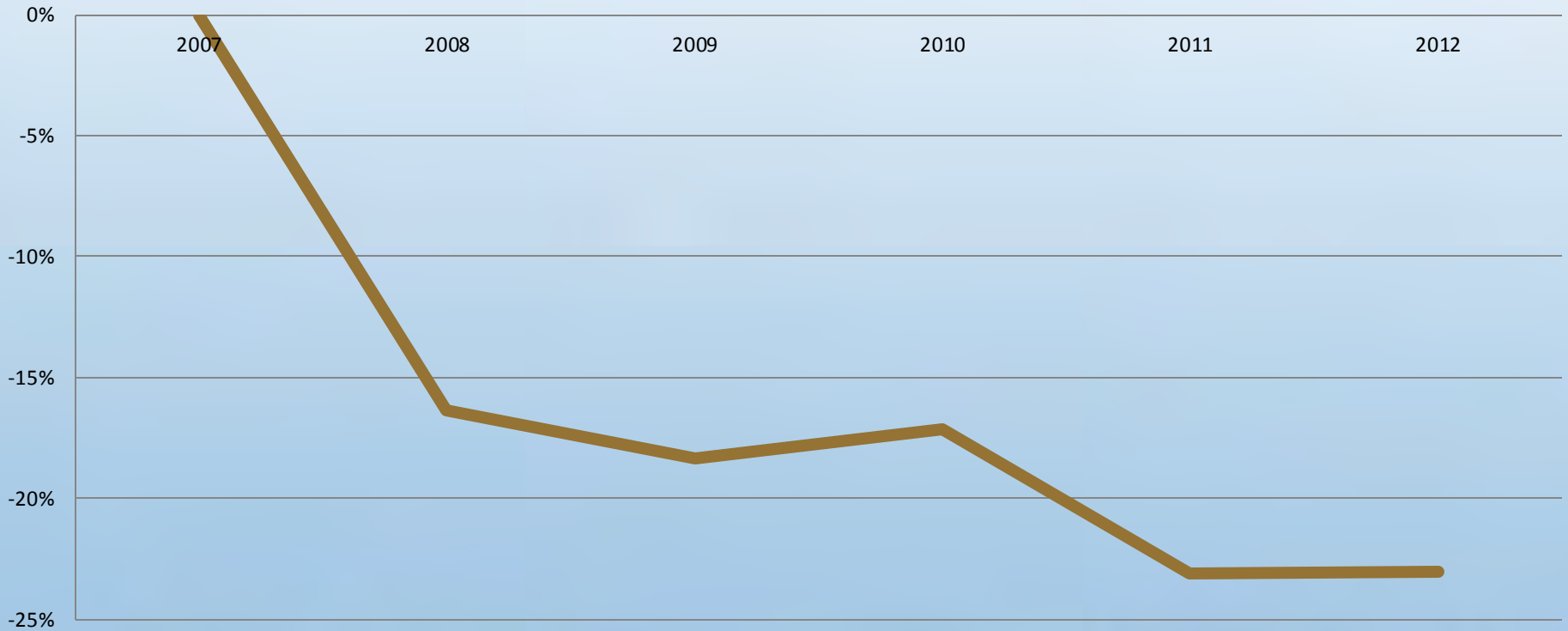
RETAIL ACTIVITY

Lemont Taxable Retail Sales 2002 - 2012



RETAIL ACTIVITY

Lemont Sales Tax - Percent Change from 2007 Base Year



Dollar amounts adjusted for inflation



RETAIL ACTIVITY

Challenges to Economic Development

- *Cook County Taxes & Border Community Location*
- *Lack of Density (Residential & Daytime Population)*
- *Lack of Pass-by Traffic*
- *Non-Home Rule Status*



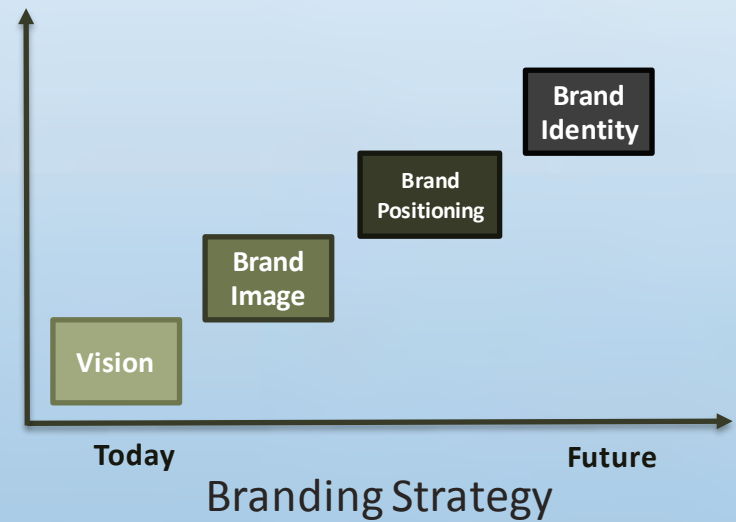
PLANNING INITIATIVES



www.lemont.il.us/lemont2030

THE VILLAGE OF LEMONT,
ILLINOIS
STRATEGIC PLAN

OCTOBER 2012



PLANNING INITIATIVES

THE VILLAGE OF LEMONT,
ILLINOIS
STRATEGIC PLAN

OCTOBER 2012



Adopted Oct. 2012

**Primarily Internal
Process**

Short-term

**Sets Immediate
Priorities**

To be Adopted 2014

**Substantial
Public Input**

Long-term

All-Inclusive

In Progress

**Collaborative
Effort**

Long-term

**Focused on Defining
Lemont's Unique
Identity**



VILLAGE INITIATIVES

Route 83 & Main (Gateway TIF District)



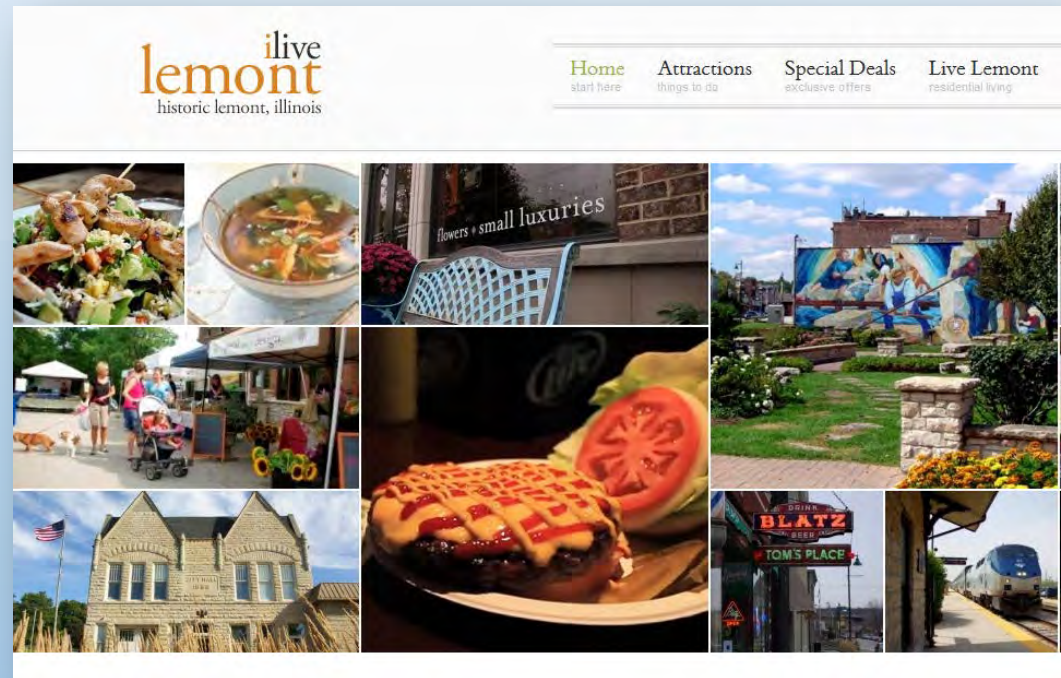
VILLAGE INITIATIVES

Sports Complex



VILLAGE INITIATIVES

Marketing & Advertising



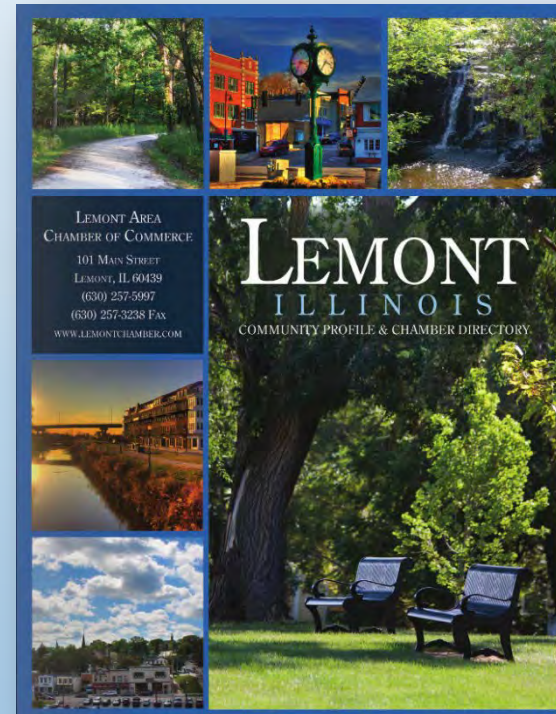
VILLAGE INITIATIVES

Marketing & Advertising



COOPERATIVE INITIATIVES

Marketing & Promotion

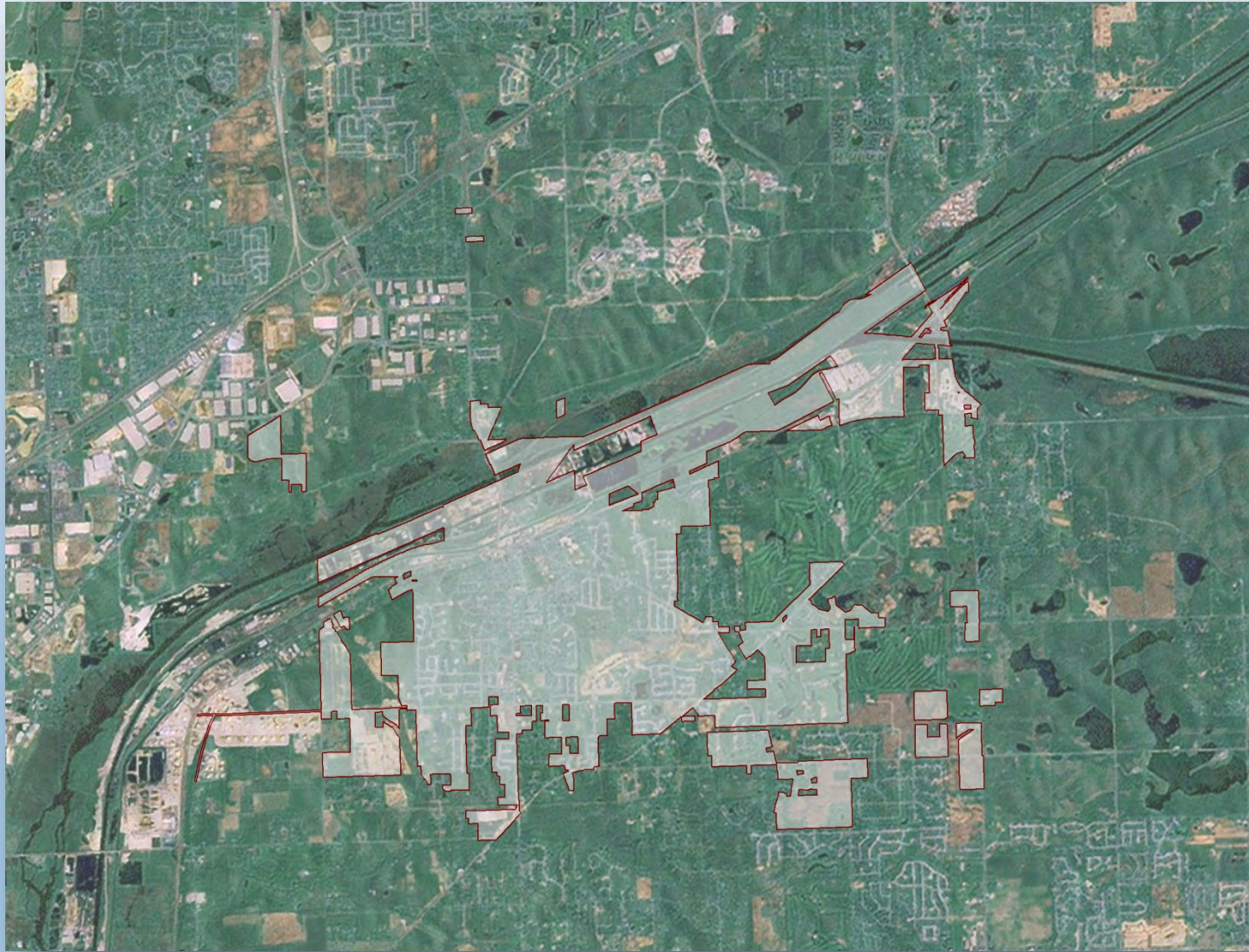


COOPERATIVE INITIATIVES

Quarterly Business Community Forums



CLOSING REMARKS



THANK YOU

