

**HISTORIC PRESERVATION COMMISSION
AGENDA
REGULAR MEETING**

January 12, 2017 – 6:30 p.m.

**LEMONT VILLAGE HALL
418 MAIN STREET**

- I. CALL TO ORDER**
- II. ROLL CALL**
- III. APPROVAL OF MINUTES: Meeting December 8, 2016**
- IV. CHAIRMAN'S REPORT**
- V. PUBLIC HEARINGS**
- VI. APPLICATIONS**
 - A.** Certificate of Appropriateness for a new small cell antenna near 111 Main St.
 - B.** Certificate of Appropriateness for windows, doors, ramp, and sign at the 200 E Illinois St.
- VII. NEW BUSINESS**
- VIII. PLANNING & ECONOMIC DEVELOPMENT DIRECTOR COMMENTS**
- IX. AUDIENCE PARTICIPATION**
- X. ADJOURN**

TO: Historic Preservation Commission (HPC)

FROM: Adewale Adetunji, Village Intern

THUR: Heather Valone, Village Planner

SUBJECT: Case 16-09 Small Cell Antenna near 111 Main Special Use

DATE: January 2, 2017

SUMMARY/BACKGROUND

The applicant is requesting a Certificate of Appropriateness for a small cell antenna near 111 Main Street. The purpose of the small cell installation will improve cellular services for Verizon wireless customers within the area. On December 8, 2016, the HPC reviewed the application proposing equipment on the top of the Common Wealth Edison (ComEd) utility pole and supporting equipment mounted on the pole 10 ft. from the ground level (Figure 1). The Applicant also proposed the equipment would be painted to match the ComEd pole to minimize the appearance.



Figure 1 The previous 10 ft. height of the supporting equipment



Figure 2 The blue arrow shows the approximate new 19 ft. location of the supporting equipment.

The HPC indicated that although the equipment on the top of the pole's appearance was minimized, the supporting equipment only 10 ft. above grade still needed to be further minimized. The HPC recommended increasing the height of the supporting equipment to 22 ft. above grade. The applicant has revised the supporting equipment to be placed 19 ft. above grade on the ComEd pole (Figure 2). Even though the supporting equipment is only 19 ft. above grade, it is still at a height that minimally impacts the façade of the neighboring building.

ATTACHMENTS

1. Applicant submittals



CONSULTANT TEAM

PROJECT CONSULTANT: TERRA CONSULTING GROUP, LTD.
600 BUSSE HIGHWAY
PARK RIDGE, IL 60068
(847) 698-6400

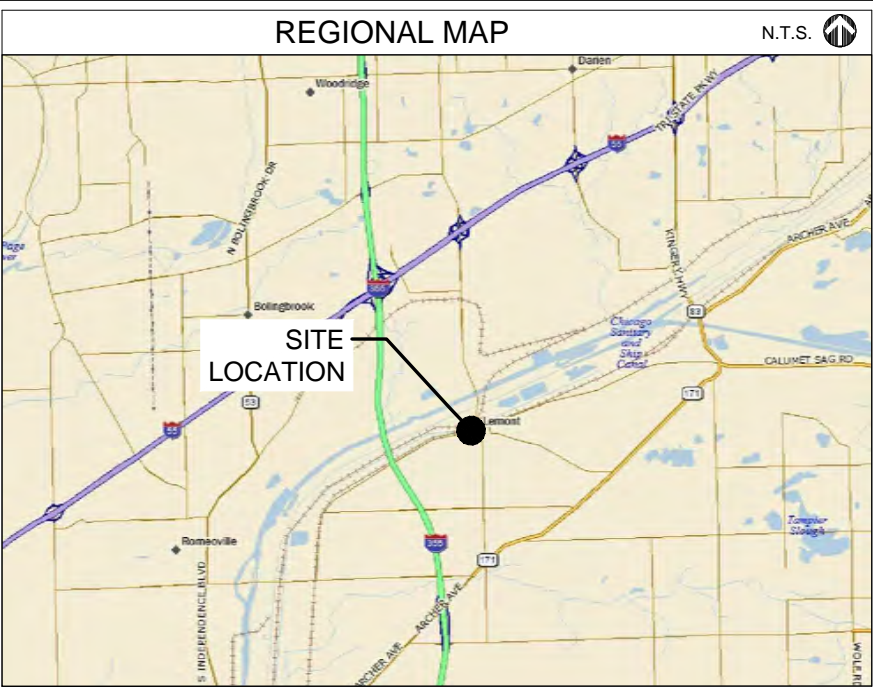
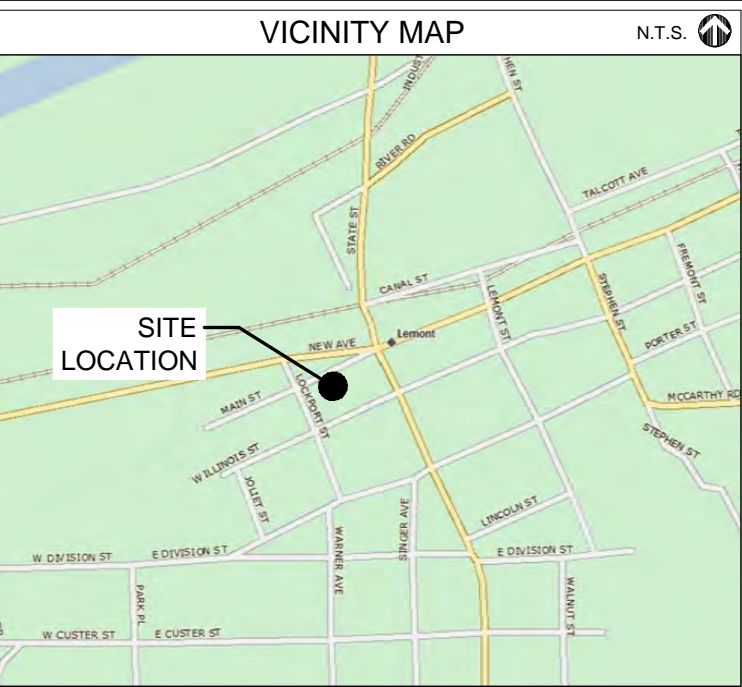
STRUCTURAL: HUTTER FRANKINA ENGINEERING
32 W 273 ARMY TRAIL RD, SUITE 100
WAYNE, IL 60184
(630) 513-6711

SURVEY: ASM CONSULTANTS, INC.
16 E. WILSON STREET
BATAVIA, IL 60510
(630) 879-0200

PROJECT TYPE

PROPOSED VERIZON WIRELESS SMALL CELL EQUIPMENT AND ANTENNA ON EXISTING UTILITY POLE. EQUIPMENT TO BE PAINTED TO MATCH POLE. POWER TO BE DELIVERED VIA OVERHEAD. FIBER TO BE DELIVERED VIA OVERHEAD (BY OTHERS).

SITE COORDINATES:
LATITUDE: 41° 04' 11" N (1A CERTIFICATION)
LONGITUDE: 88° 06' 01" W (1A CERTIFICATION)
ELEVATION: 645' (1A CERTIFICATION)



APPROVALS

REAL ESTATE: _____

RF: _____

CONSTRUCTION: _____

OPERATIONS: _____

EQUIPMENT ENGINEERING: _____

CHICAGO SMSA
limited partnership
d/b/a VERIZON WIRELESS

TERRA
CONSULTING GROUP, LTD.
600 BUSSE HIGHWAY
PARK RIDGE, IL 60068
PH: 847-698-6400
FAX: 847-698-6401

CHICAGO SMSA

limited partnership

CHICAGO SMSA LIMITED PARTNERSHIP
d/b/a VERIZON WIRELESS
1515 WOODFIELD ROAD, SUITE 1400
SCHAUMBURG, ILLINOIS 60173
PHONE: (847) 619-5397 FAX: (847) 706-7415

LOCATION NUMBER: 292337

SITE NAME: LEMONT METRA SC

111 MAIN STREET LEMONT, IL 60439

1/3/2017
Exp 11/30/2017

PROJECT INFORMATION

PROJECT #: 20141048473

UTILITIES: POWER: COMED ACCT. # 01530-69151 MANNY ALONSO (630) 437-2214
FIBER: CROWN CASTLE RHONDA HILL (708) 256-9638

JURISDICTION: -

OCCUPANCY: UNINHABITED

ZONING: -

CONSTRUCTION TYPE: CO-LOCATION ON UTILITY POLE

PROPERTY OWNER: -

APPLICANT: CHICAGO SMSA limited partnership d/b/a Verizon Wireless 1515 WOODFIELD ROAD SCHAUMBURG, IL 60173

CONSTRUCTION MANAGER: JASON EISELEIN (847) 706-7118

REAL ESTATE MANAGER: SHELDON PEARSON (847) 706-1776

SHEET	DRAWING INDEX	REVISION
T-1	TITLE SHEET	1
LP-1	AERIAL LOCATION & EXHIBIT PHOTO	A
ANT-1	EXISTING SITE ELEVATIONS	A
ANT-2	PROPOSED SITE ELEVATIONS	4
ANT-3	PROPOSED ANTENNA CONFIGURATION	A
ANT-4	ANTENNA DETAILS	A
ANT-5	RADIO UNIT & DISCONNECT DETAILS	1
ANT-6	CABLE DIAGRAMS AND INFORMATION	A
E-1	ELECTRICAL ROUTING PLAN	A
E-2	FIBER ROUTING PLAN	B
E-3	UTILITY ROUTING DETAILS	1
E-4	GROUNDING PLAN & DETAILS	1
S-1	STRUCTURAL DETAILS	3
SP-1	SPECIFICATIONS	A
FULL SCALE PRINT IS ON 22"x34" MEDIA		
L-1	SURVEY	A

REVISIONS

NO.	DESCRIPTION	DATE	BY
1	ISSUED FOR REVIEW	03/25/16	LRB
2	UPDATED WITH FIBER ROUTE	08/17/16	JJR
3	ISSUED FOR FINALS	08/29/16	MPC
4	REVISED EQUIPMENT LAYOUT	10/31/16	MPC
5	RE-ISSUED FOR FINALS	11/01/16	MPC
6	REVISED PAINT COLOR FOR EQUIPMENT	11/03/16	MPC
7	ELEVATED EQUIPMENT LOCATIONS	01/03/16	MPC

LOC #292337
LEMONT METRA SC
111 MAIN STREET
LEMONT, IL 60439

DRAWN BY: JJR

CHECKED BY: TAZ

DATE: 10/19/15

PROJECT #: 81-051

SHEET TITLE
TITLE SHEET

SHEET NUMBER
T-1





1 AERIAL LOCATION
SCALE: N.T.S.



2 EXHIBIT PHOTO OF POLE
SCALE: N.T.S.

**CHICAGO
SMSA**
limited partnership
d/b/a VERIZON WIRELESS



REVISIONS		DESCRIPTION	DATE	BY
NO.	A	ISSUED FOR REVIEW	03/25/16	LRB
	B	UPDATED WITH FIBER ROUTE	08/17/16	JJR
	0	ISSUED FOR FINALS	08/29/16	MPC
	1	REVISED EQUIPMENT LAYOUT	10/31/16	MPC
	2	RE-ISSUED FOR FINALS	11/01/16	MPC
	3	REVISED PAINT COLOR FOR EQUIPMENT	11/03/16	MPC
	4	ELEVATED EQUIPMENT LOCATIONS	01/03/16	MPC

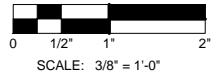
LOC #292337
LEMONT
METRA SC
111 MAIN STREET
LEMONT, IL 60439

DRAWN BY:	JJR
CHECKED BY:	TAZ
DATE:	10/19/15
PROJECT #:	81-051

SHEET TITLE
AERIAL LOCATION &
EXHIBIT PHOTO

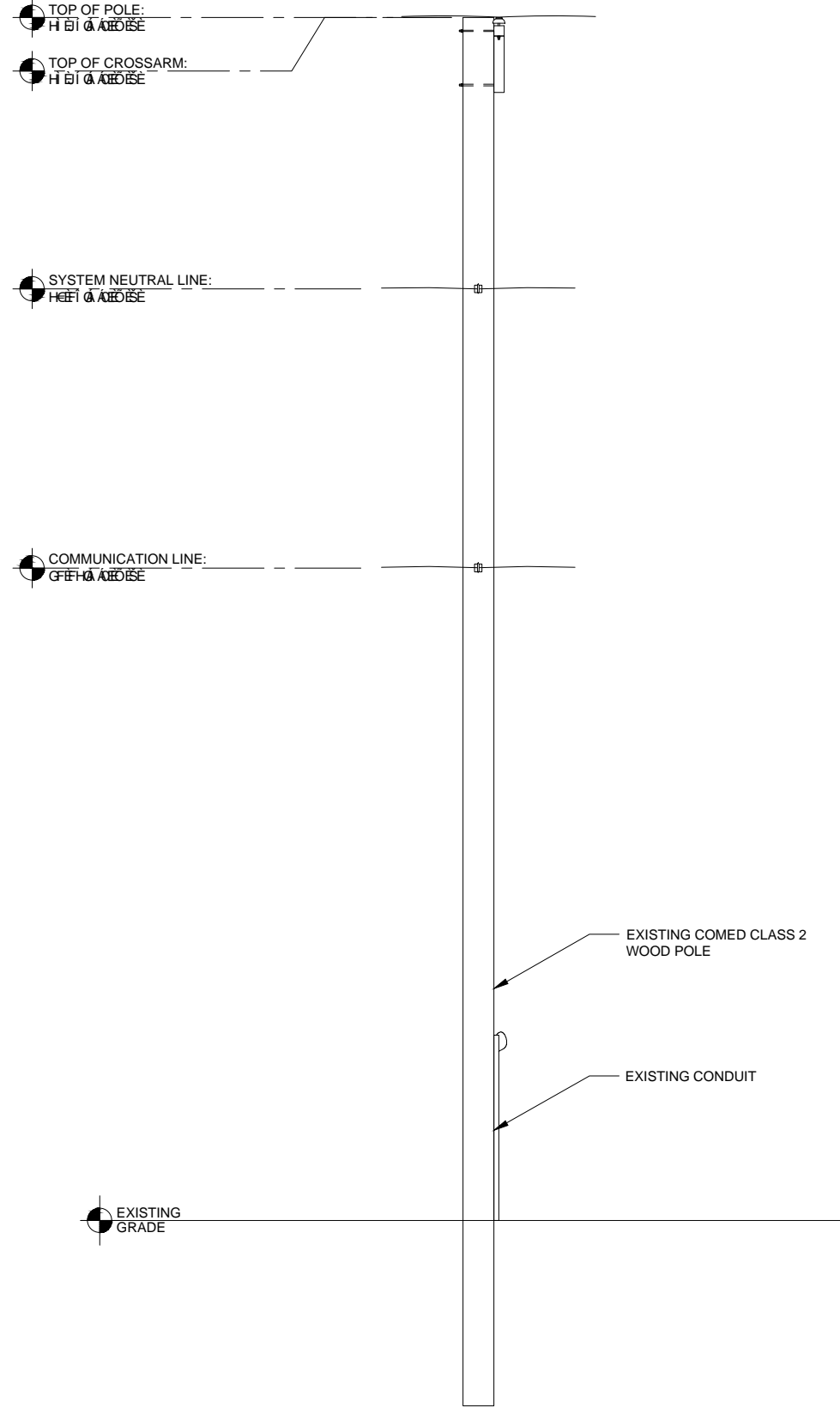
SHEET NUMBER

LP-1



SCALE: 3/8" = 1'-0"

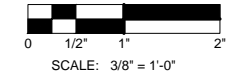
22" x 34" PRINT IS THE FULL SCALE
FORMAT. ANY SIZE OTHER THAN
THAT IS AT REDUCED SCALE.



1 EXISTING NORTH ELEVATION
SCALE: 3/8" = 1'-0"

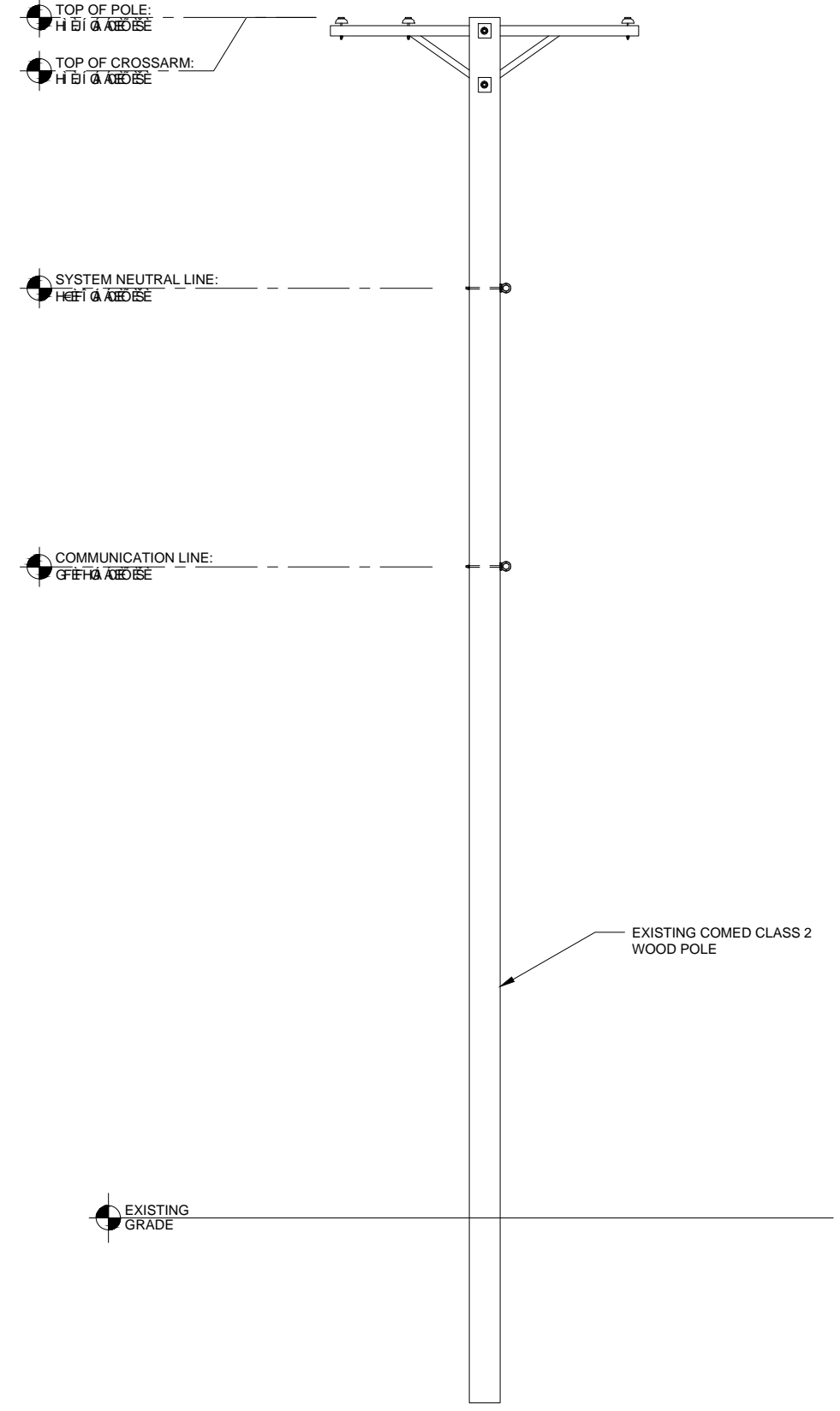
NOTE:
THIS DRAWING IS FOR EXHIBIT
AND LAYOUT PURPOSES ONLY.

PLEASE REFER TO STRUCTURAL
REPORT PREPARED BY HUTTER
FRANKINA ENGINEERING.



SCALE: 3/8" = 1'-0"

22" x 34" PRINT IS THE FULL SCALE
FORMAT. ANY SIZE OTHER THAN
THAT IS AT REDUCED SCALE.



2 EXISTING EAST ELEVATION
SCALE: 3/8" = 1'-0"

CHICAGO
SMSA
limited partnership
d/b/a VERIZON WIRELESS

TERRA
CONSULTING GROUP, LTD.
600 BUSSE HIGHWAY
PARK RIDGE, IL 60068
PH: 847-698-6400
FAX: 847-698-6401

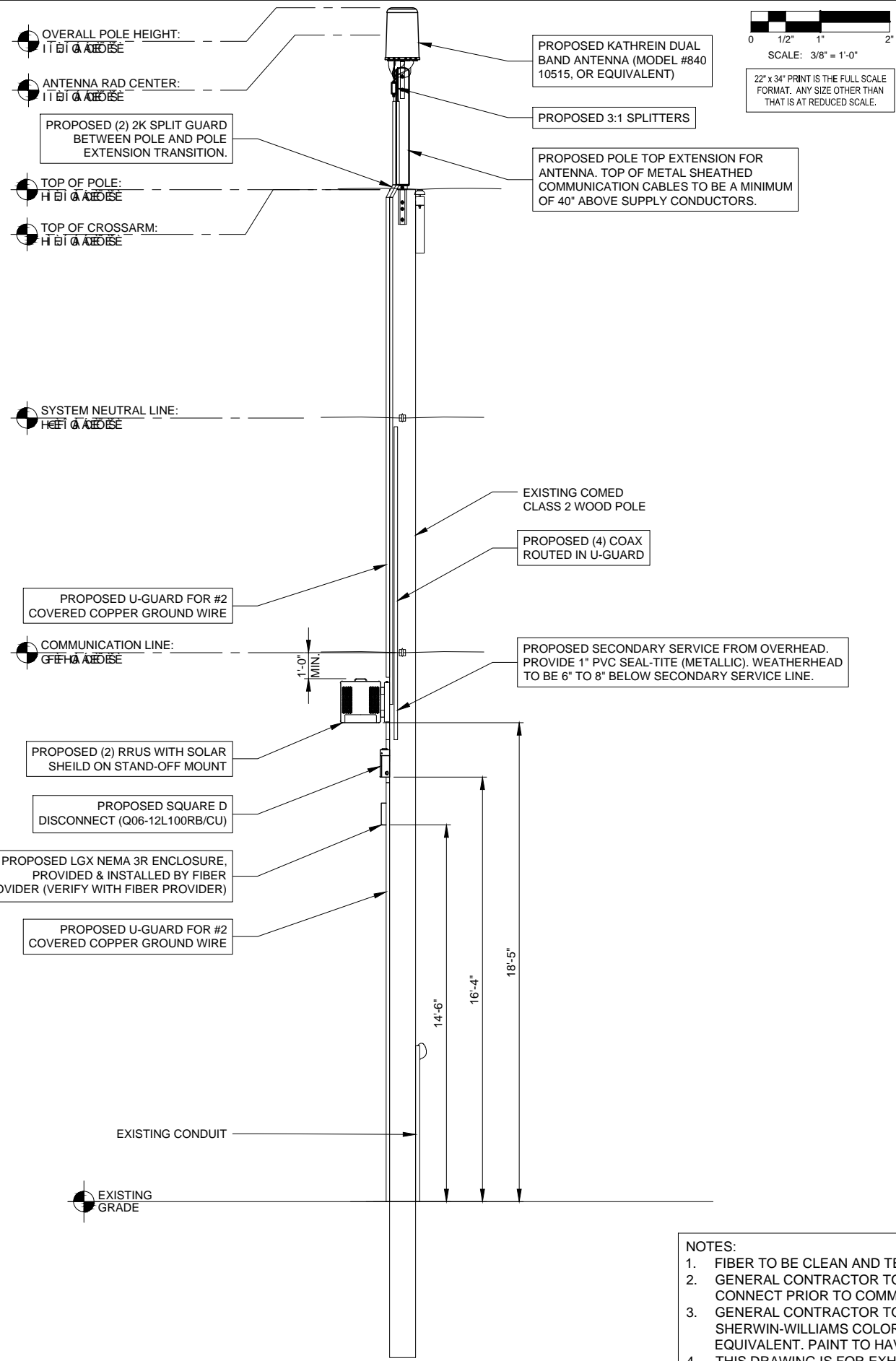
NO.	DESCRIPTION	DATE	BY
A	ISSUED FOR REVIEW	03/25/16	LRB
B	UPDATED WITH FIBER ROUTE	08/17/16	JJR
0	ISSUED FOR FINALS	08/29/16	MPC
1	REVISED EQUIPMENT LAYOUT	10/31/16	MPC
2	RE-ISSUED FOR FINALS	11/01/16	MPC
3	REVISED PAINT COLOR FOR EQUIPMENT	11/03/16	MPC
4	ELEVATED EQUIPMENT LOCATIONS	01/03/16	MPC

LOC #292337
LEMONT
METRA SC
111 MAIN STREET
LEMONT, IL 60439

DRAWN BY: JJR
CHECKED BY: TAZ
DATE: 10/19/15
PROJECT #: 81-051

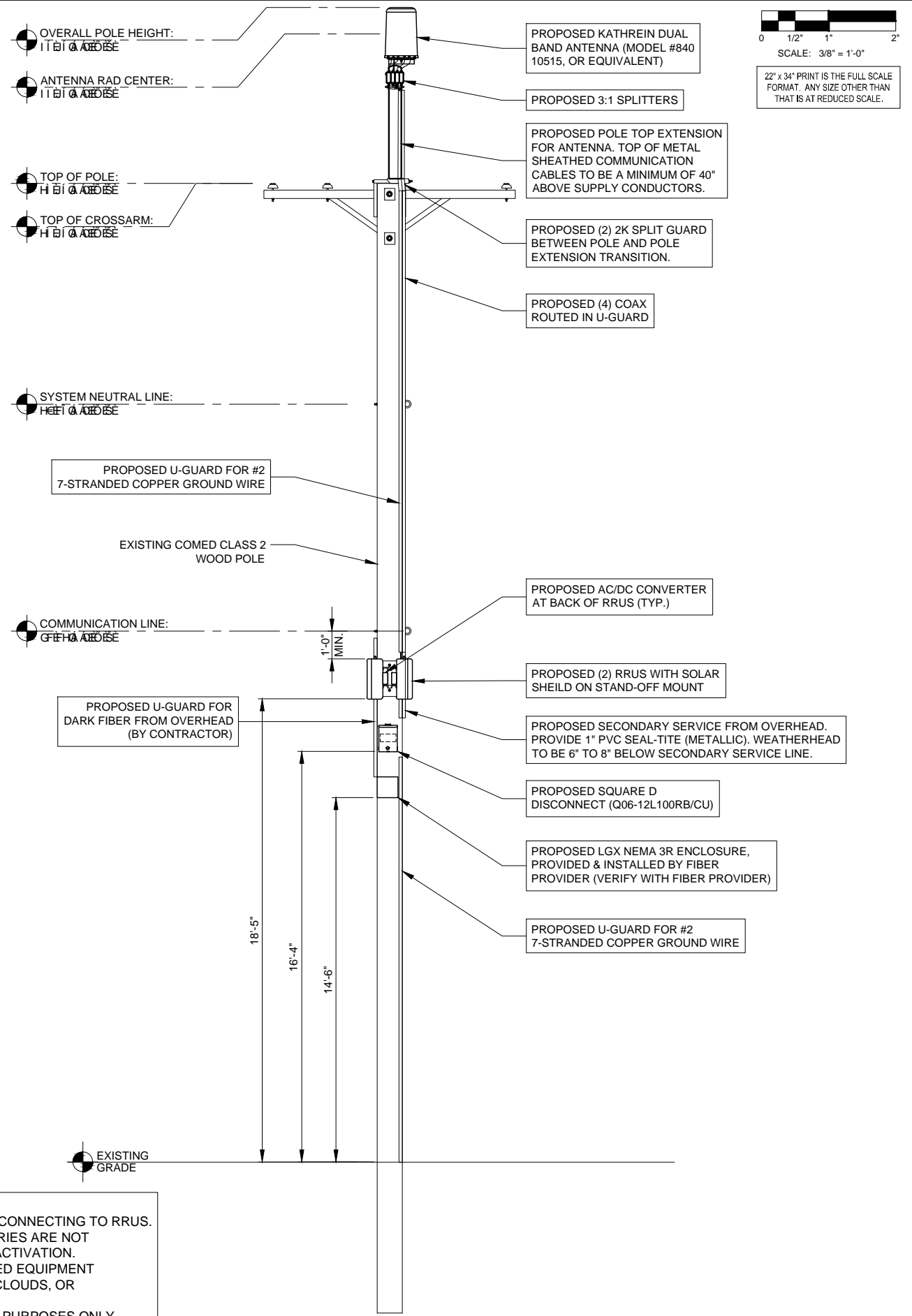
SHEET TITLE
**EXISTING SITE
ELEVATIONS**

SHEET NUMBER
ANT-1



1 EXISTING NORTH ELEVATION
SCALE: 3/8" = 1'-0"

- NOTES:
1. FIBER TO BE CLEAN AND TESTED PRIOR TO CONNECTING TO RRUS.
 2. GENERAL CONTRACTOR TO ENSURE BATTERIES ARE NOT CONNECT PRIOR TO COMMERCIAL POWER ACTIVATION.
 3. GENERAL CONTRACTOR TO PAINT PROPOSED EQUIPMENT SHERWIN-WILLIAMS COLOR SW 7658 GRAY CLOUDS, OR EQUIVALENT. PAINT TO HAVE MATTE FINISH.
 4. THIS DRAWING IS FOR EXHIBIT AND LAYOUT PURPOSES ONLY. PLEASE REFER TO STRUCTURAL REPORT PREPARED BY HUTTER TRANKINA ENGINEERING.



2 EXISTING EAST ELEVATION
SCALE: 3/8" = 1'-0"

CHICAGO SMSA
limited partnership
d/b/a VERIZON WIRELESS

TERRA
CONSULTING GROUP, LTD.
600 BUSSE HIGHWAY
PARK RIDGE, IL 60068
PH: 847-698-6400
FAX: 847-698-6401

NO.	DESCRIPTION	DATE	BY
A	ISSUED FOR REVIEW	03/25/16	LRB
B	UPDATED WITH FIBER ROUTE	08/17/16	JJR
0	ISSUED FOR FINALS	08/29/16	MPC
1	REVISED EQUIPMENT LAYOUT	10/31/16	MPC
2	RE-ISSUED FOR FINALS	11/01/16	MPC
3	REVISED PAINT COLOR FOR EQUIPMENT	11/03/16	MPC
4	ELEVATED EQUIPMENT LOCATIONS	01/03/16	MPC

LOC #292337
LEMONT METRA SC
111 MAIN STREET
LEMONT, IL 60439

DRAWN BY: JJR
CHECKED BY: TAZ
DATE: 10/19/15
PROJECT #: 81-051

SHEET TITLE
PROPOSED SITE ELEVATIONS

SHEET NUMBER
ANT-2



840 10515 840 10516
65° Dual Band Tri-sector Antenna

	Antenna 1	Antenna 2	Antenna 3	Antenna 4	Antenna 5	Antenna 6
Dual Band (MHz)	698-894	1710-2170	698-894	1710-2170	698-894	1710-2170
Dual Polarization	X	X	X	X	X	X
HPBW	65°	65°	65°	65°	65°	65°

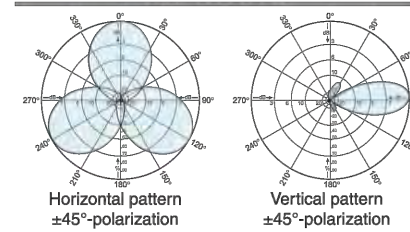


General specifications:

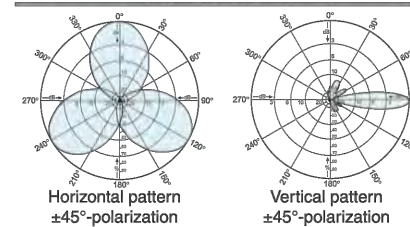
Frequency range	698-894 MHz 1710-2170 MHz
VSWR	<1.5:1
Impedance	50 ohms
Intermodulation (2x20w)	IM3: <-150 dBc
Polarization	+45° upper and lower band -45° upper and lower band
Connector	12 x 7-16 DIN female
Isolation intrasystem intersystem	>30 dB >40 dB (698-894 // 1710-2170 MHz)
Radome color	Brown or grey
Weight	50 lb (22.7 kg)
Height	24 inches (609 mm)
Radome diameter	16 inches (407 mm)
Wind load Side	at 93 mph (150kph) 32 lbf (138 N)
Wind survival rating*	100 mph (160 kph)
Shipping dimensions	32 x 20 x 19 inches (813 x 508 x 483 mm)
Shipping weight	52 lb (23.6 kg)
Mounting	Designed to be mounted on top of a utility pole using a custom mounting bracket supplied by the customer.

See reverse for order information.

698-894 MHz



1710-2170 MHz



Specifications:	698-806 MHz	806-894 MHz	1710-1880 MHz	1850-1990 MHz	1920-2170 MHz
Gain	10.4 dBi	11.6 dBi	13.5 dBi	13.5 dBi	13.2 dBi
Front-to-back ratio (180° ± 30°)	>24 dB (co-polar) >18 dB (total power)	>26 dB (co-polar) >20 dB (total power)	>32 dB (co-polar) >24 dB (total power)	>30 dB (co-polar) >26 dB (total power)	>30 dB (co-polar) >25 dB (total power)
Maximum input power	250 watts (at 50°C)	250 watts (at 50°C)	200 watts (at 50°C)	200 watts (at 50°C)	200 watts (at 50°C)
+45° and -45° polarization horizontal beamwidth	71° (half-power)	65° (half-power)	60° (half-power)	62° (half-power)	64° (half-power)
+45° and -45° polarization vertical beamwidth	37° (half-power)	31° (half-power)	19° (half-power)	17.5° (half-power)	17.5° (half-power)
Cross polar ratio					
Main direction	0°	18 dB	25 dB	20 dB	22 dB
Sector (typical)	±60°	>8 dB	>8 dB	>9 dB	>9 dB
					25 dB
					>12 dB

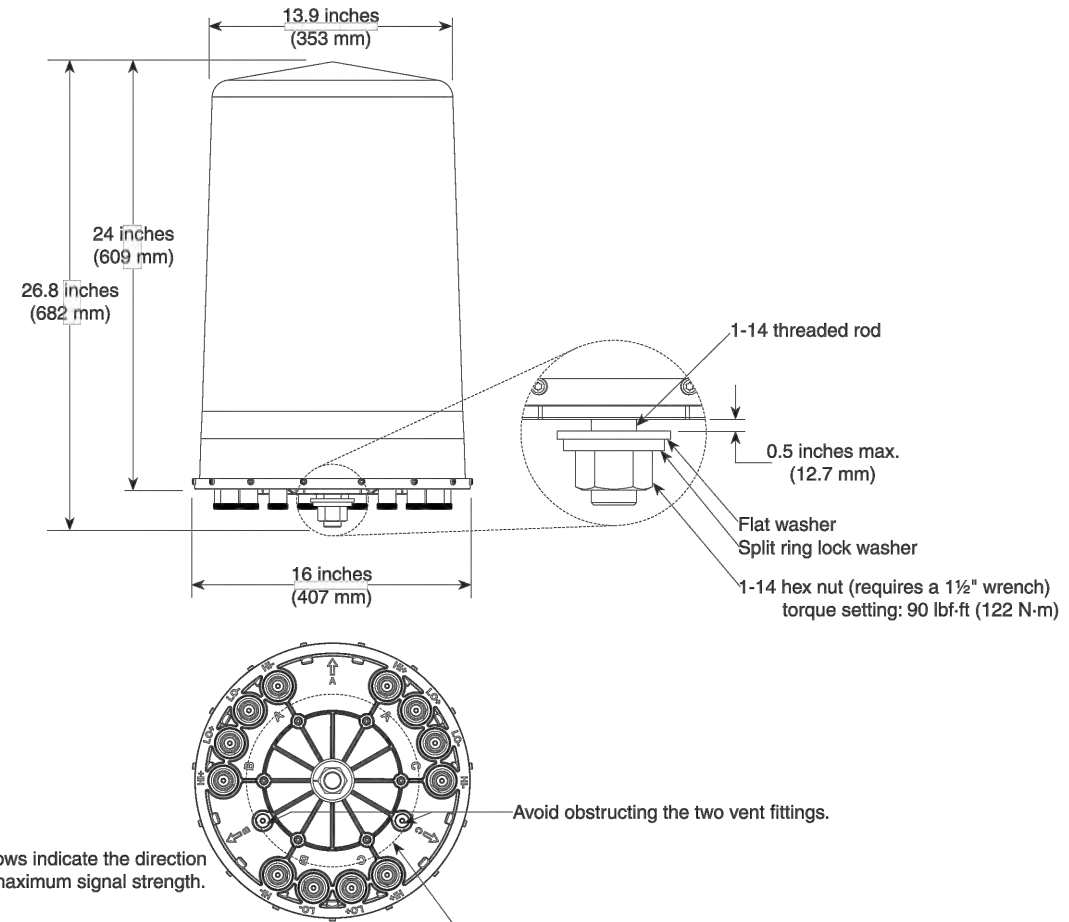


*Mechanical design is based on environmental conditions as stipulated in TIA-222-G-2 (December 2009) and/or ETS 300 019-1-4 which include the static mechanical load imposed on an antenna by wind at maximum velocity. See the Engineering Section of the catalog for further details.

Kathrein Inc., Scala Division Post Office Box 4580 Medford, OR 97501 (USA) Phone: (541) 779-6500 Fax: (541) 779-3991
Email: communications@kathrein.com Internet: www.kathrein-scala.com



840 10515 840 10516
65° Dual Band Tri-sector Antenna



Order Information:

Model	Description
840 10515	Brown Dualband 700 MHz X-pol Trisector Antenna
840 10516	Grey Dualband 700 MHz X-pol Trisector Antenna

All specifications are subject to change without notice. The latest specifications are available at www.kathrein-scala.com.
Kathrein Inc., Scala Division Post Office Box 4580 Medford, OR 97501 (USA) Phone: (541) 779-6500 Fax: (541) 779-3991
Email: communications@kathrein.com Internet: www.kathrein-scala.com

CHICAGO SMSA
limited partnership
d/b/a VERIZON WIRELESS



NO.	DESCRIPTION	DATE	BY	REVISIONS
A	ISSUED FOR REVIEW	03/25/16	LRB	
B	UPDATED WITH FIBER ROUTE	08/17/16	JJR	
0	ISSUED FOR FINALS	08/29/16	MPC	
1	REVISED EQUIPMENT LAYOUT	10/31/16	MPC	
2	RE-ISSUED FOR FINALS	11/01/16	MPC	
3	REVISED PAINT COLOR FOR EQUIPMENT	11/03/16	MPC	
4	ELEVATED EQUIPMENT LOCATIONS	01/03/16	MPC	

LOC #292337
LEMONT METRA SC
111 MAIN STREET
LEMONT, IL 60439

DRAWN BY:	JJR
CHECKED BY:	TAZ
DATE:	10/19/15
PROJECT #:	81-051

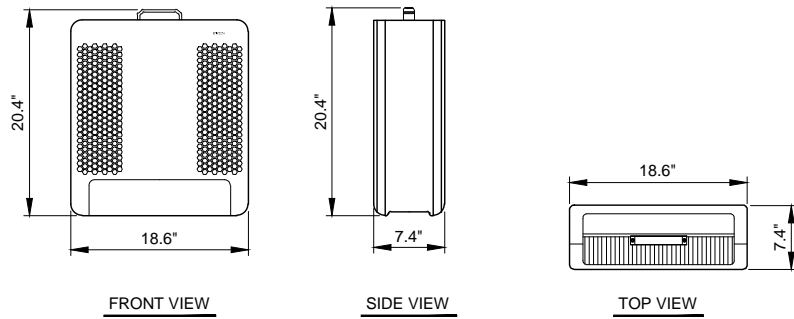
SHEET TITLE
ANTENNA DETAILS

SHEET NUMBER
ANT-4

NOTE:
REMOTE RADIO UNITS AND MOUNTING PARTS TO BE
PAINTED SHERWIN-WILLIAMS COLOR SW 7658 GRAY
CLOUDS, OR EQUIVALENT. PAINT TO HAVE MATTE FINISH.



RRUS12 B4 UNIT
WEIGHT = 58 POUNDS

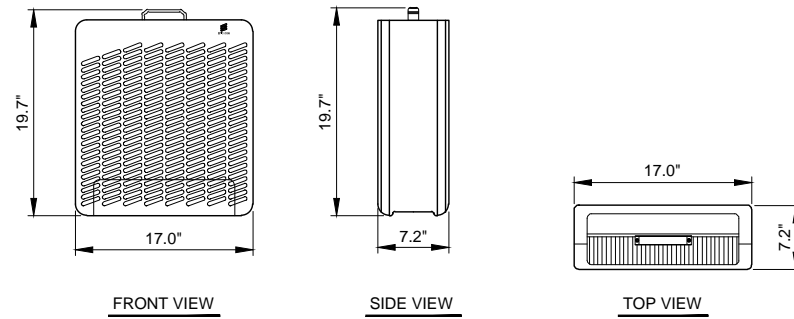


1 RRUS12 B4 INFORMATION
N.T.S.

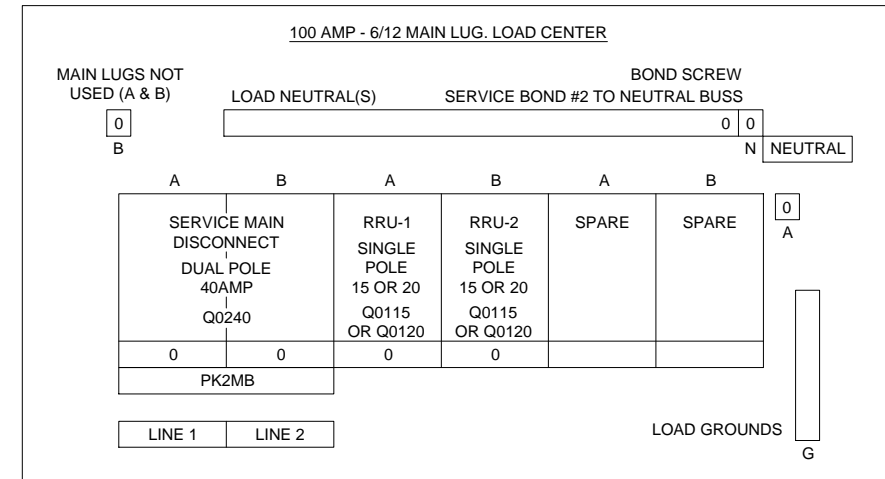
NOTE:
REMOTE RADIO UNITS AND MOUNTING PARTS TO BE
PAINTED SHERWIN-WILLIAMS COLOR SW 7658 GRAY
CLOUDS, OR EQUIVALENT. PAINT TO HAVE MATTE FINISH.



RRUS11 B13 UNIT
WEIGHT = 51 POUNDS

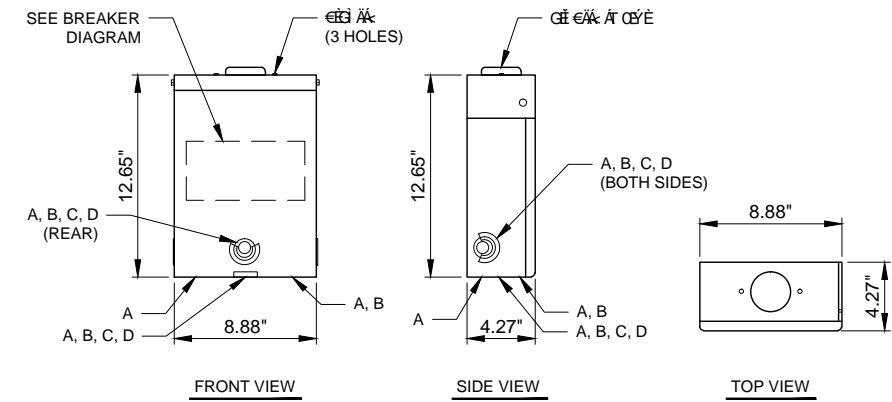


2 RRUS11 B13 INFORMATION
N.T.S.



BREAKER DIAGRAM

KNOCKOUTS				
SYMBOL	A	B	C	D
IN	0.50	0.75	1.00	1.25
MM	13.0	19.0	25.0	32.0



3 Q06-12L100RB DISCONNECT SPECS
N.T.S.

CHICAGO SMSA
limited partnership
d/b/a VERIZON WIRELESS



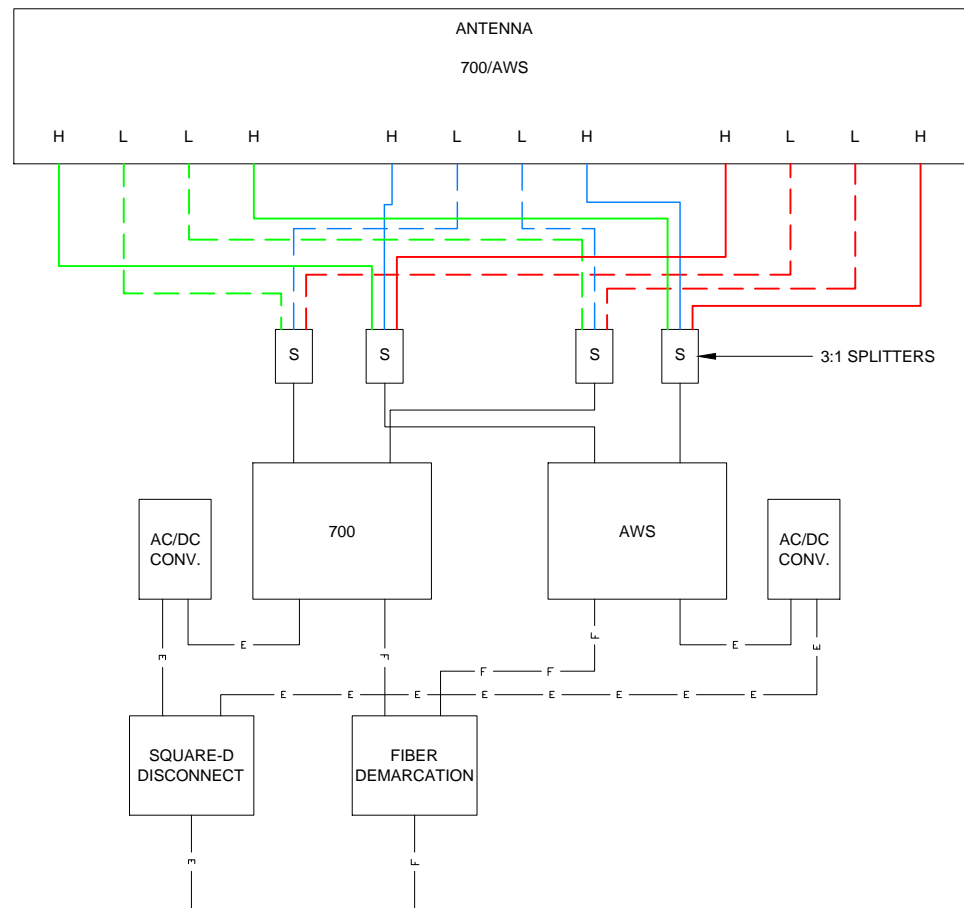
NO.	DESCRIPTION	DATE	BY			
			LRB	JJR	MPC	MPC
1	ISSUED FOR REVIEW	03/25/16				
2	UPDATED WITH FIBER ROUTE	08/17/16				
3	ISSUED FOR FINALS	08/29/16				
4	REVISED EQUIPMENT LAYOUT	10/31/16				
5	RE-ISSUED FOR FINALS	11/01/16				
6	REVISED PAINT COLOR FOR EQUIPMENT	11/03/16				
7	ELEVATED EQUIPMENT LOCATIONS	01/03/16				

LOC #292337
LEMONT METRA SC
111 MAIN STREET
LEMONT, IL 60439

DRAWN BY:	JJR
CHECKED BY:	TAZ
DATE:	10/19/15
PROJECT #:	81-051

SHEET TITLE
CABINET & RADIO DISCONNECT DETAILS

SHEET NUMBER
ANT-5



1 CABLE DIAGRAM
SCALE: N.T.S



AWS RRUS



LTE RRUS

3 EXAMPLE IDENTIFICATION PHOTOS
N.T.S.

SECTOR	ALPHA	ALPHA	ALPHA	ALPHA	BETA	BETA	BETA	BETA	GAMMA	GAMMA	GAMMA	GAMMA	LTE RRUS	LTE RRUS	AWS RRUS	AWS RRUS
TAG COLOR	GREEN	GREEN	GREEN	GREEN	BLUE	BLUE	BLUE	BLUE	RED	RED	RED	RED	BLACK	BLACK	BLACK	BLACK
TECHNOLOGY	LTE	LTE	AWS	AWS	LTE	LTE	AWS	AWS	LTE	LTE	AWS	AWS	LTE	LTE	AWS	AWS
LINE IDENTITY	RXTX0	RXTX1	RXTX0	RXTX1	RXTX0	RXTX1	RXTX0	RXTX1	RXTX0	RXTX1	RXTX0	RXTX1	RXTX0	RXTX1	RXTX0	RXTX1

2 LINE IDENTITY CHART
N.T.S.

CHICAGO SMSA
limited partnership
d/b/a VERIZON WIRELESS

TERRA
CONSULTING GROUP, LTD.
600 BUSSE HIGHWAY
PARK RIDGE, IL 60068
PH: 847-698-6400
FAX: 847-698-6401

NO.	DESCRIPTION	DATE	BY
A	ISSUED FOR REVIEW	03/25/16	LRB
B	UPDATED WITH FIBER ROUTE	08/17/16	JJR
0	ISSUED FOR FINALS	08/29/16	MPC
1	REVISED EQUIPMENT LAYOUT	10/31/16	MPC
2	RE-ISSUED FOR FINALS	11/01/16	MPC
3	REVISED PAINT COLOR FOR EQUIPMENT	11/03/16	MPC
4	ELEVATED EQUIPMENT LOCATIONS	01/03/16	MPC

LOC #292337
LEMONT METRA SC
111 MAIN STREET
LEMONT, IL 60439

DRAWN BY: JJR
CHECKED BY: TAZ
DATE: 10/19/15
PROJECT #: 81-051

SHEET TITLE
CABLE DIAGRAMS
AND INFORMATION

SHEET NUMBER
ANT-6

LEGEND

	Light Post		Found Section Corner Monument
	Utility Pole		Found or Set Monument
	Telephone Pedestal		Found or Set Cut Cross
	Fence	59.75'	Measured
	Railroad Tracks	(60.00')	Record
	Centerline	DOC. NO.	Document Number
	Section Line	A & U	Access & Utility
	Building	AGL	Above Ground Level
POC	POINT OF COMMENCEMENT		
POB	POINT OF BEGINNING		

LOCATION MAP

NOT TO SCALE

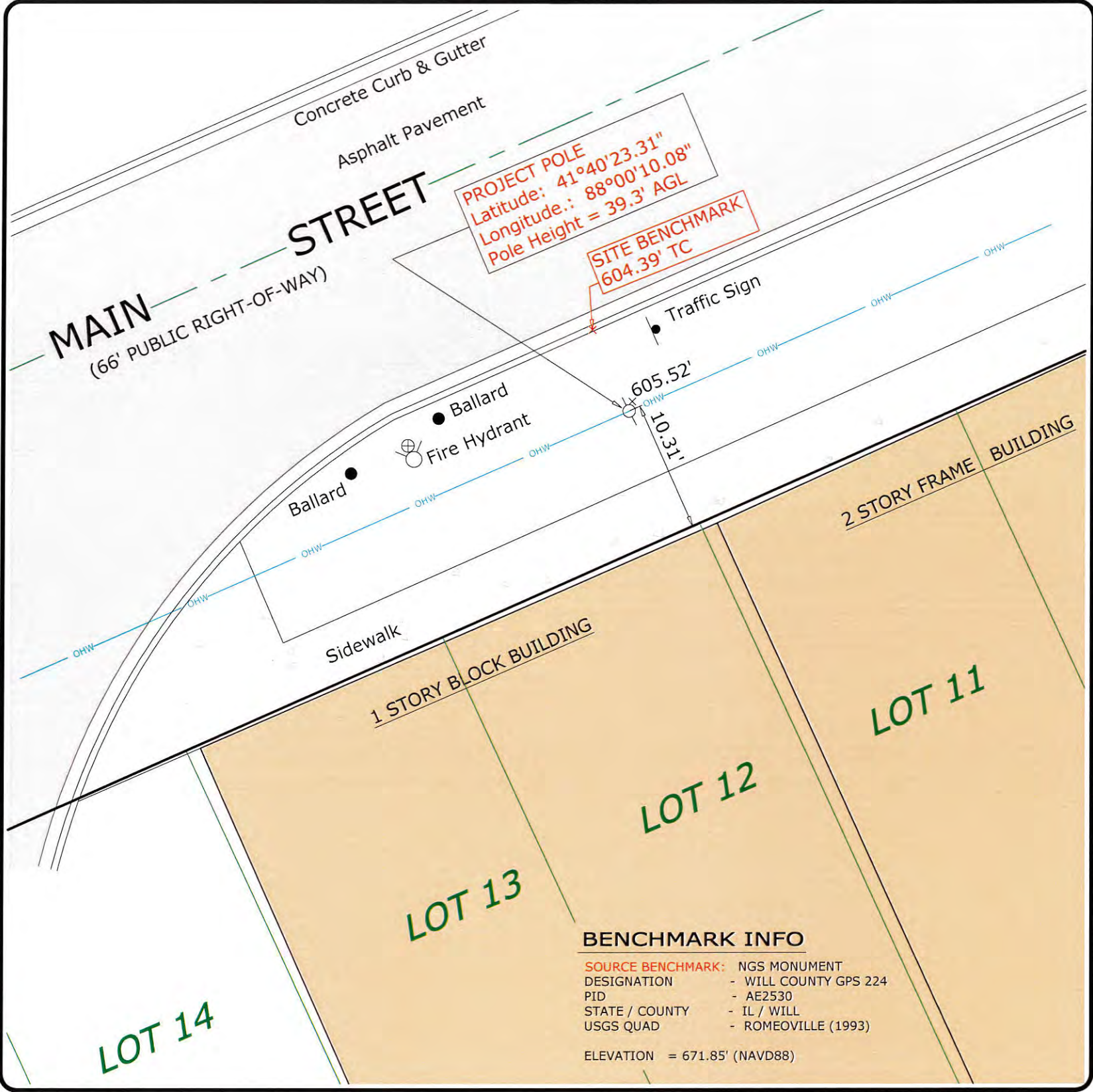
SURVEY NOTES

EASEMENTS AND SETBACKS SHOWN HEREON ARE BASED UPON THE RECORDED SUBDIVISION PLAT UNLESS NOTED OTHERWISE.

THE SURVEYOR EXPRESSES NO OPINION AS TO THE ACCURACY OF ANY UNDERGROUND UTILITIES WHEN NOT READILY VISIBLE FROM THE SURFACE. IT IS RECOMMENDED THAT THE APPROPRIATE GOVERNMENTAL AGENCY, MUNICIPALITY AND/OR UTILITY COMPANY BE CONTACTED FOR VERIFICATION.

THE PERMANENT PARCEL INDEX NUMBER FOR THE PROPERTY ADJACENT TO THE PROJECT UTILITY POLE SHOWN HEREON IS 22-20-311-032.

A CURRENT TITLE REPORT WAS NOT FURNISHED TO US FOR OUR USE IN PREPARING THIS SURVEY. THEREFORE THERE MAY BE ADDITIONAL EASEMENTS AND/OR SERVITUDES EFFECTING THIS PROPERTY WHICH ARE NOT SHOWN ON THIS SURVEY.



BASIS OF BEARING

BEARINGS SHOWN HEREON ARE BASED ON ILLINOIS STATE PLANE, EAST ZONE, NAD83 (2011)

MEAN MAGNETIC DECLINATION OBTAINED FROM U.S.G.S. 7 1/2 MINUTE SERIES MAP ROMEOVILLE QUADRANGLE STATE OF ILLINOIS

LATITUDE: N 41° 40' 23.31"
LONGITUDE: W 088° 00' 10.08"

AT CENTERLINE OF PROJECT UTILITY POLE COMPLIES WITH F.A.A. 1/A ACCURACY REQUIREMENTS

SCALE: 1" = 10'

11" X 17" PRINT IS THE FULL SCALE FORMAT OF THIS SURVEY. ANY OTHER SIZE IS AT AN ADJUSTED SCALE.

LEGAL DESCRIPTION

A PART OF MAIN STREET IN THE VILLAGE OF LEMONT LYING ADJACENT TO LOTS 11 AND 12 IN BLOCK 4 IN THE VILLAGE OF LEMONT SUBDIVISION BEING A SUBDIVISION OF PART OF THE SOUTH HALF OF SECTION 20, TOWNSHIP 37 NORTH, RANGE 11 EAST OF THE THIRD PRINCIPAL MERIDIAN, ACCORDING TO THE PLAT THEREOF RECORDED AUGUST 8, 1874 AS DOCUMENT #184242 IN COOK COUNTY, ILLINOIS.

SURVEYOR'S CERTIFICATE

STATE OF ILLINOIS }
COUNTY OF KANE } SS

I, CHARLES S. MARSHALL, AN ILLINOIS PROFESSIONAL LAND SURVEYOR, DO HEREBY CERTIFY THAT THE PLAT SHOWN HEREON, BEING COMPLETED IN THE FIELD ON 2/29/2016 IS A CORRECT REPRESENTATION OF A SURVEY PERFORMED AT AND UNDER MY DIRECTION.

THIS SURVEY MEETS THE MINIMUM TECHNICAL STANDARDS FOR LAND BOUNDARY SURVEYS SET FORTH BY ILLINOIS STATE LAW.

ALL DIMENSIONS ARE IN FEET AND DECIMAL PARTS THEREOF.

GIVEN UNDER MY HAND AND SEAL THIS 2ND DAY OF MARCH, A.D. 2016.

CHARLES S. MARSHALL
ILLINOIS PROFESSIONAL LAND SURVEYOR NO. 035-3377
LICENSE EXPIRES 11/30/2016

NO.	DATE	REVISION
1.	2/29/2016	FIELD SURVEY COMPLETED
2.	3/2/2016	FINAL SURVEY COMPLETED
3.		



PREPARED BY:

ASM Consultants, Inc.
16 E Wilson St, Batavia IL 60510
Tel (630) 879-0200 Fax (630) 454-3774
advanced@advct.com
Professional Design Firm #184-006014 expires 4/30/2017

SMALL CELL - SITE SURVEY

PREPARED FOR:

CHICAGO SMSA LIMITED PARTNERSHIP
d/b/a VERIZON WIRELESS
1515 WOODFIELD ROAD, SUITE 1400
SCHAUMBURG, ILLINOIS 60173
PHONE: 847-819-5397 FAX: 847-706-7415

Consulting Group, LTD.
600 Busse Highway
Park Ridge, IL 60068
(847) 698-6400
JOB No.: 81-051

SITE DESIGNATION INFORMATION:

LEMONT METRA SC
292337
111 MAIN STREET
LEMONT, IL 60439

DRAWN BY: LR
CHECKED BY: CSM

PROJECT NO.
720447

L-1

38.95 Ft. Tall
Top Dia. = 10.97 in.
Bottom Dia. = 17.4 in.

10 Ft. Cross Arm
38.95 Ft. Elev.

30.16 Ft. Elev.

21.13 Ft. Elev.



St. Patrick Church

ADA RAMP

200 E Illinois St., Lemont, IL 60439

1 NOVEMBER 2016

PERMIT/BID

CLIENT
St. Patrick Church
200 E. Illinois St.
Lemont, IL 60439
630.257.6134

ARCHITECT
Domenella Architects
2000 N. Racine, Suite 2290
Chicago, IL 60614
773.528.2191

OWNER
Catholic Bishop of Chicago
835 N. Rush St.
Chicago, IL 60611
312.534.8200

STRUCTURAL ENGINEER
Larson Engineering
1488 Bond St. #100
Naperville, IL 60563
630.357.0540

GENERAL NOTES

- A. GENERAL**
- THE CONTRACTOR SHALL VISIT THE SITE AND BE KNOWLEDGEABLE OF CONDITIONS THEREON. HE SHALL INVESTIGATE, VERIFY, AND BE RESPONSIBLE FOR ALL CONDITIONS REQUIRING MODIFICATIONS BEFORE PROCEEDING WITH THE WORK.
 - ACTIVE UNDERGROUND PIPES, CONDUITS, OR OTHER UTILITIES OF ANY TYPE WHETHER INDICATED ON THE DRAWINGS OR NOT MUST BE PROTECTED BY THE CONTRACTOR DURING THE COURSE OF THE WORK.
 - NOTIFY OWNER'S REPRESENTATIVE 72 HOURS IN ADVANCE OF INTERRUPTING ANY UTILITY.
 - NO WORK SHALL BE INSTALLED UNTIL COMPLETE SUBMITTALS FOR THE RESPECTIVE COMPONENTS HAVE BEEN REVIEWED BY THE ARCHITECT.
 - ALL SUB-CONTRACTORS SHALL COORDINATE THEIR WORK WITH OTHERS PRIOR TO COMMENCING THEIR WORK.
- B. FIRE RESISTANCE RATING**
- BUILDING IS UNSPRINKLERED.
 - FIRE RESISTIVE (LABELED) DOORS SHALL HAVE THE APPROPRIATE UL LABEL AFFIXED TO BOTH DOOR AND FRAME.
 - THE FLAME SPREAD RATINGS FOR MATERIALS SHALL CONFORM TO APPLICABLE CODES AND REGULATORS.
- C. ACCESSIBILITY**
- ACCESSIBLE CONTROLS, OPERATING MECHANISMS & HARDWARE SHALL COMPLY WITH ILLINOIS ACCESSIBILITY CODE.
 - SIGNAGE REQUIRED TO BE ACCESSIBLE SHALL COMPLY WITH ILLINOIS ACCESSIBILITY CODE.
 - PROJECT HAS FULL ACCESSIBLE MAIN ENTRY. PROJECT HAS FULLY ACCESSIBLE ROUTE FROM MAIN ENTRY TO HI-LOW DRINKING FOUNTAINS.
 - ACCESSIBLE MENS AND WOMENS TOILET ROOMS ARE LOCATED IN 2002 BUILDING ADDITION.
 - ALL MODIFICATIONS TO COMPLY WITH CITY OF CHICAGO BUILDING CODE CHAPTER 18-11 AND ICC/ANSI A117.1-2003.
- D. DIMENSIONING**
- ALL DIMENSIONS INDICATE WALL THICKNESS AT 5'-0" A.F.F. VERIFY WALL THICKNESSES WITH SECTIONS.
 - INTERIOR PARTITIONS ARE DIMENSIONED TO THE FINISHED FACE OF THE WALL UNLESS OTHERWISE NOTED.
 - DO NOT SCALE DRAWINGS DIMENSIONS SHALL HAVE PREFERENCE OVER SCALE.
 - EXTERIOR PARTITIONS ARE DIMENSIONED TO MASONRY OPENINGS.
 - DIMENSIONS AND ELEVATIONS SHALL BE VERIFIED IN FIELD BEFORE PROCEEDING WITH THE WORK. NOTIFY THE ARCHITECT OF ANY DISCREPANCIES
 - DOOR AND WINDOW OPENINGS ARE GENERALLY DIMENSIONED TO CENTER OF OPENING. DOOR OPENINGS THAT ARE NOT DIMENSIONALLY LOCATED ARE TO BE CENTERED BETWEEN THE WALLS OR POSITIONED WITH ONE JAMB AGAINST AN ADJACENT WALL OR COLUMN AS SHOWN ON PLANS AND / OR DETERMINED FROM DETAILS.
 - WHEN UNDIMENSIONED PARTITIONS APPEAR IN CONJUNCTION WITH DOOR OPENINGS, THE DOOR WIDTH AND DOOR FRAME DETAILS DETERMINE THE LOCATION OF ADJACENT WALLS.
- E. MISCELLANEOUS NOTES**
- APPLY COMPATIBLE SEALANT / CAULKING BETWEEN DISSIMILAR MATERIALS.
 - REFER TO PLUMBING DRAWINGS FOR LOCATIONS OF FLOOR DRAINS.
 - GENERAL CONTRACTOR SHALL COORDINATE MECHANICAL AND ELECTRICAL FLOOR AND FOUNDATION WALL SLEEVES AND ALL MECHANICAL SHAFTS WITH MECHANICAL, PLUMBING, FIRE PROTECTION, ELECTRICAL, AND ARCHITECTURAL DRAWINGS.
 - REFER TO SPECIFICATIONS FOR ADDITIONAL REQUIREMENTS.

INDEX OF DRAWINGS / SEALS

GENERAL	
G1.0	General Sheet
ARCHITECTURAL	
A1.1	First Floor & Demo Plan
A3.1	Exterior Elevations & Details
A6.1	Details

APPLICABLE MUNICIPAL CODES

BUILDING CODE:	2006 International Building Code (Industrial, Commercial Multi-Family)
MECHANICAL:	2006 International Mechanical Code
ELECTRICAL:	2005 National Electric Code
PLUMBING:	2014 Illinois Plumbing Code
FIRE PREVENTION:	2006 International Fire Code (Industrial, Commercial & Multi-Family)
MAINTENANCE:	2006 International Property Maintenance Code
ENERGY:	2015 Illinois (International) Energy Conservation Code
ACCESSIBILITY:	1997 ILLINOIS ACCESSIBILITY CODE
LIFE SAFETY:	2013 NFPA 13, 2013 NFPA 72, 2013 NFPA 17A, 2011 NFPA 96

PROJECT DATA

PARKING SPACES:					
	STANDARD	=	CODE REQ.	EXISTING	PROPOSED
	ADA	=	3	46	46
				5	3
ZONING CLASSIFICATION:	DOWNTOWN DISTRICT				
OCCUPANCY CLASSIFICATION:	USE GROUP A-3				
PRINCIPLE FRAMING:	MASONRY (WALL BEARING)				
CONSTRUCTION TYPE	3B				

SITE LOCATION NTS



ZONING PLAN



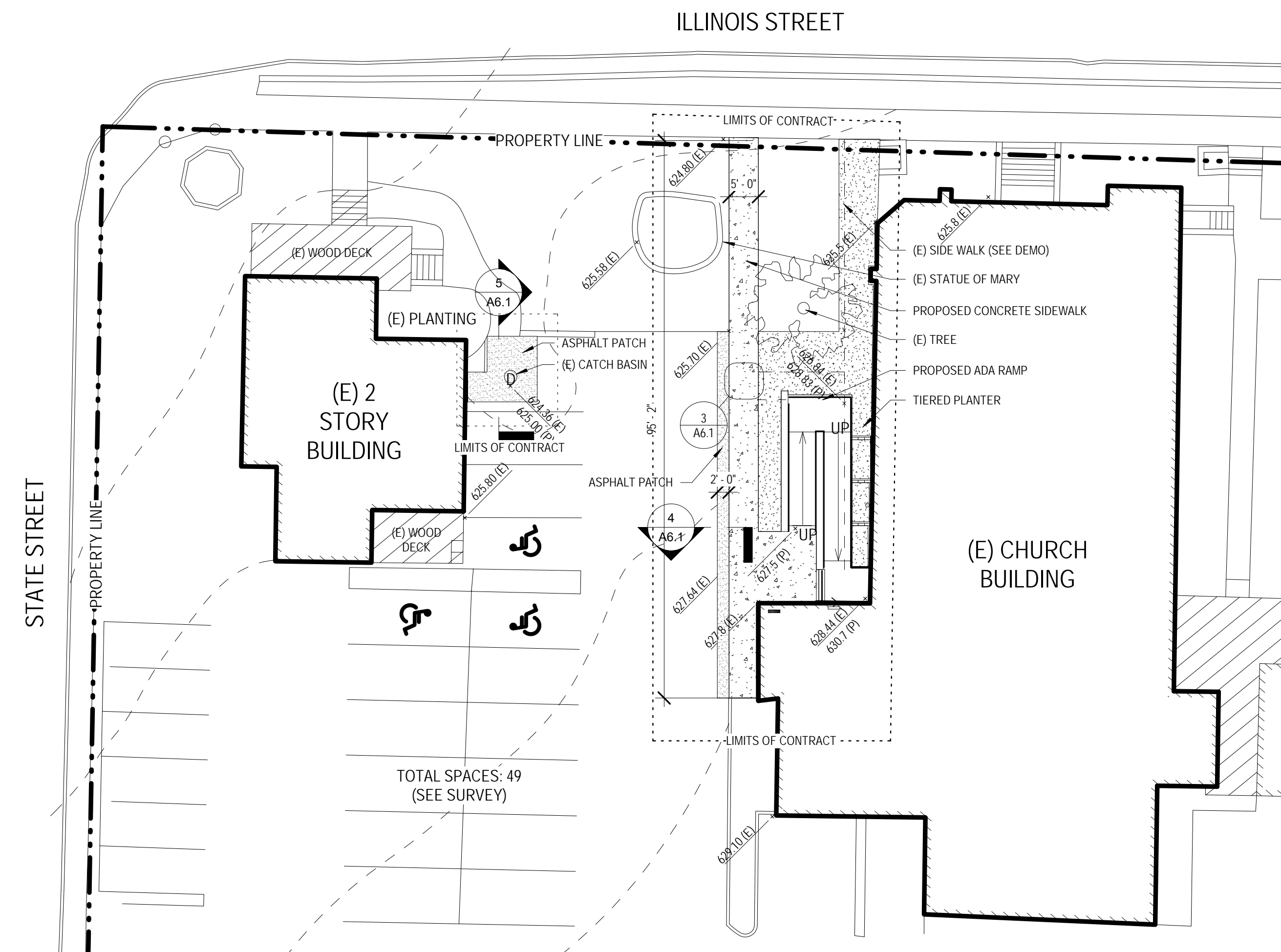
DRAFTING SYMBOLS

DETAIL TAG		COMPACTED TOPSOIL	
CENTER LINE		UNDISTURBED EARTH	
BUILDING SECTION TAG		SELF COMPACTED FILL	
DOOR TAG		POROUS GRANULAR FILL	
COLUMN CENTER LINE		CONCRETE	
ELEVATION MARK		CONCRETE MASONRY UNIT	
ROOM TAG		CONCRETE MASONRY UNIT GROUTED SOLID	
WALL TYPE TAG		BRICK MASONRY	
EQUIPMENT TAG		DRYWALL PARTITION	
WINDOW TAG		FERROUS MATERIAL	
EXTERIOR ELEVATION TAG		NON-FERROUS MATERIAL	
MULTIPLE INTERIOR ELEVATION TAG		CONTINUOUS WOOD BLOCKING	
KEYNOTE TAG		DISCONTINUOUS WOOD BLOCKING	
BITUMINOUS DAMPPROOFING		WOOD TRIM	
VAPOR DIFFUSION RETARDER		PLYWOOD	
		BATT INSULATION	

ABBREVIATIONS

&	AND	FE	FIRE EXTINGUISHER	OFF	OFFICE
<	ANGLE	FIN	FINISH	OPNG	OPENING
@	AT	FIN FL	FINISH FLOOR	OPP	OPPOSITE
A	DIAMETER OR ROUND	FL	FLOOR	P LAM	PLASTIC LAMINATE
ACT	ACTUAL	FLUOR	FLUORESCENT	PL	PLATE
AFF	ABOVE FINISH FLOOR	FT	FEET	PLAS	PLASTER
ALT	ALTERNATE	FTG	FIRE EXTINGUISHER CABINET	PLUMB	PLUMBING
ALUM	ALUMINUM	PREFAB	PREFABRICATED	PVC	POLYVINYL CHLORIDE
APPROX.	APPROXIMATE	FTG	FOOTING	QTY	QUANTITY
ARCH	ARCHITECTURAL	GA	GAUGE	R	RADIUS
BLDG	BUILDING	GALV	GALVANIZED	R	RISER
BLGK	BLOCKING	GC	GENERAL CONTRACTOR	R	R VALUE
BM	BEAM	GEN	GENERAL	RD	ROOF DRAIN
BRD	BOARD	GI	GALVANIZED IRON	REINF	REINFORCING
BRG	BEARING	GYP	GYP SUM	REQD	REQUIRED
BSMT	BASEMENT	GYP BD	GYP SUM BOARD	REV	REVISION
BTM	BOTTOM	HC	HOLLOW CORE	RO	ROUGH OPENING
CJ	CONTROL JOINT	HD	HEAD	SC	SOLID CORE
CL	CENTERLINE	HDWD	HARDWARE	SCHED	SCHEDULE
CLG	CEILING	HGT	HEIGHT	SF	SQUARE FEET (FOOT)
CMU	CONCRETE MASONRY UNIT	HM	HOLLOW METAL	SHT	SHEET
COL	COLUMN	HORIZ	HORIZONTAL	SIM	SIMILAR
CONC	CONCRETE	HP	HIGH POINT	SQ	SQUARE
CONTR	CONTRACTOR	HP	HIGH POINT	STL	STEEL
DBL	DOUBLE	ID	INSIDE DIAMETER	STRUCT	STRUCTURAL
DET	DETAIL	INCL	INCLUDED	SUSP	SUSPENDED
DF	DRINKING FOUNTAIN	INSUL	INSULATION	T	TREAD
DIA	DIAMETER	INT	INTERIOR	T/	TOP OF
DIM	DIMENSION	JNT	JOINT	TYP	TYPICAL
DISP	DISPENSER	LAM	LAMINATE	UNO	UNLESS OTHERWISE NOTED
DN	DOWN	LP	LOW POINT	VCT	VINYL COMPOSITION TILE
DR	DOOR	MAS	MASONRY	VERT	VERTICAL
DS	DOWNSPOUT	MATL	MATERIAL	W/	WITH
DWG	DRAWING	MAX	MAXIMUM	W/O	WITHOUT
EA	EACH	MECH	MECHANICAL	WC	WATER CLOSET
EC	EXPOSED CONSTRUCTION	MFR	MANUFACTURER	WD	WOOD
EJ	EXPANSION JOINT	MIN	MINIMUM	WGT	WEIGHT
EL	ELEVATION	MISC	MISCELLANEOUS	YD	YARD
ELECT	ELECTRICAL	MO	MASONRY OPENING		
EQ	EQUAL	MTD	MOUNTED		
EQUIP	EQUIPMENT	MTL	METAL		
EWC	ELECTRICAL WATER COOLER	NIC	NOT IN CONTRACT		
EXT	EXTERIOR	NO OR #	NUMBER		
FD	FLOOR DRAIN	NOM	NOMINAL		
FDN	FOUNDATION	OA	OVERALL		
		OC	ON CENTER		
		OD	OUTSIDE DIAMETER		

PARTIAL SITE PLAN 1" = 20'-0"



Date	Description
Rev. No.	

"I HEREBY CERTIFY THAT THESE PLANS WERE PREPARED BY OR UNDER MY DIRECT SUPERVISION AND TO THE BEST OF MY PROFESSIONAL KNOWLEDGE, THEY CONFORM TO THE INTERNATIONAL BUILDING CODE."



Issue: PERMIT/BID Date: 1 NOVEMBER 2016
 St. Patrick Church
 200 E Illinois St.,
 Lemont, IL 60439
 Project Number: 2011.20.02
 Checked By: Author
 Drawn By: Author

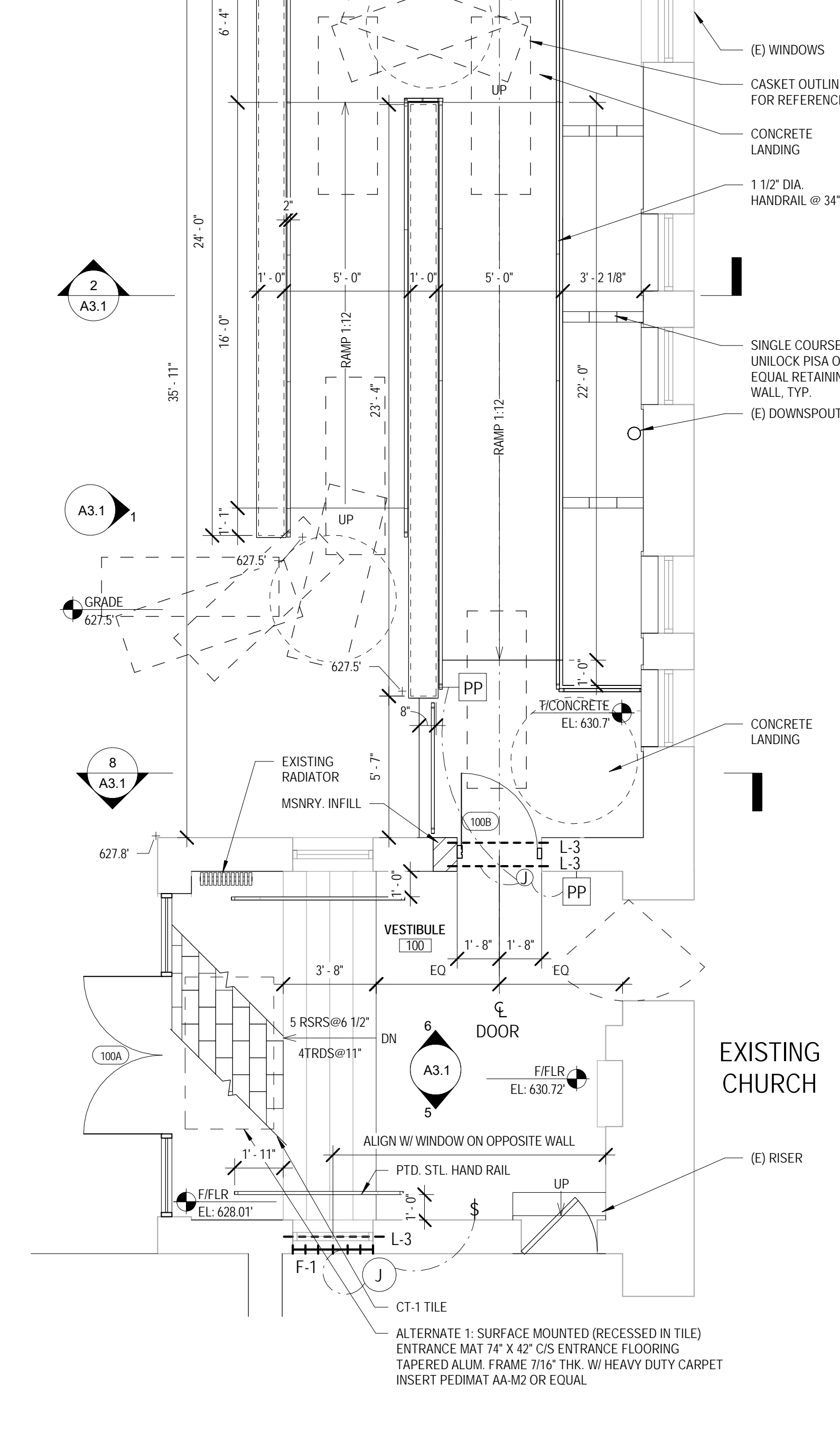
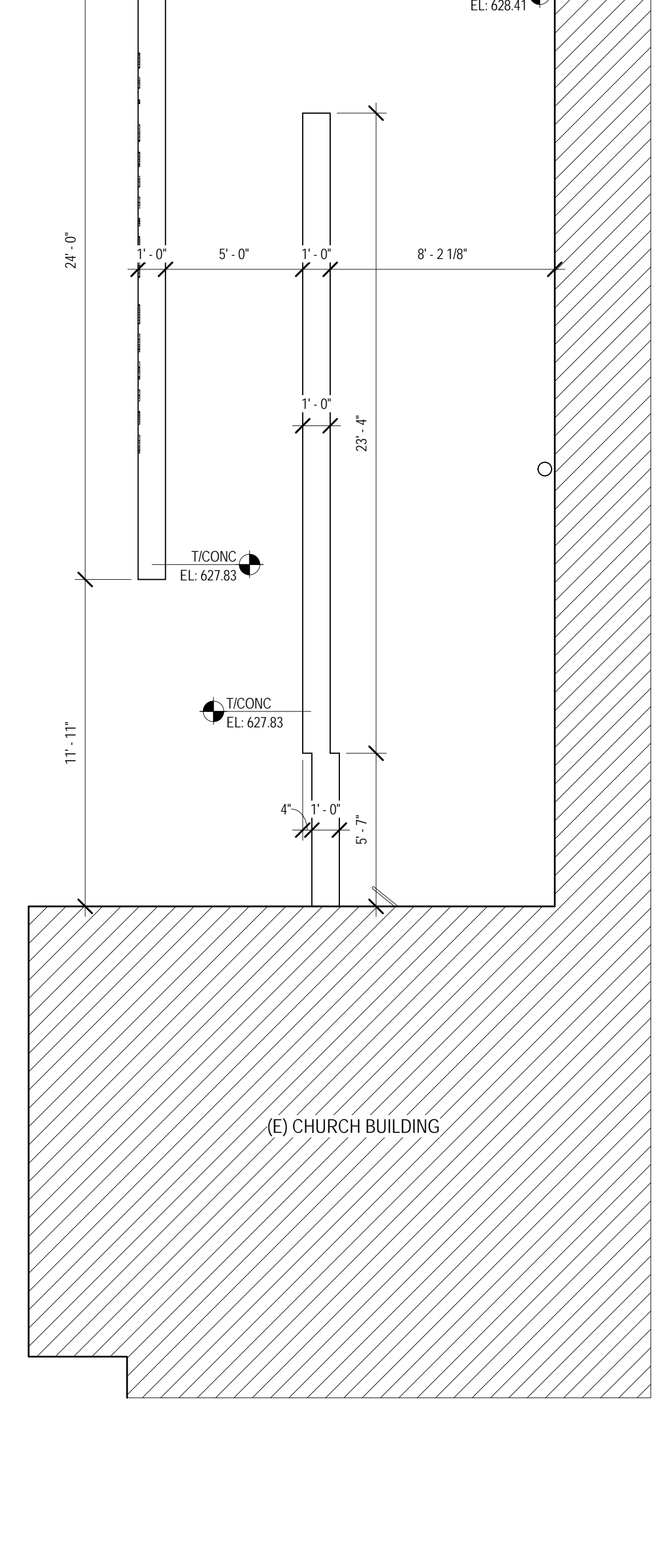
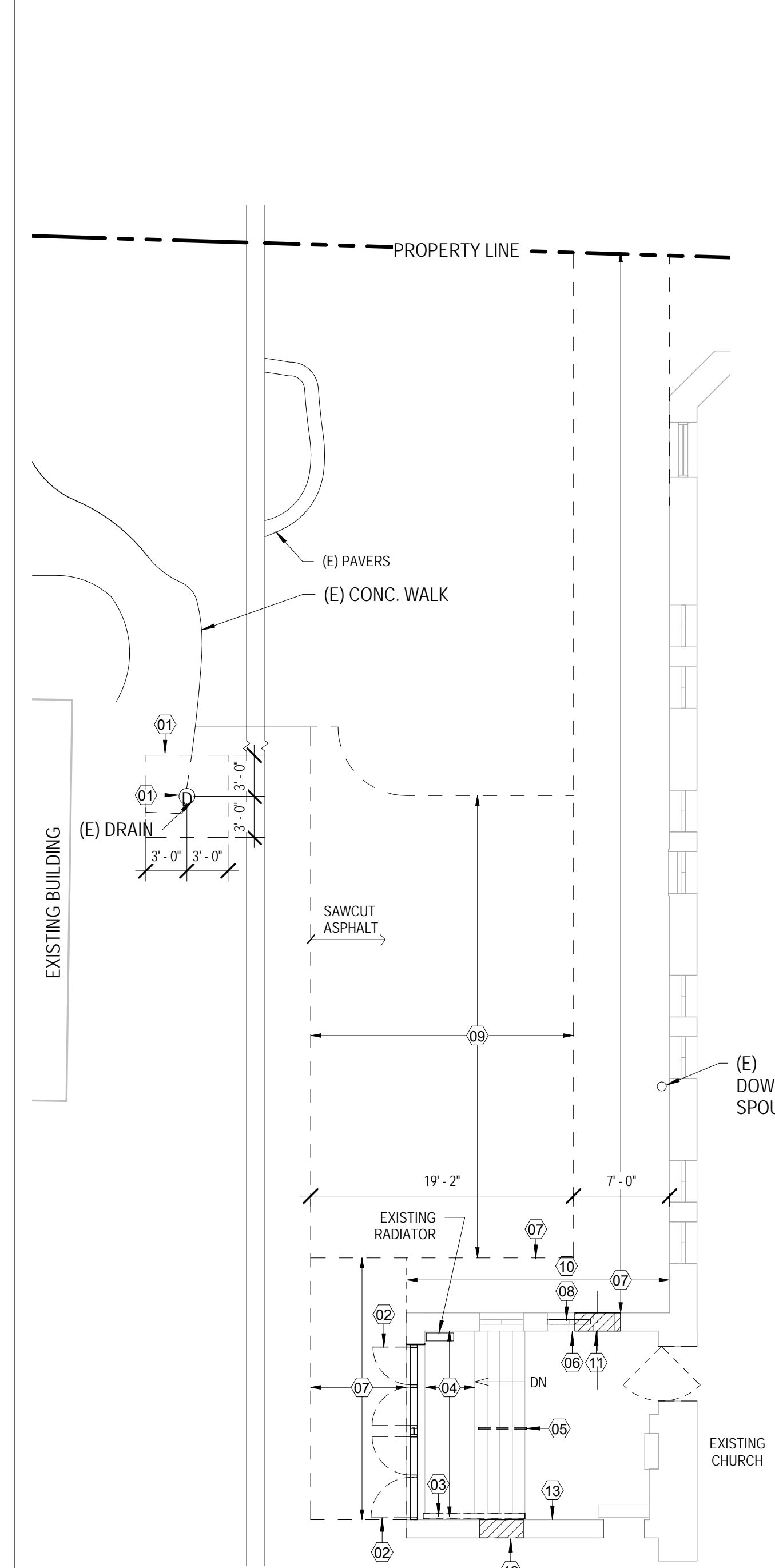
General Sheet

G1.0

Room Number	Room Name	Mark	Door/Frame Type	DOOR SCHEDULE										HARDWARE SCHEDULE																
				Nominal Door Size			Details							UL	Remarks	Mark	Key No	Hinges	Lockset/Latchset/Exit Device	Door Closer	Kick plate	Push/Pull	Flush bolt	Weather stripping Head/Jamb	Threshold	Stops-Floor/Wall	Electric Strike	Astragal	Automatic Operator	HDWR Remarks
				W	H	Thickness	Door Material	Door Finish	Frame Material	Frame Finish	Head	Jamb	Sill																	
100	Vestibule	100A	FG 1/1	3' - 0"	7' - 0"	1 3/4"	AL/GL	AN	AL	AN	2/A6.1	7/A6.1	6/A6.1	--		100A		H-1	(2) L-8	(2) C-1		PP-1		W-1	T-1	--	--	--	--	
100	Vestibule	100B	FG 1/1	(2) 3' - 0"	7' - 0"	1 3/4"	AL/GL	AN	AL	AN	1/A6.1	7/A6.1	6/A6.1	--		100B		H-2	L-7	C-1		PP-1		W-1	T-1	--	--	--	A0-1	

FINISH SCHEDULE												
Number	Name	Floor	Base	Walls				Ceiling	Unbounded Height	Remarks	Number	
				North	East	South	West					
100	VESTIBULE	CT-1	B-1	P-1	P-1	P-1	P-1	(E) ACT	8' - 11"			

DOOR TYPES		FRAME TYPES		KEY NOTES	
	FG-1 ALUMINUM GLASS		ALUM. FRAME	01	DEMOLISH AND REMOVE EXISTING LID, FRAME, CATCH BASIN, AND SECTION OF ASPHALT AND CONCRETE PAVING INDICATED. PREPARE FOR INSTALLATION OF CATCH BASIN, CONNECT TO EXISTING STORM LINE. SEAL PENETRATION BACKFILL, COMPACT AND PREPARE FOR INSTALLATION OF BITUMINUS PAVING AS INDICATED ON SITE PLAN.
				02	DEMOLISH AND REMOVE EXISTING ALUMINUM DOORS, FRAME AND HARDWARE. CLEAN, PRIME, AND PAINT LINTEL PATCH AND REPAIR MASONRY JAMBS. PREPARE ADJACENT CONSTRUCTION FOR INSTALLATION IN ACCORDANCE WITH ARCHITECTURAL DRAWINGS.
				03	DISCONNECT, DEMOLISH AND REMOVE EXISTING CHAIR LIFT, WALL BRACKET, FLOOR MOUNTS AND ALL ASSOCIATED ANCHORS. DEMOLISH AND REMOVE CONTROL DEVICES, JUNCTION BOXES, CONDUIT, AND WIRING BACK TO SOURCE. PATCH AND REPAIR CONCRETE FLOOR AND PLASTER WALL SURFACE TO ALIGN WITH ADJACENT SURFACES AND MATCH EXISTING. PREPARE FOR PRIMING AND PAINTING IN ACCORDANCE WITH ARCHITECTURAL DRAWINGS.
				04	DEMOLISH AND REMOVE EXISTING CERAMIC QUARRY TILE IN AREAS INDICATED. PATCH AND REPAIR EXISTING CONCRETE SUBFLOOR FOR FINISH IN ACCORDANCE WITH FINISH SCHEDULE.
				05	DEMOLISH AND REMOVE EXISTING HANDRAILS, WHERE HANDRAILS ARE LOCATED ON CONCRETE STAIRS DO NOT CHIP, CORE OR OTHERWISE DAMAGE MATERIAL. COORDINATE CORES IN STAIRS WITH PROPOSED RAILING LOCATIONS IN ARCHITECTURAL DRAWINGS.
				06	DEMOLISH AND REMOVE SECTION OF METAL/ WOOD FURRING, PLASTER/GYPSUM BOARD, AND SECTION OF WOOD BASE. PREPARE FOR INSTALLATION OF ALUMINUM DOOR IN ACCORDANCE WITH ARCHITECTURAL DRAWINGS.
				07	SAW CUT AND REMOVE EXISTING CONCRETE SIDEWALK AND 6" OF SUB-BASE INDICATED. INSPECT SUB-BASE AND PREPARE FOR INSTALLATION OF COMPACTED FILL AND CONCRETE SIDEWALK IN ACCORDANCE WITH ARCHITECTURAL DRAWINGS.
				08	REMOVE & SALVAGE EXISTING WOOD FRAME WINDOW W/ SINGLE GLAZING. PREPARE FOR INSTALLATION OF MASONRY INFILL. COORDINATE WORK IN THIS AREA WITH OTHER, ADJACENT DEMOLITION AND CONSTRUCTION.
				09	SAW CUT AND REMOVE SECTION OF ASPHALT PAVING AND 1'-0" OF BASE INDICATED FOR PROPOSED EXCAVATION. PREPARE FOR BACKFILL, COMPACT AND PATCHING IN ACCORDANCE WITH ARCHITECTURAL DRAWINGS.
				10	REMOVE AND SALVAGE EXISTING STAINED GLASS WINDOW FROM OPENING. STORE ON SITE AND PROTECT FROM ANY AND ALL DAMAGE DURING CONSTRUCTION ACTIVITY. PREPARE FOR INSTALLATION INTO LIGHT BOX OPENING IN ACCORDANCE WITH ARCH. DRAWINGS.
				11	SAW CUT AND REMOVE SECTION OF MASONRY WALL CONSISTING OF SPLIT FACE Limestone AND MASONRY BACKUP. DEMOLISH AND REMOVE EXISTING LIMESTONE SILL AND PAINTED ARCH. PREPARE TO TOOTH IN MASONRY TO ALIGN WITH ADJACENT COURSING AND INSTALLATION OF LINTEL AND CONTINUOUS SELF RUBBERIZED ASPHALT SHEET FLASHING IN ACCORDANCE WITH ARCHITECTURAL DRAWINGS.
				12	DEMOLISH AND REMOVE SECTION OF PLASTER/ GYPSUM BOARD WALL FURRING, SAW CUT, AND REMOVE MASONRY BACKUP. PREPARE FOR INSTALLATION OF EXISTING WINDOW FRAME W/ STAINED GLASS AND GYP RETURN IN ACCORDANCE WITH ARCHITECTURAL DRAWINGS.
				13	DEMOLISH AND REMOVE EXISTING BULLETIN BOARD AND ALL ASSOCIATED FASTENERS. PATCH AND REPAIR WALL TO ALIGN SURFACES AND MATCH EXISTING. PREPARE FOR PAINT IN ACCORDANCE WITH ARCHITECTURAL DRAWINGS.



3 Demo Plan
1/8" = 1'-0"

2 Foundation Plan
1/4" = 1'-0"

1 Partial Plan
1/4" = 1'-0"

SHEET NOTES

- PROVIDE DEMOLITION AS REQUIRED TO MEET EXISTING CONSTRUCTION.
- ALL CONSTRUCTION TO REMAIN WHICH IS AFFECTED BY DEMOLITION SHALL BE PATCHED, PROPERLY ALIGNED, MEMBERED, AND FINISHED SO AS TO LEAVE NO EVIDENCE OF PATCHING OR REPAIR.
- IT IS THE CONTRACTOR'S RESPONSIBILITY TO COORDINATE DEMOLITION OF ELECTRICAL, MECHANICAL, PLUMBING, ETC. TO AVOID DISRUPTION TO ADJACENT AREAS OR FLOORS. COORDINATE SCHEDULE WITH OWNER.

HARDWARE NOTES

- ALL MEANS OF EGRESS DOORS SHALL BE OPERABLE IN THE DIRECTION OF EGRESS WITHOUT THE USE OF A KEY OR SPECIAL KNOWLEDGE.
- REFER TO ROOM FINISH SCHEDULE FOR PAINT COLORS.
- ALL DOOR CLOSERS MINIMUM 3 SECONDS TO STAY OPEN.
- WOOD DOORS TO RECEIVE TRANSPARENT SATIN FINISH COLOR TO MATCH ARCH SAMPLE.
- FINISH OF ALL HARDWARE ITEMS SHALL BE BHMA 613US108 UNLESS OTHERWISE NOTED.
- EXIT DEVICES AT WOOD AND HOLLOW METAL DOORS SHALL MATCH DEVICES PROVIDED BY ALUMINUM DOOR MANUFACTURER.
- ALL INTERIOR DOORS AND FRAMES TO BE PAINTED SHALL BE PAINTED ON BOTH SIDES. COLOR TO MATCH ARCHITECTS SAMPLE.
- COORDINATE ALL KEYING REQUIREMENTS WITH OWNER.
- PROVIDE ALL HARDWARE AS NECESSARY FOR PROPER OPERATION OF DOORS, WHETHER OR NOT LISTED IN HARDWARE SCHEDULE.
- ALL DOORS WITH LATCHING DEVICES MUST BE RELEASED WITH A FORCE OF 15LBS OR LESS AND THE PUSH/PULL HARDWARE MUST BE MANUFACTURED AND INSTALLED PER ILLINOIS ACCESSIBILITY REQUIREMENTS.
- LEVERSETS ARE BASED ON CORBIN RUSSWIN EXTRA HEAVY DUTY CYLINDRICAL LEVERSETS, SERIES CL3400, TRIM: ARMSTRONG, FINISH: UST08613 OIL RUBBED BRONZE.

HARDWARE LEGEND

H-1	2 PR. BUTT HINGES (HEAVY DUTY), 4-1/2" x 4-1/2"; HAGER BB1191
H-2	1 1/2 PR BUTT HINGES (HEAVY DUTY) 4 1/2" X 4 1/2", HAGAR BB1191
L-1	LEVERSET - (CLASSROOM FUNCTION) - CORBIN RUSSWIN CL 3655
L-2	LEVERSET - (STORAGE FUNCTION) - CORBIN RUSSWIN CL3657
L-3	LEVERSET - (PASSAGE FUNCTION) - CORBIN RUSSWIN CL 3610
L-4	LEVERSET - (ENTRANCE/OFFICE FUNCTION) - CORBIN RUSSWIN CL 3651
L-5	DEADBOLT - SCHLAGE 460P O' THUMBTURN ON EGRESS SIDE
L-6	LEVERSET (PRIVACY FUNCTION) - CORBIN RUSSWIN CL 3620
L-7	EXIT DEVICE (RIM LATCH DEVICE) - VON DUPRIN 99 W/ 992L PASSAGE FUNCTION LEVER W/ LOCK CYLINDER & CYLINDER DOGGING
L-8	WOOD DOOR EXIT PANIC DEVICE CONCEALED VERTICAL ROD VON DUPRIN 9947 WDC OR EQUAL. W/ LOCK CYLINDER & CYLINDER DOGGING
C-1	SURFACE MOUNTED CLOSER - MFR. STD. HEAVY DUTY CLOSER EQUAL TO - LCN 4041 W/ BUILT IN STOP, HOLD OPEN CONCEALED FLOOR CLOSER (FOR OFFSET PIVOTS) - RIXON #PH27 (KAWNEER STANDARD)
C-2	CONCEALED OVERHEAD CLOSER - DOOR MFR. STANDARD W/ BUILT IN STOP AND HOLD OPEN CONCEALED IN DOOR HEAD
C-3	CONCEALED OVERHEAD CLOSER - DOOR MFR. STANDARD W/ BUILT IN STOP AND HOLD OPEN CONCEALED IN DOOR HEAD
PP-1	PUSH/PULL SET - PULL: OPPOSITE PANIC HARDWARE OIL RUBBED BRONZE 613US 108 48" LONG LADDER PULL EQUAL TO ROCKWOOD RM3102 1" DIA. 48" CTC
ST-1	FLOOR MOUNTED STOP - GLYNN-JOHNSON #FB13
ST-2	WALL MOUNTED STOP - GLYNN-JOHNSON #50W
T-1	THRESHOLD - DOOR MFR. STANDARD FOR BUTT HINGES & OVERHEAD CLOSER
W-1	WEATHERSTRIPPING - DOOR MFR. STANDARD, W/ BOTTOM SWEEP
K-1	KICKPLATE - HIAWATHA, 34" X 10"
K-2	KICKPLATE - HIAWATHA, 34" X 24"
A0-1	AUTOMATIC SWING DOOR OPENER, COMPACT, LOW ENERGY W/ THREE POSITION PROGRAM SWITCH, LOCK DELAY, MANUAL OR AUTOMATIC USE EQUAL TO DORMA ED250. INCLUDE TWO HAND WIRED PUSH PLATES 4 1/2 SQUARE WITH ESCUTCHEON EQUAL TO BEA109BR451 W/ 10ESCUTCHEON45, RECESSED MOUNTED

LIGHTING SCHEDULE

++++	COOLEGGE FLEXIBLE LED STRIP
F-1	SP-LLS-12-R01-W108-L72-L2304-K27-WL2400
PP	PUSH PLATE FOR OPERATION OF DOORS
J	JUNCTION BOX
\$	WALL SWITCH

FINISH LEGEND

BASE	
B-1	PTD. WOOD BASE (MATCH EXISTING)
CEILING	
ACT-1	(E) ACT
FLOORING	
CT-1	DAL TILE VOLUME 1.0 INTENSITY PEBBLES
WALL	
P-1	BENJAMIN MOORE - COLOR

2000 N. Racine Ave.
Suite 2290
Chicago, Illinois
60614 6756
v. 773.528.2191
f. 773.528.3510

Date	Description	Rev. No.

PERMIT/BID Issue: 1 NOVEMBER 2016

Project Number: 2011.20.02

Project Name: St. Patrick Church

Address: 200 E Illinois St., Lemont, IL 60439

Issue: 1 NOVEMBER 2016

Checked By: RP & JX

Drawn By: 2011.20.02

Seals and Certificates: DLD

DANTE L. DOMENELLA
01-14898
STATE OF ILLINOIS

St. Patrick Church
200 E Illinois St., Lemont, IL
60439

First Floor & Demo Plan

A1.1

