

0 20 40
SCALE: 1"=40'

FOR CONTINUATION SEE SHEET C-7.7

FOR CONTINUATION SEE SHEET C-7.2

FOR CONTINUATION SEE SHEET C-7.3

NOTE:
THE LOCATIONS OF EXISTING UNDERGROUND UTILITIES ARE SHOWN IN AN APPROXIMATE WAY ONLY AS DISCLOSED BY AVAILABLE UTILITY COMPANY RECORDS AND HAVE NOT BEEN INDEPENDENTLY VERIFIED BY THE COMPANY. NO GUARANTEE IS EITHER EXPRESSED OR IMPLIED AS TO THE COMPLETENESS OR ACCURACY THEREOF. THE CONTRACTOR SHALL DETERMINE THE EXACT LOCATION OF ALL EXISTING UTILITIES BEFORE COMMENCING WORK, AND AGREES TO BE FULLY RESPONSIBLE FOR ANY AND ALL DAMAGES WHICH MIGHT BE OCCASIONED BY THE CONTRACTOR'S FAILURE TO EXACTLY LOCATE AND PRESERVE ANY AND ALL UNDERGROUND UTILITIES. THE CONTRACTOR SHALL NOTIFY THE DESIGN ENGINEER IMMEDIATELY IF A CONFLICT IS APPARENT.

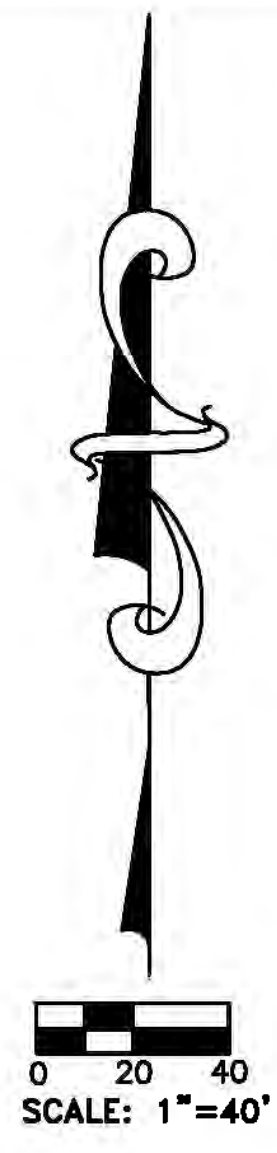
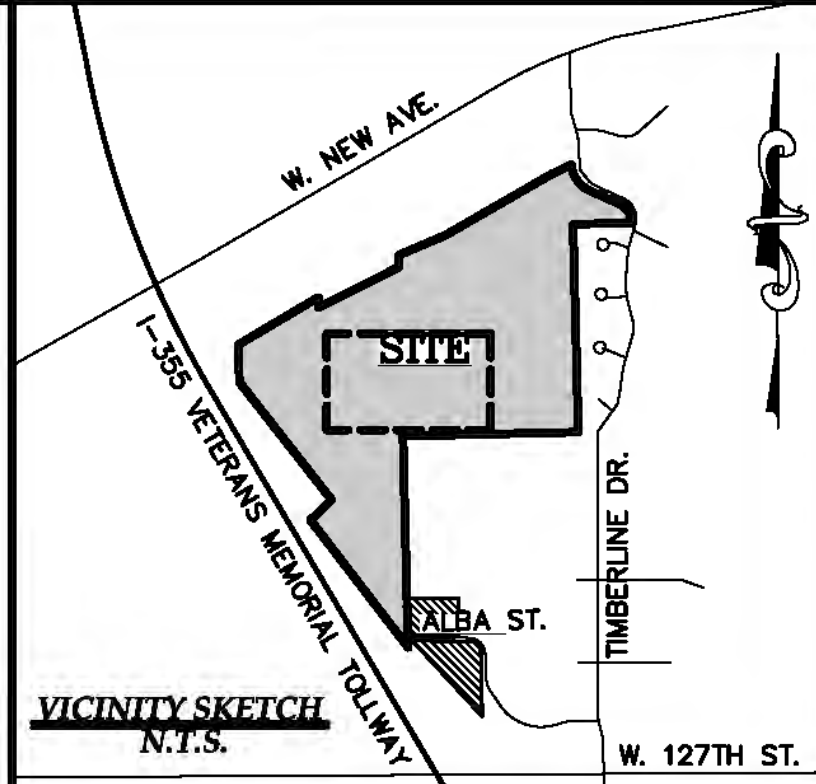
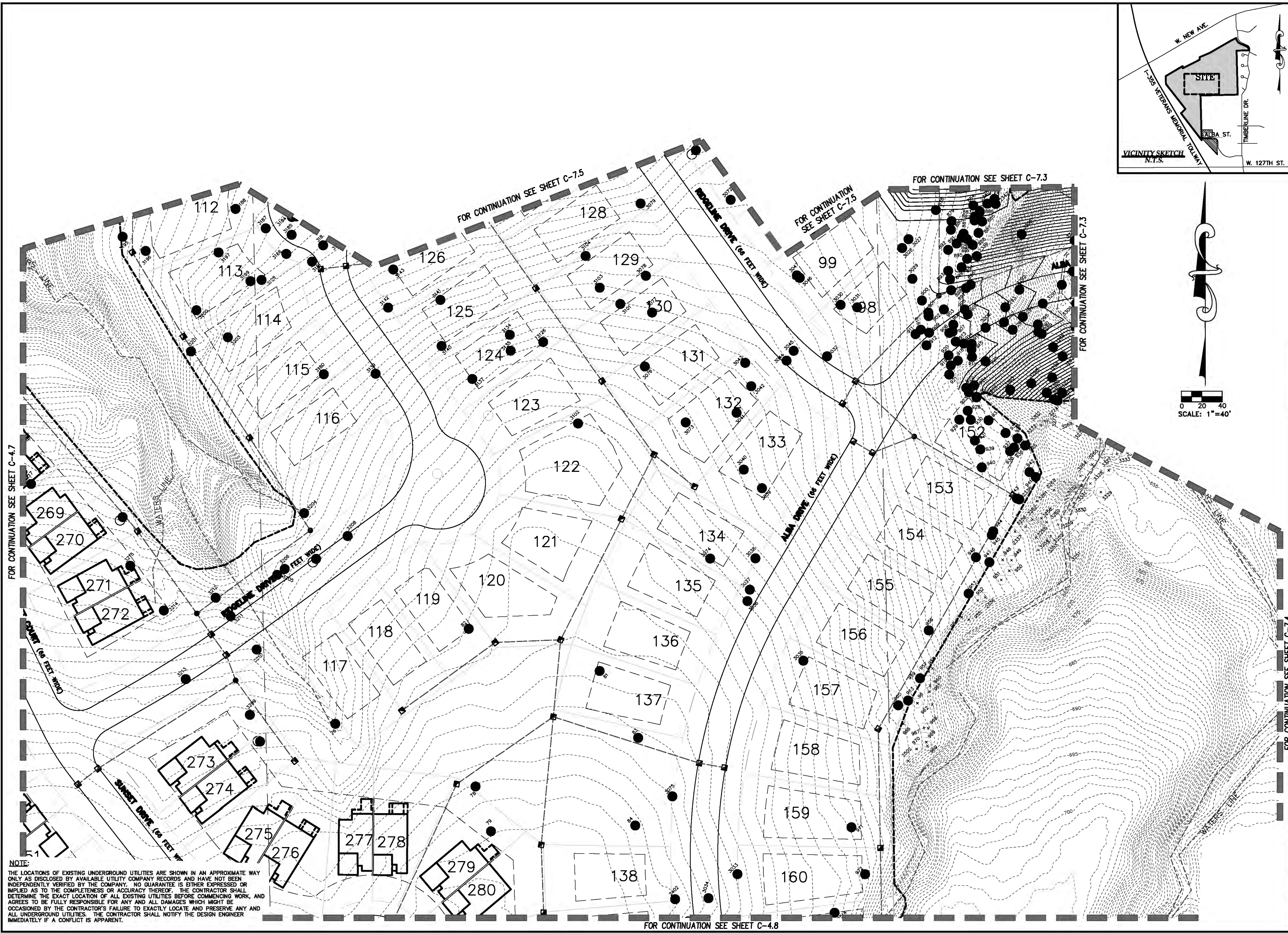
FOR CONTINUATION SEE SHEET C-7.6

GREENTECH ENGINEERING, INC.
 CIVIL ENGINEERS & LAND SURVEYORS
 51147 W. Pentacore Trail, Waucom, MI 48393
 Phone: (248) 668-0700 Fax: (248) 668-0701

811
 Know what's below
 Call before you dig.

CLIENT: INTREPID DEVELOPMENT
WOODLAND PLAN
 SECTION: 30 RANGE: 11E
 VISTANCIA TOWNSHIP: 37N
 VILLAGE OF LEMONT COOK COUNTY ILLINOIS

REVISED
 11-21-16 PLAN UPDATE
 DATE: 10-24-2016
 DRAWN BY:
 CHECKED BY: DJL
 FBK: ---
 CHF: C-7.5
 SCALE HOR 1"=40 FT. VER 1"=5 FT. 16-202



FOR CONTINUATION SEE SHEET C-4.7

FOR CONTINUATION SEE SHEET C-7.5

FOR CONTINUATION SEE SHEET C-7.5

FOR CONTINUATION SEE SHEET C-7.3

FOR CONTINUATION SEE SHEET C-7.3

FOR CONTINUATION SEE SHEET C-7.4

NOTE:
THE LOCATIONS OF EXISTING UNDERGROUND UTILITIES ARE SHOWN IN AN APPROXIMATE WAY ONLY AS DISCLOSED BY AVAILABLE UTILITY COMPANY RECORDS AND HAVE NOT BEEN INDEPENDENTLY VERIFIED BY THE COMPANY. NO GUARANTEE IS EITHER EXPRESSED OR IMPLIED AS TO THE COMPLETENESS OR ACCURACY THEREOF. THE CONTRACTOR SHALL DETERMINE THE EXACT LOCATION OF ALL EXISTING UTILITIES BEFORE COMMENCING WORK, AND AGREES TO BE FULLY RESPONSIBLE FOR ANY AND ALL DAMAGES WHICH MIGHT BE OCCASIONED BY THE CONTRACTOR'S FAILURE TO EXACTLY LOCATE AND PRESERVE ANY AND ALL UNDERGROUND UTILITIES. THE CONTRACTOR SHALL NOTIFY THE DESIGN ENGINEER IMMEDIATELY IF A CONFLICT IS APPARENT.

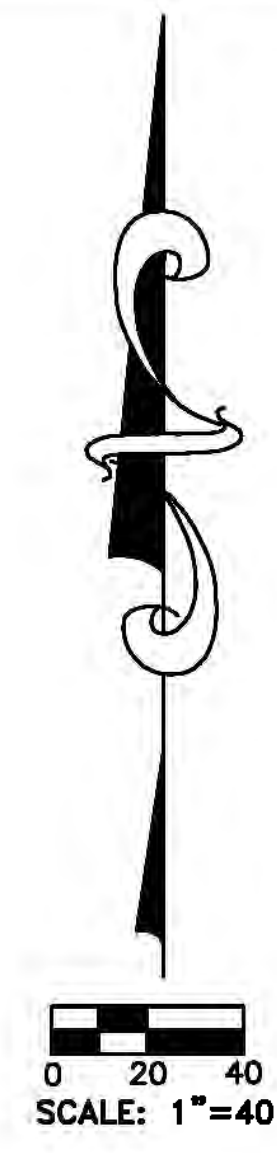
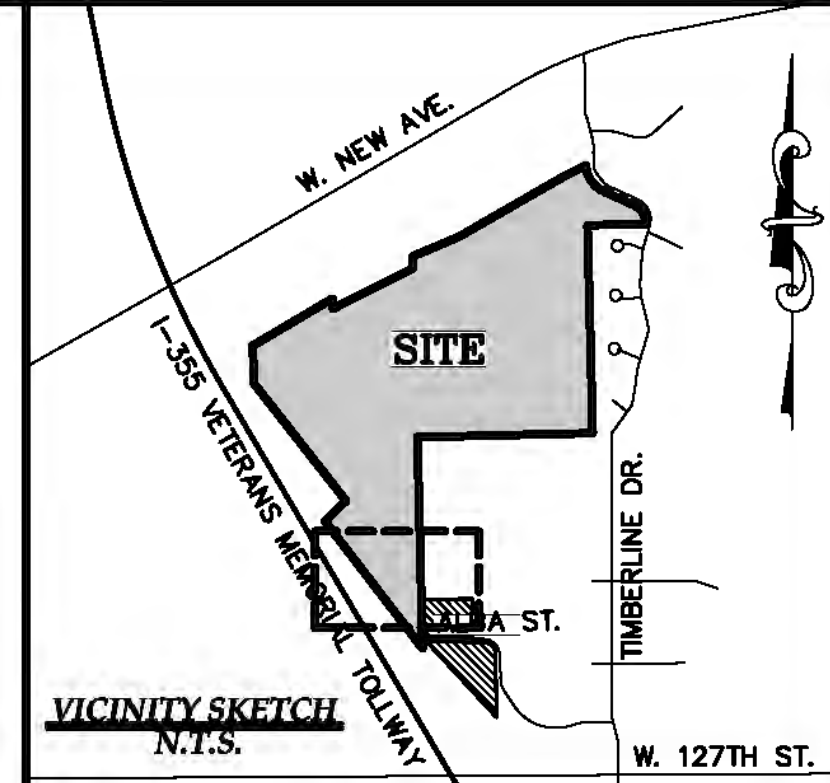
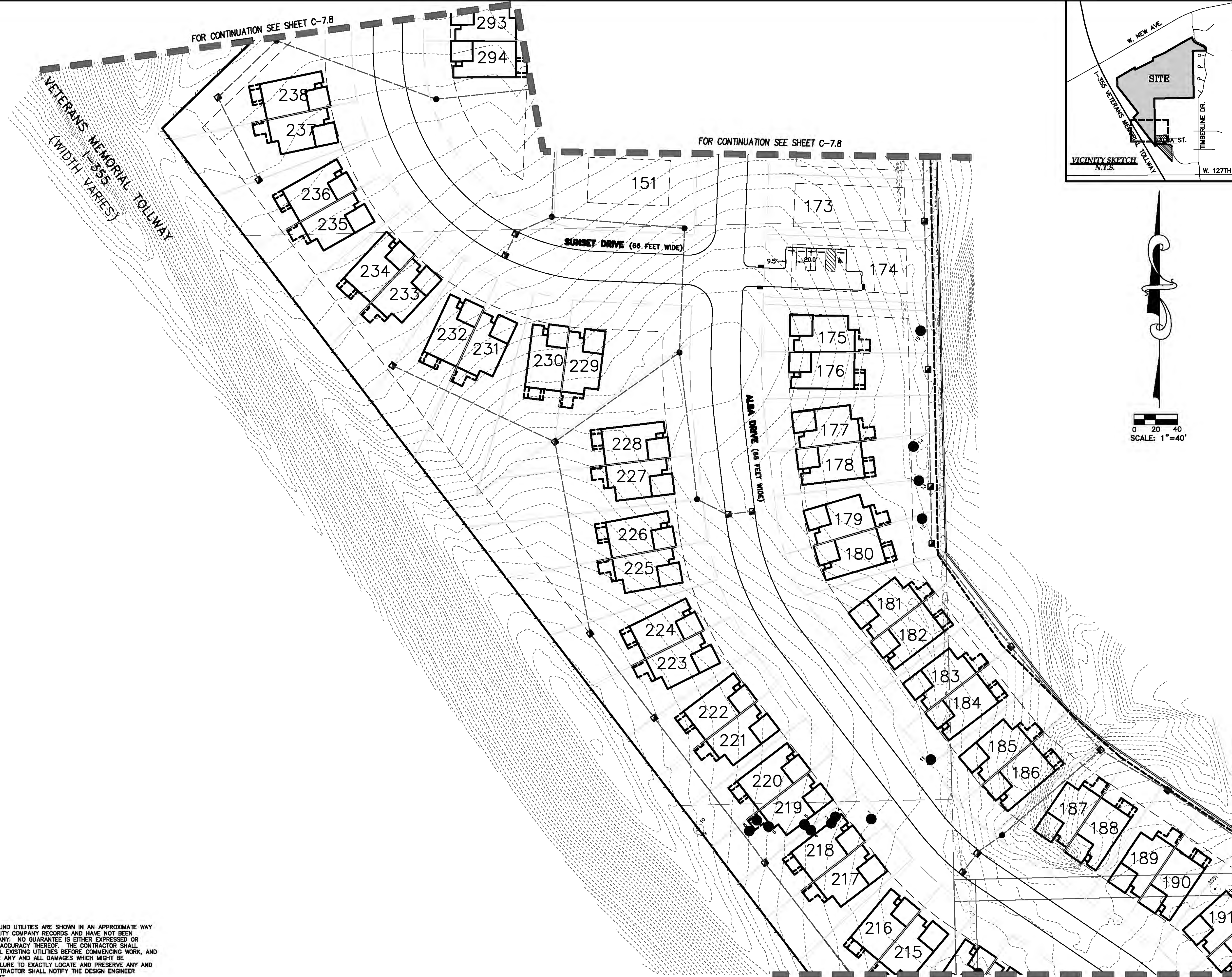
RESIDENTIAL
Site Condominium
Plot Plans
COMMERCIAL
Site Planning
Surveying & Mapping
Leasing & Multi-Unit
ALTA SURVEYS
Boundary Surveys
Easement Surveys
Preliminary Plat
Construction Staking

GREENTECH
ENGINEERING, INC.
CIVIL ENGINEERS & LAND SURVEYORS
51147 W. Pentacore Trail, Waucom, MI 48393
Phone: (248) 668-0700 Fax: (248) 668-0701

811
Know what's below
Call before you dig.

CLIENT: INTREPID DEVELOPMENT
WOODLAND PLAN
SECTION: 30
TOWNSHIP: 37N
VILLAGE OF LEMONT
COOK COUNTY
ILLINOIS
RANGE: 11E

REVISED
11-21-16 PLAN UPDATE
DATE: 10-24-2016
DRAWN BY:
CHECKED BY: DJL
FBK: ---
CHF: ---
SCALE: HOR 1"=40 FT.
VER 1"=4 FT.
C-7.6
16-202



NOTE:
 THE LOCATIONS OF EXISTING UNDERGROUND UTILITIES ARE SHOWN IN AN APPROXIMATE WAY ONLY AS DISCLOSED BY AVAILABLE UTILITY COMPANY RECORDS, AND HAVE NOT BEEN INDEPENDENTLY VERIFIED BY THE COMPANY. NO GUARANTEE IS EITHER EXPRESSED OR IMPLIED AS TO THE COMPLETENESS OR ACCURACY THEREOF. THE CONTRACTOR SHALL DETERMINE THE EXACT LOCATION OF ALL EXISTING UTILITIES BEFORE COMMENCING WORK, AND AGREES TO BE FULLY RESPONSIBLE FOR ANY AND ALL DAMAGES WHICH MIGHT BE OCCASIONED BY THE CONTRACTOR'S FAILURE TO EXACTLY LOCATE AND PRESERVE ANY AND ALL UNDERGROUND UTILITIES. THE CONTRACTOR SHALL NOTIFY THE DESIGN ENGINEER IMMEDIATELY IF A CONFLICT IS APPARENT.

RESIDENTIAL SURVEYING
 SITE DEVELOPMENT
 COMMERCIAL SURVEYING
 CIVIL ENGINEERS & LAND SURVEYORS

GREENTECH ENGINEERING, INC.
 CIVIL ENGINEERS & LAND SURVEYORS
 51147 W. Pontiac Trail, Waucom, MI 48393
 Phone: (248) 868-0700 Fax: (248) 668-0701

811
 Know what's below
 Call before you dig.

CLIENT: INTREPID DEVELOPMENT

WOODLAND PLAN

VISTANCIA TOWNSHIP, 37N VILLAGE OF LEMONT COOK COUNTY ILLINOIS

SECTION: 30 RANGE: 11E

REVISIONS:

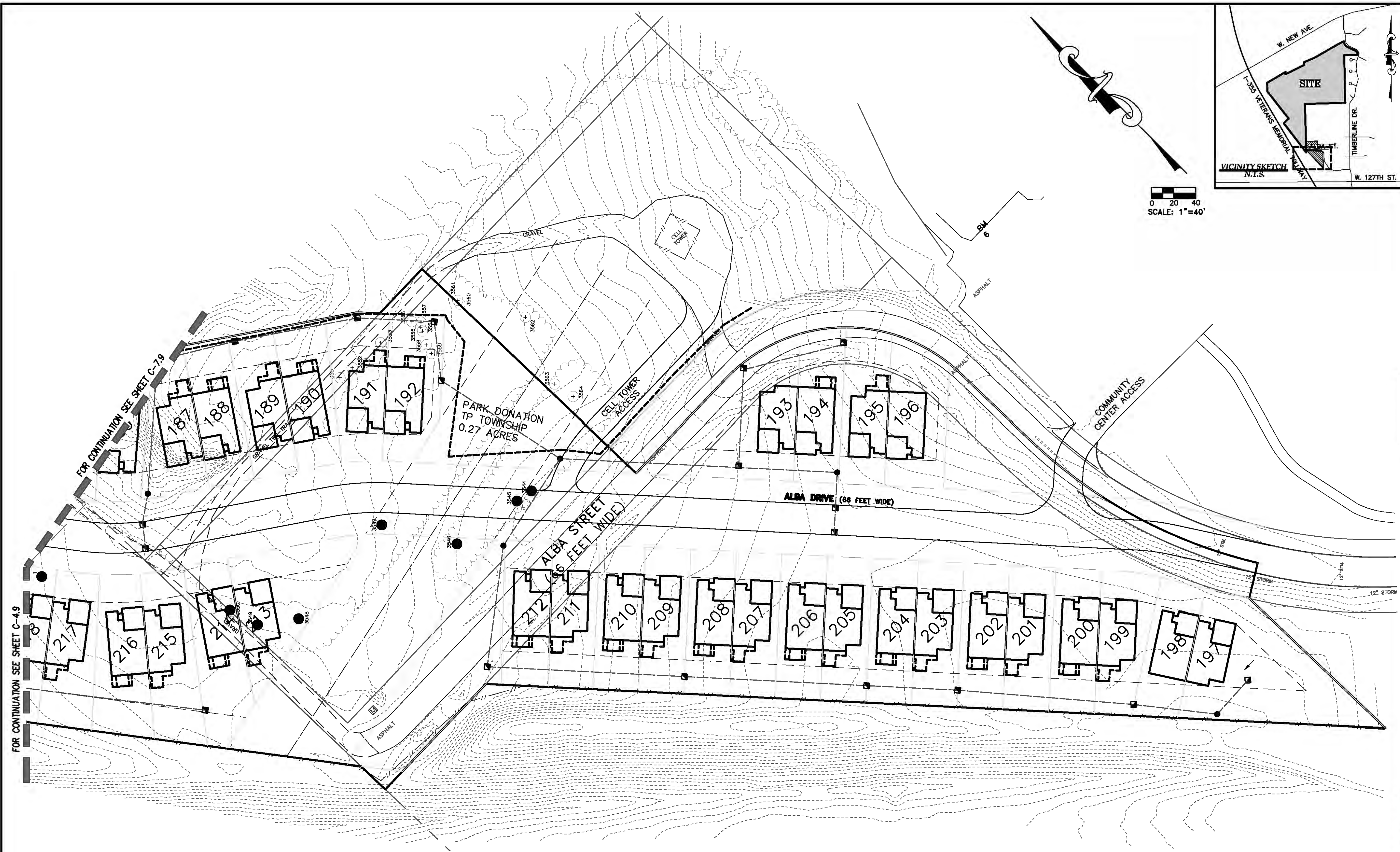
12-8-2016	PSP SUBMITTAL
11-21-16	PLAN UPDATE
DATE:	10-24-2016
DRAWN BY:	
CHECKED BY:	D.J.

FOR CONTINUATION SEE SHEET C-7.10

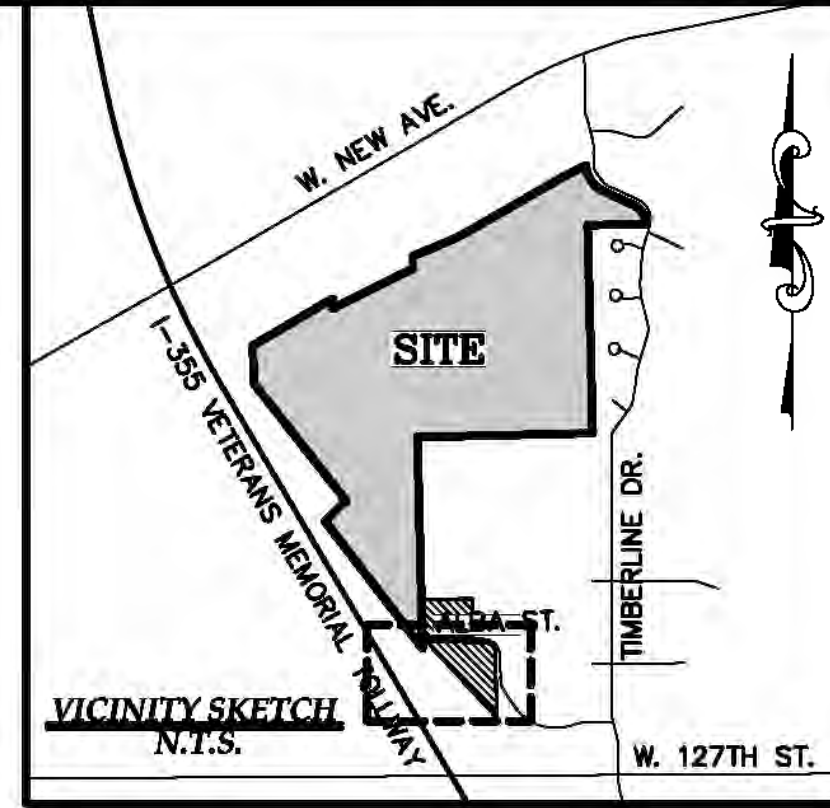
SCALE: HOR 1"=40 FT. VER 1"=8 FT.

C-7.9

16-202



0 20 40
SCALE: 1"=40'



RESIDENTIAL
Site Preparation
Subsidiary
Multi-Family
COMMERCIAL
Site Planning
Site Preparation
Industrial
Land Surveying
SURVEYING
Boundary Surveys
Topographic Surveys
Hydrographic Surveys
Construction Staking

GREENTECH
ENGINEERING, INC.
CIVIL ENGINEERS & LAND SURVEYORS
51147 W. Pontiac Trail, Waucom, MI 48393
Phone: (248) 868-0700 Fax: (248) 668-0701



FOR CONTINUATION SEE SHEET C-4.9

FOR CONTINUATION SEE SHEET C-7.9

NOTE:
THE LOCATIONS OF EXISTING UNDERGROUND UTILITIES ARE SHOWN IN AN APPROXIMATE WAY ONLY AS DISCLOSED BY AVAILABLE UTILITY COMPANY RECORDS AND HAVE NOT BEEN INDEPENDENTLY VERIFIED BY THE COMPANY. NO GUARANTEE IS EITHER EXPRESSED OR IMPLIED AS TO THE COMPLETENESS OR ACCURACY THEREOF. THE CONTRACTOR SHALL DETERMINE THE EXACT LOCATION OF ALL EXISTING UTILITIES BEFORE COMMENCING WORK, AND AGREES TO BE FULLY RESPONSIBLE FOR ANY AND ALL DAMAGES WHICH MIGHT BE OCCASIONED BY THE CONTRACTOR'S FAILURE TO EXACTLY LOCATE AND PRESERVE ANY AND ALL UNDERGROUND UTILITIES. THE CONTRACTOR SHALL NOTIFY THE DESIGN ENGINEER IMMEDIATELY IF A CONFLICT IS APPARENT.

CLIENT: INTREPID DEVELOPMENT

WOODLAND PLAN

SECTION: 30
TOWNSHIP: 37N
RANGE: 11E
VILLAGE OF LEMONT
COOK COUNTY
ILLINOIS

REVISED

12-8-2016 PSP SUBMITTAL
11-21-16 PLAN UPDATE

DATE: 10-24-2016

DRAWN BY:

CHECKED BY: D.J.

0 20 40

FBK: --

CHF:

SCALE HOR 1"=40 FT.
VER 1"=8 FT.

C-7.10

16-202

TAG NUMBER	DIAMETER (DBH)	COMMON NAME	SAVE / REMOVE
1	26, 26	APPLE	REMOVE
2	16	APPLE	REMOVE
3	14	APPLE	REMOVE
4	8, 6	APPLE	REMOVE
5	10, 6	APPLE	REMOVE
6	12, 10, 8	APPLE	REMOVE
7	11, 10	APPLE	REMOVE
8	9, 7, 6	APPLE	REMOVE
9	7, 7	APPLE	REMOVE
10	9, 6	APPLE	REMOVE
11	24	APPLE	SAVE
12	26	APPLE	REMOVE
13	26, 24, 24	APPLE	REMOVE
14	12, 9, 9	APPLE	REMOVE
15	7, 6	APPLE	REMOVE
16	10, 6	APPLE	REMOVE
17	8	APPLE	REMOVE
18	15, 7, 6	APPLE	REMOVE
19	12	APPLE	SAVE
20	32	APPLE	SAVE
21	42	APPLE	SAVE
22	24	APPLE	SAVE
23	12	APPLE	SAVE
24	16	APPLE	SAVE
25	17, 16, 12	APPLE	REMOVE
26	6	APPLE	REMOVE
27	6	APPLE	REMOVE
28	10	APPLE	REMOVE
29	7	APPLE	REMOVE
30	6	APPLE	REMOVE
31	10	APPLE	REMOVE
32	6	APPLE	REMOVE
33	10	APPLE	REMOVE
34	12	APPLE	REMOVE
35	14	APPLE	REMOVE
36	16	APPLE	REMOVE
37	14	APPLE	REMOVE
38	10	ASH	REMOVE
39	10	ASH	REMOVE
40	10	ASH	REMOVE
41	14	ASH	REMOVE
42	16	ASH	REMOVE
43	15	ASH	REMOVE
44	8	ASH	REMOVE
45	15	ASH	REMOVE
46	11	ASH	REMOVE
47	8, 8, 6	ASH	REMOVE
48	9, 9	ASH	REMOVE
49	10, 6, 5, 5	ASH	REMOVE
50	9	ASH	REMOVE
51	11	ASH	REMOVE
52	12	ASH	REMOVE
53	12, 10	ASH	REMOVE
54	6	ASH	REMOVE
55	13	ASH	REMOVE
56	8	ASH	SAVE
57	8	ASH	REMOVE
58	12	ASH	SAVE
59	10, 10	ASH	SAVE
60	10	ASH	SAVE
61	13	ASH	REMOVE
62	6, 5	ASH	REMOVE
63	6, 5	ASH	REMOVE
64	6, 6	ASH	REMOVE
65	7, 5	ASH	REMOVE
66	7, 6, 5	ASH	SAVE
67	8, 8	ASH	REMOVE
68	32, 18	ASH (DEAD)	REMOVE
71	26, 18	ASH (DEAD)	SAVE
76	24, 24	ASH (DEAD)	REMOVE
78	13, 7, 1	ASH (DEAD)	REMOVE
79	8	ASH (DEAD)	REMOVE
81	7	ASH (DEAD)	REMOVE
82	17	ASH (DEAD)	REMOVE
83	13	ASH (DEAD)	REMOVE
84	7	ASH (DEAD)	REMOVE
88	10	ASH (DEAD)	REMOVE
90	7, 6	ASH (DEAD)	REMOVE
92	7, 6, 5	ASH (DEAD)	REMOVE
93	6	ASH (DEAD)	REMOVE
94	6	ASH (DEAD)	REMOVE
95	7	ASH (DEAD)	REMOVE
96	7, 6	ASH (DEAD)	REMOVE
97	7	ASH (DEAD)	REMOVE
98	8	ASH (DEAD)	REMOVE
99	6	ASH (DEAD)	REMOVE
100	7	ASH (DEAD)	REMOVE
101	6	ASH (DEAD)	REMOVE
102	12	ASH (DEAD)	REMOVE
103	6	ASH (DEAD)	REMOVE
104	8	ASH (DEAD)	REMOVE
105	6	ASH (DEAD)	REMOVE
106	7, 6	ASH (DEAD)	REMOVE
107	6	ASH (DEAD)	REMOVE
108	6	ASH (DEAD)	REMOVE
109	7	ASH (DEAD)	REMOVE
110	7	ASH (DEAD)	REMOVE
111	6, 6	ASH (DEAD)	REMOVE
112	6	ASH (DEAD)	REMOVE
113	7	ASH (DEAD)	REMOVE
114	6	ASH (DEAD)	REMOVE
115	6	ASH (DEAD)	REMOVE
116	6	ASH (DEAD)	REMOVE
117	8	ASH (DEAD)	REMOVE
118	14	ASH (DEAD)	REMOVE
119	7	ASH (DEAD)	REMOVE
120	11	ASH (DEAD)	REMOVE
121	12	ASH (DEAD)	REMOVE

TAG NUMBER	DIAMETER (DBH)	COMMON NAME	SAVE / REMOVE
122	27	ASH (DEAD)	SAVE
125	12	ASH (DEAD)	REMOVE
126		ASH (DEAD)	SAVE
127		ASH (DEAD)	SAVE
128	6	ASH (DEAD)	SAVE
129	6	ASH (DEAD)	REMOVE
130	6	ASH (DEAD)	REMOVE
131	8, 7	ASH (DEAD)	REMOVE
132		ASH (DEAD)	SAVE
133	6	ASH (DEAD)	REMOVE
134	6, 6, 5, 5	ASH (DEAD)	REMOVE
135	8, 6, 6, 5	ASH (DEAD)	REMOVE
136	10, 8, 7	ASH (DEAD)	REMOVE
137	6	ASH (DEAD)	REMOVE
138	6	ASH (DEAD)	REMOVE
139	8	ASH (DEAD)	REMOVE
140	6	ASH (DEAD)	REMOVE
141	6	ASH (DEAD)	REMOVE
142	6	ASH (DEAD)	REMOVE
143	42	ASH (DEAD)	REMOVE
144	9	ASH (DEAD)	REMOVE
145	7	ASH (DEAD)	REMOVE
146	34	ASH (DEAD)	REMOVE
147	6	ASH (DEAD)	REMOVE
148	10	ASH (DEAD)	REMOVE
150	6	ASH (DEAD)	REMOVE
151	7, 5	ASH (DEAD)	REMOVE
152	12	ASH (DEAD)	REMOVE
153	11	ASH (DEAD)	REMOVE
154	12	ASH (DEAD)	REMOVE
156	6	ASH (DEAD)	REMOVE
157	6	ASH (DEAD)	SAVE
158	16	ASH (DEAD)	REMOVE
159	6	ASH (DEAD)	REMOVE
160	7	ASH (DEAD)	REMOVE
161	16	ASH (DEAD)	REMOVE
162	6	ASH (DEAD)	REMOVE
180	8	ASH (DEAD)	SAVE
181	10	ASH (DEAD)	SAVE
182	12	ASH (DEAD)	SAVE
183	7	ASH (DEAD)	SAVE
184	27	ASH (DEAD)	SAVE
185	28	ASH (DEAD)	SAVE
186	10	ASH (DEAD)	SAVE
187	12	ASH (DEAD)	SAVE
188	22	ASH (DEAD)	REMOVE
189	8	ASH (DEAD)	REMOVE
190	12	ASH (DEAD)	REMOVE
191	12	ASH (DEAD)	SAVE
192	8	ASH (DEAD)	SAVE
193	6	ASH (DEAD)	REMOVE
194	7	ASH (DEAD)	SAVE
163	6	ASH (DEAD)	REMOVE
164	6	ASH (DEAD)	REMOVE
165	6	ASH (DEAD)	REMOVE
166	11	ASH (DEAD)	SAVE
167	24	ASH (DEAD)	SAVE
168	9	ASH (DEAD)	SAVE
169	14	ASH (DEAD)	SAVE
170	8	ASH (DEAD)	SAVE
171	14	ASH (DEAD)	SAVE
172	15	ASH (DEAD)	SAVE
173	32	ASH (DEAD)	REMOVE
174	8	ASH (DEAD)	REMOVE
175	36	ASH (DEAD)	REMOVE
176	28	ASH (DEAD)	SAVE
177	10	ASH (DEAD)	SAVE
178	27	ASH (DEAD)	REMOVE
179	48	ASH (DEAD)	REMOVE
195	16	BASSWOOD	SAVE
196	13	BASSWOOD	SAVE
197	8	BASSWOOD	REMOVE
198	12	BEECH	REMOVE
199	6	BEECH	SAVE
200	12	BQX ELDER	SAVE
201	32	BQX ELDER	SAVE
202	6	BQX ELDER	SAVE
203	6	BQX ELDER	SAVE
204	6	BQX ELDER	SAVE
205	6	BQX ELDER	REMOVE
206	6	BQX ELDER	REMOVE
207	10	BQX ELDER	SAVE
208	11	BQX ELDER	REMOVE
209	10	BQX ELDER	REMOVE
210	11	BQX ELDER	SAVE
211	6	BQX ELDER	SAVE
212	6	BQX ELDER	REMOVE
213	6	BQX ELDER	SAVE
214	8	BQX ELDER	SAVE
215	6	BQX ELDER	SAVE
216	10	BQX ELDER	REMOVE
217	8	BQX ELDER	REMOVE
218	7	BQX ELDER	SAVE
219	6	BQX ELDER	REMOVE
220	16	BQX ELDER	REMOVE
221	6	BQX ELDER	REMOVE
222	30	BQX ELDER	REMOVE
223	7	BQX ELDER	REMOVE
224	6	BQX ELDER	REMOVE
225	6	BQX ELDER	REMOVE
226	8	BQX ELDER	REMOVE
227	6	BQX ELDER	REMOVE
228	8	BQX ELDER	SAVE
229	6	BUCKEYE	REMOVE
230	7, 7	BUCKEYE	SAVE
231	8	BUCKEYE	REMOVE
232	8	BUCKEYE	SAVE
233	8	BUCKEYE	SAVE
234	6	BUCKEYE	SAVE
235	6	BUCKEYE	REMOVE

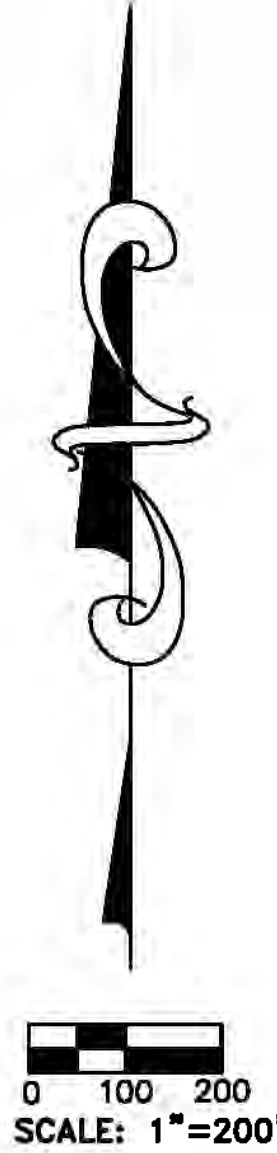
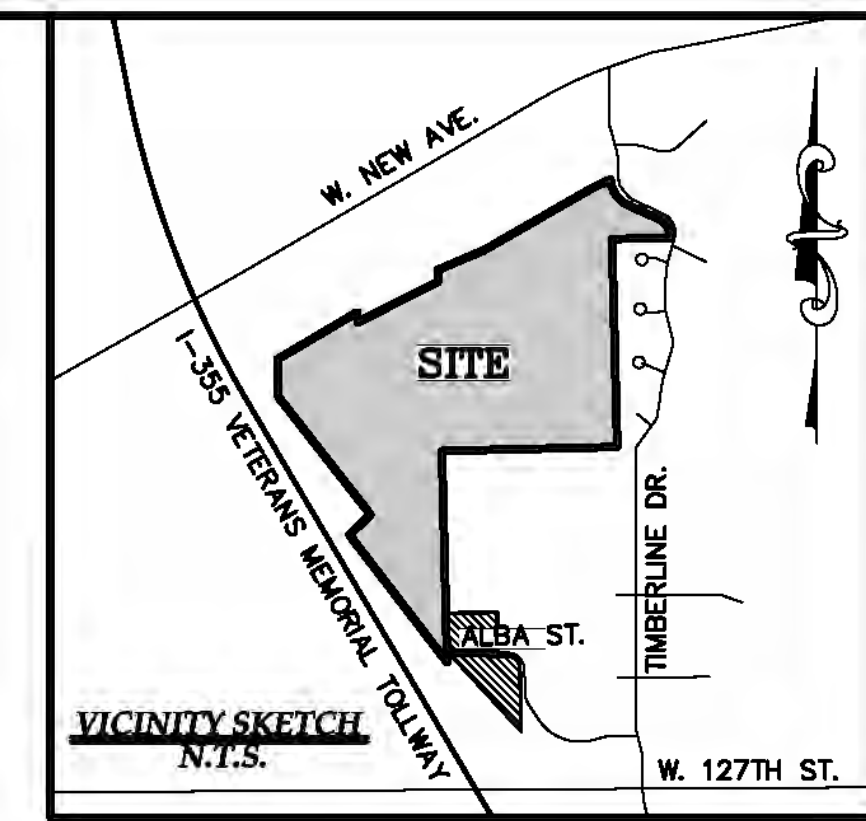
TAG NUMBER	DIAMETER (DBH)	COMMON NAME	SAVE / REMOVE
236	6	BUTTERNUT	SAVE
237	6	BUTTERNUT	REMOVE
238	6	CEDAR	REMOVE
239	6	CHERRY	REMOVE
240	8	CHERRY	REMOVE
241	11	CHERRY	REMOVE
242	8	CHERRY	REMOVE
243	10	CHERRY	SAVE
244	8	CHERRY	REMOVE
245	14	CHERRY	REMOVE
246	9	CHERRY	REMOVE
247	6	CHERRY	REMOVE
248	16	CHERRY	SAVE
249	8	CHERRY	SAVE
250	6	CHERRY	REMOVE
250	6	CHERRY	REMOVE
251	7	CHERRY	REMOVE
252	14	CHERRY	REMOVE
253	42	CHERRY	REMOVE
254	6	CHERRY	REMOVE
255	16	CHERRY	SAVE
256	8	CHERRY	REMOVE
257	8	CHERRY	REMOVE
258	10	CHERRY	REMOVE
259	10	CHERRY	REMOVE
260	6	CHERRY	REMOVE
261	10	CHERRY	SAVE
262	12	CHERRY	SAVE
262	10	CHERRY	REMOVE
263	48	CHERRY	REMOVE
264	10	CHERRY	REMOVE
265	12	CHERRY	REMOVE
266	24	CHERRY	REMOVE
267	20	CHERRY	REMOVE
268	6	CHERRY	REMOVE
269	7	CHERRY	REMOVE
270	7	CHERRY	REMOVE
271	8	CHERRY	REMOVE
272	21	CHERRY	REMOVE
273	6	CHERRY	REMOVE
274	8	CHERRY	REMOVE
275	16	CHERRY	REMOVE
276	10	CHERRY	REMOVE
277	12	CHERRY	REMOVE
278	7, 6	CHERRY	REMOVE
279	6	CHERRY	REMOVE
280	6	CHERRY	REMOVE
281	6	CHERRY	REMOVE
282	36	CHERRY	SAVE
283	11	CHERRY	REMOVE
284	6	CHERRY	REMOVE
285	36	CHERRY	REMOVE
286	6	CHERRY	REMOVE
287	20	CHERRY	REMOVE
288	24	CHERRY	REMOVE
289	36	CHERRY	REMOVE
290	6	CHERRY	REMOVE
291	6	CHERRY	REMOVE
292	12	CHERRY	SAVE
293	10	CHERRY	REMOVE
294	8	CHERRY	REMOVE
295	6	CHERRY	REMOVE
296	8	CHERRY	REMOVE
297	36	CHERRY	REMOVE
298	40	CHERRY	REMOVE
299	8	CHERRY	REMOVE
300	6	CHERRY	REMOVE
301	7	CHERRY	REMOVE
302	8	CHERRY	REMOVE
303	7	CHERRY	REMOVE
304	8	CHERRY	REMOVE
305	7	CHERRY	SAVE
306	9	CHERRY	REMOVE
307	8	CHERRY	REMOVE
308	9	CHERRY	REMOVE
309	6	CHERRY	REMOVE
310	10	CHERRY	REMOVE
311	10	CHERRY	REMOVE
312	7	CHERRY	REMOVE
313	16	CHERRY	REMOVE
314	12	CHERRY	REMOVE
315	14	CHERRY	REMOVE
316	6	CHERRY	REMOVE
317	12	CHERRY	REMOVE
318	14, 10, 6	CHERRY	SAVE
319	12	CHERRY	REMOVE
320	10	CHERRY	REMOVE
321	7	CHERRY	REMOVE
322	6	CHERRY	REMOVE
323	9	CHERRY	REMOVE
324	28	CHERRY	SAVE
325	7	CHERRY	SAVE
326	8	CHERRY	SAVE
327	8	CHERRY	SAVE
328	6	CHERRY	SAVE
329	12	CHERRY	REMOVE
330	6	CHERRY	REMOVE
331	8	CHERRY	REMOVE
332	12	CHERRY	SAVE
333	8	CHERRY	SAVE
334	8	CHERRY	SAVE
335	8	CHERRY	SAVE
336	8	CHERRY	SAVE
337	8	CHERRY	SAVE
338	9	CHERRY	SAVE
339	12	CHERRY	SAVE
340	10	CHERRY	SAVE
341	10	CHERRY	REMOVE
342	6	CHERRY	SAVE
343	7	CHERRY	SAVE

TAG NUMBER	DIAMETER (DBH)	COMMON NAME	SAVE / REMOVE
344	9	CHERRY	SAVE
345	8	CHERRY	REMOVE
346	7	CHERRY	SAVE
347	6	CHERRY	SAVE
348	12	CHERRY	SAVE
349	12	CHERRY	SAVE
350	15	CHERRY	SAVE
351	10	CHERRY	REMOVE
352	16	CHERRY	SAVE
353	14	CHERRY	SAVE
354	7	CHERRY	SAVE
355	8	CHERRY	SAVE
356	10	CHERRY	REMOVE
357	6	CHERRY	SAVE
358	8	CHERRY	SAVE
359	12	CHERRY	REMOVE
360	9	CHERRY	REMOVE
361	10	CHERRY	SAVE
362	8	CHERRY	SAVE
363	7	CHERRY	REMOVE
364	9	CHERRY	REMOVE
365	8	CHERRY	SAVE
366	7	CHERRY	SAVE
367	8	CHERRY	REMOVE
368	6	CHERRY	REMOVE
369	14	CHERRY	REMOVE
370	8	CHERRY	REMOVE
371	8	CHERRY	SAVE
372	8	CHERRY	SAVE
373	6	CHERRY	SAVE
374	15	CHERRY	REMOVE
375	7	CHERRY	REMOVE
376			

BENCHMARKS:

- BM#1**
ARROW ON HYDRANT, SOUTHEAST CORNER
TIMBERLINE DRIVE & OLD QUARRY ROAD.
ELEVATION: 598.87 N.A.V.D. 1988
- BM#2**
MAG NAIL WEST SIDE POWER POLE, 55'± NORTH
OF LOT 40, "TIMBERLINE 1" SUBDIVISION.
ELEVATION: 678.27 N.A.V.D. 1988
- BM#3**
R.R. SPIKE NORTH SIDE POWER POLE, REAR
PROPERTY LINE OF #85 TIMBERLINE DRIVE.
ELEVATION: 726.34 N.A.V.D. 1988
- BM#4**
MAG NAIL WEST SIDE 6" OAK (TAG #2356)
95'± EAST OF THE NORTH-SOUTH 1/4 LINE,
780'± NORTH OF THE CENTER OF SECTION 30.
ELEVATION: 677.66 N.A.V.D. 1988
- BM#5**
MAG NAIL SOUTH SIDE OF POWER POLE 785'±
WEST OF THE NORTH-SOUTH 1/4 LINE, 320'±
SOUTH OF THE CENTER OF SECTION 30.
ELEVATION: 723.38 N.A.V.D. 1988
- BM#6**
ARROW ON HYDRANT, NORTH SIDE OF PARKING
LOT LEMONT TOWNSHIP PARK BUILDING, EAST
SIDE OF ALBA RD.
ELEVATION: 773.49 N.A.V.D. 1988
- BM#7**
ARROW ON HYDRANT, NORTHEASTERLY SIDE OF
ALBA RD, 680'± WEST OF TIMBERLINE DR.
ELEVATION: 766.66 N.A.V.D. 1988

NOTE:
THE LOCATIONS OF EXISTING UNDERGROUND UTILITIES ARE SHOWN IN AN APPROXIMATE WAY ONLY AS DISCLOSED BY AVAILABLE UTILITY COMPANY RECORDS AND HAVE NOT BEEN INDEPENDENTLY VERIFIED BY THE COMPANY. NO GUARANTEE IS EITHER EXPRESSED OR IMPLIED AS TO THE COMPLETENESS OR ACCURACY THEREOF. THE CONTRACTOR SHALL DETERMINE THE EXACT LOCATION OF ALL EXISTING UTILITIES BEFORE COMMENCING WORK, AND AGREES TO BE FULLY RESPONSIBLE FOR ANY AND ALL DAMAGES WHICH MIGHT BE OCCASIONED BY THE CONTRACTOR'S FAILURE TO EXACTLY LOCATE AND PRESERVE ANY AND ALL UNDERGROUND UTILITIES. THE CONTRACTOR SHALL NOTIFY THE DESIGN ENGINEER IMMEDIATELY IF A CONFLICT IS APPARENT.



OVERALL AREA COVERAGE=	105.37	ACRES
TOWNSHIP PARK DONATION=	3.73	ACRES
TOTAL SITE AREA =	101.64	ACRES
REQUIRED 15% OPEN SPACE AREA (104.73AC * 15%)	15.25	ACRES
OPEN SPACE "A"	16.34	ACRES
OPEN SPACE "B"	2.69	ACRES
OPEN SPACE "C"	0.97	ACRES
OPEN SPACE "D"	0.81	ACRES
OPEN SPACE "E"	0.03	ACRES
OPEN SPACE "F"	4.17	ACRES
OPEN SPACE "G"	0.43	ACRES
TOTAL OPEN SPACE PROVIDED	25.44	ACRES
SUMMARY		
	(%)	(ACRES)
TOTAL OPEN SPACE REQUIRED	15%	15.25
TOTAL OPEN SPACE PROVIDED	25%	25.44

CLIENT: INTREPID DEVELOPMENT

OPEN SPACE PLAN

RANGE: 11E
SECTION: 30
TOWNSHIP: 37N
VILLAGE OF LEMONT
COOK COUNTY
ILLINOIS

REVISIONS
 11-21-2016 UPDATE
 DATE: 10-24-2016
 DRAWN BY:
 CHECKED BY: DJL

FBK: --
CHF: --
SCALE HOR 1"=200 FT.
VER 1"=E FT.

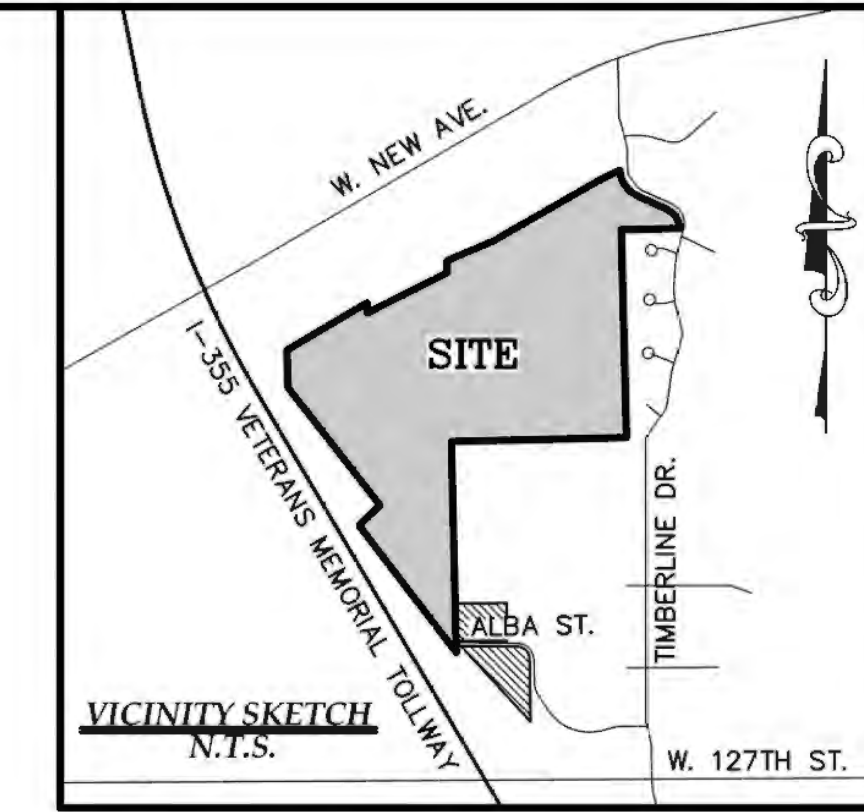
11-21-2016 UPDATE
 DATE: 10-24-2016
 DRAWN BY:
 CHECKED BY: DJL

GREENTECH

ENGINEERING, INC.
CIVIL ENGINEERS & LAND SURVEYORS
51147 W. Pontiac Trail, Waucom, WI 48393
Phone: (248) 668-0700 Fax: (248) 668-0701

BENCHMARKS:

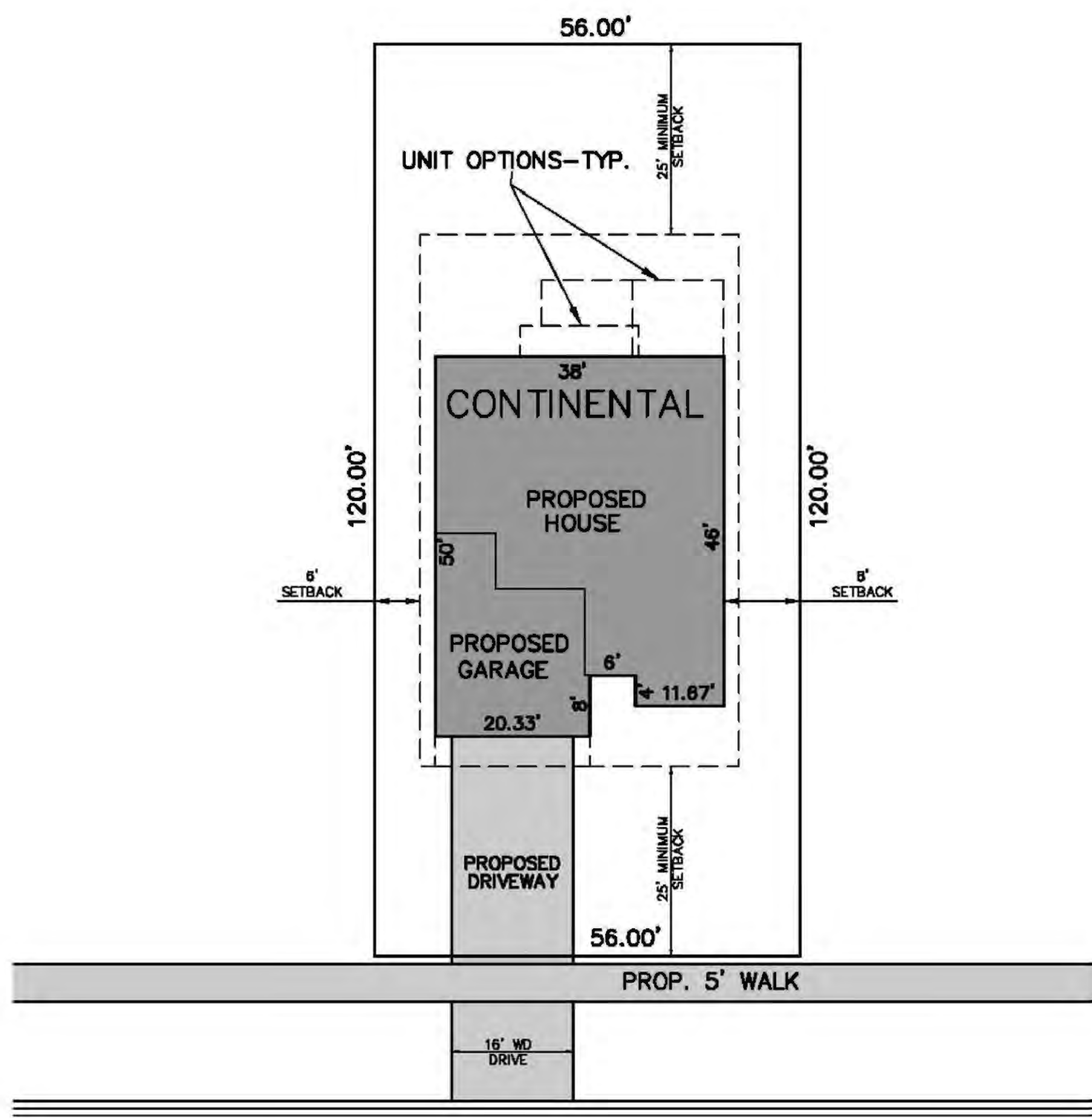
- BM#1**
ARROW ON HYDRANT, SOUTHEAST CORNER
TIMBERLINE DRIVE & OLD QUARRY ROAD.
ELEVATION: 598.87 N.A.V.D. 1988
- BM#2**
MAG NAIL WEST SIDE POWER POLE, 55'± NORTH
OF LOT 40, 'TIMBERLINE 1' SUBDIVISION.
ELEVATION: 678.27 N.A.V.D. 1988
- BM#3**
R.R. SPIKE NORTH SIDE POWER POLE, REAR
PROPERTY LINE OF #85 TIMBERLINE DRIVE.
ELEVATION: 726.34 N.A.V.D. 1988
- BM#4**
MAG NAIL WEST SIDE 6" OAK (TAG #2356)
95'± EAST OF THE NORTH-SOUTH 1/4 LINE,
760'± NORTH OF THE CENTER OF SECTION 30.
ELEVATION: 677.66 N.A.V.D. 1988
- BM#5**
MAG NAIL SOUTH SIDE OF POWER POLE 785'±
WEST OF THE NORTH-SOUTH 1/4 LINE, 320'±
SOUTH OF THE CENTER OF SECTION 30.
ELEVATION: 723.38 N.A.V.D. 1988
- BM#6**
ARROW ON HYDRANT, NORTH SIDE OF PARKING
LOT LEMONT TOWNSHIP PARK BUILDING, EAST
SIDE OF ALBA RD.
ELEVATION: 773.49 N.A.V.D. 1988
- BM#7**
ARROW ON HYDRANT, NORTHEASTERLY SIDE OF
ALBA RD, 680'± WEST OF TIMBERLINE DR.
ELEVATION: 766.66 N.A.V.D. 1988



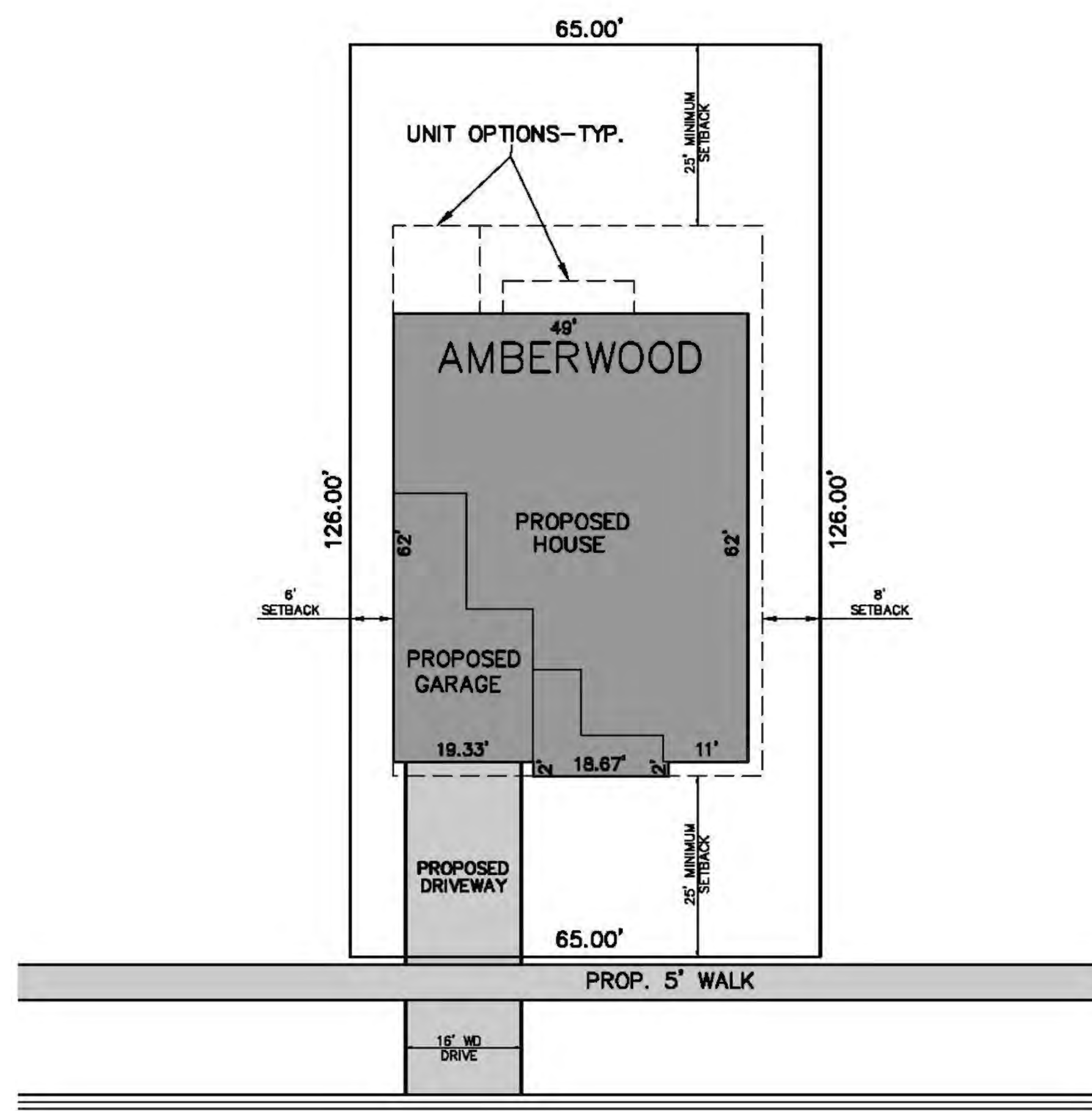
GREENTECH ENGINEERING, INC.
CIVIL ENGINEERS & LAND SURVEYORS
51147 W. Pontiac Trail, Waukom, MI 48393
Phone: (248) 868-0700 Fax: (248) 868-0701

RESIDENTIAL: Site Preparation, Multi-Family, Commercial, Site Planning, Site Engineering, Land Surveying, SURVEYING: Boundary, Station, Topographic, Utility, Construction Staking

811
Know what's below
Call before you dig.



TYPICAL LOT LAYOUT
(LOTS 98-169 & 172-174)



TYPICAL LOT LAYOUT
(LOTS 1-97 & 170-171)

NOTE:
THE LOCATIONS OF EXISTING UNDERGROUND UTILITIES ARE SHOWN IN AN APPROXIMATE WAY ONLY AS DISCLOSED BY AVAILABLE UTILITY COMPANY RECORDS AND HAVE NOT BEEN INDEPENDENTLY VERIFIED BY THE COMPANY. NO GUARANTEE IS EITHER EXPRESSED OR IMPLIED AS TO THE COMPLETENESS OR ACCURACY THEREOF. THE CONTRACTOR SHALL DETERMINE THE EXACT LOCATION OF ALL EXISTING UTILITIES BEFORE COMMENCING WORK, AND AGREES TO BE FULLY RESPONSIBLE FOR ANY AND ALL DAMAGES WHICH MIGHT BE OCCASIONED BY THE CONTRACTOR'S FAILURE TO EXACTLY LOCATE AND PRESERVE ANY AND ALL UNDERGROUND UTILITIES. THE CONTRACTOR SHALL NOTIFY THE DESIGN ENGINEER IMMEDIATELY IF A CONFLICT IS APPARENT.

CLIENT: INTREPID DEVELOPMENT

ARCHITECTURAL PLANS

SECTION: 30
VISTANCIA
TOWNSHIP: 17N
VILLAGE OF LEMONT
COOK COUNTY
ILLINOIS

RANGE: 11E

REVISIONS

12-8-2016 PSP SUBMITTAL

DATE: 10-24-2016

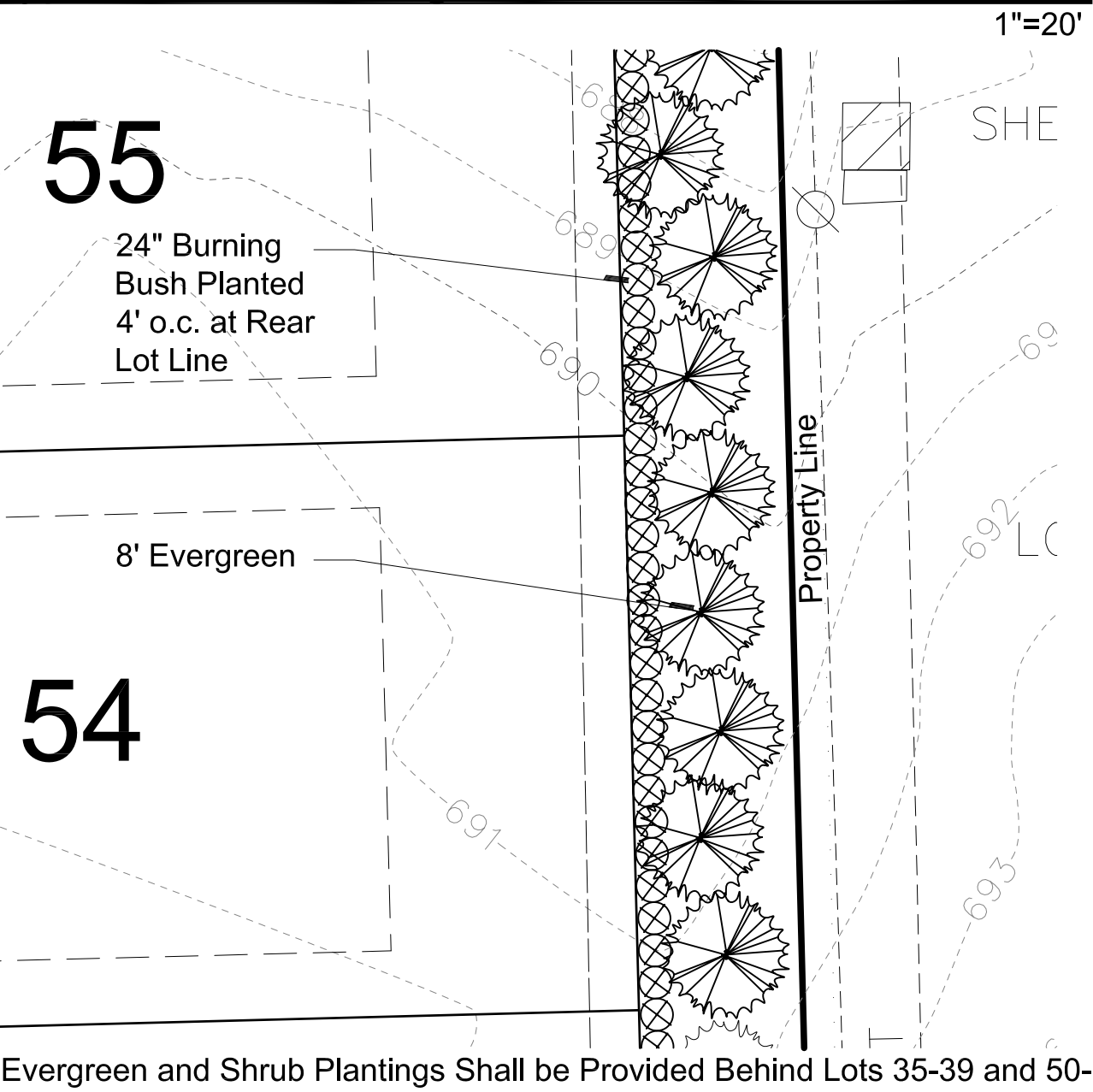
DRAWN BY:

CHECKED BY: DJL

SCALE: HOR 1"=200FT.
VER 1"=E. FT.

16-202

Typical Buffer Planting



Evergreen and Shrub Plantings Shall be Provided Behind Lots 35-39 and 50-57

Seal:

Title:
Landscape Plan

Project:

Vistancia
 Lemont, IL

Prepared for:

Odawa Development LLC
 51111 West Pontiac Trail
 Wixom, Michigan 48393

Revision: Issued:

Review	July 27, 2016
Revised	October 24, 2016
Revised	November 22, 2016
Revised	December 7, 2016

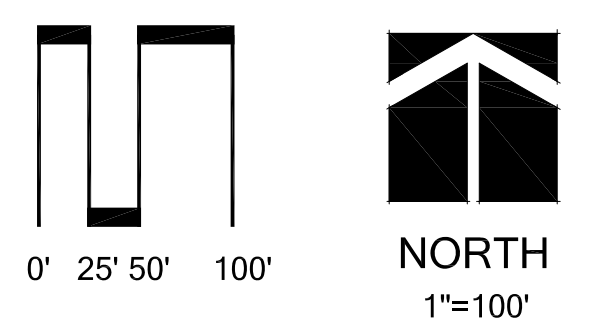
Job Number:

16-052

Drawn By: Checked By:

jca

jca



Sheet No.



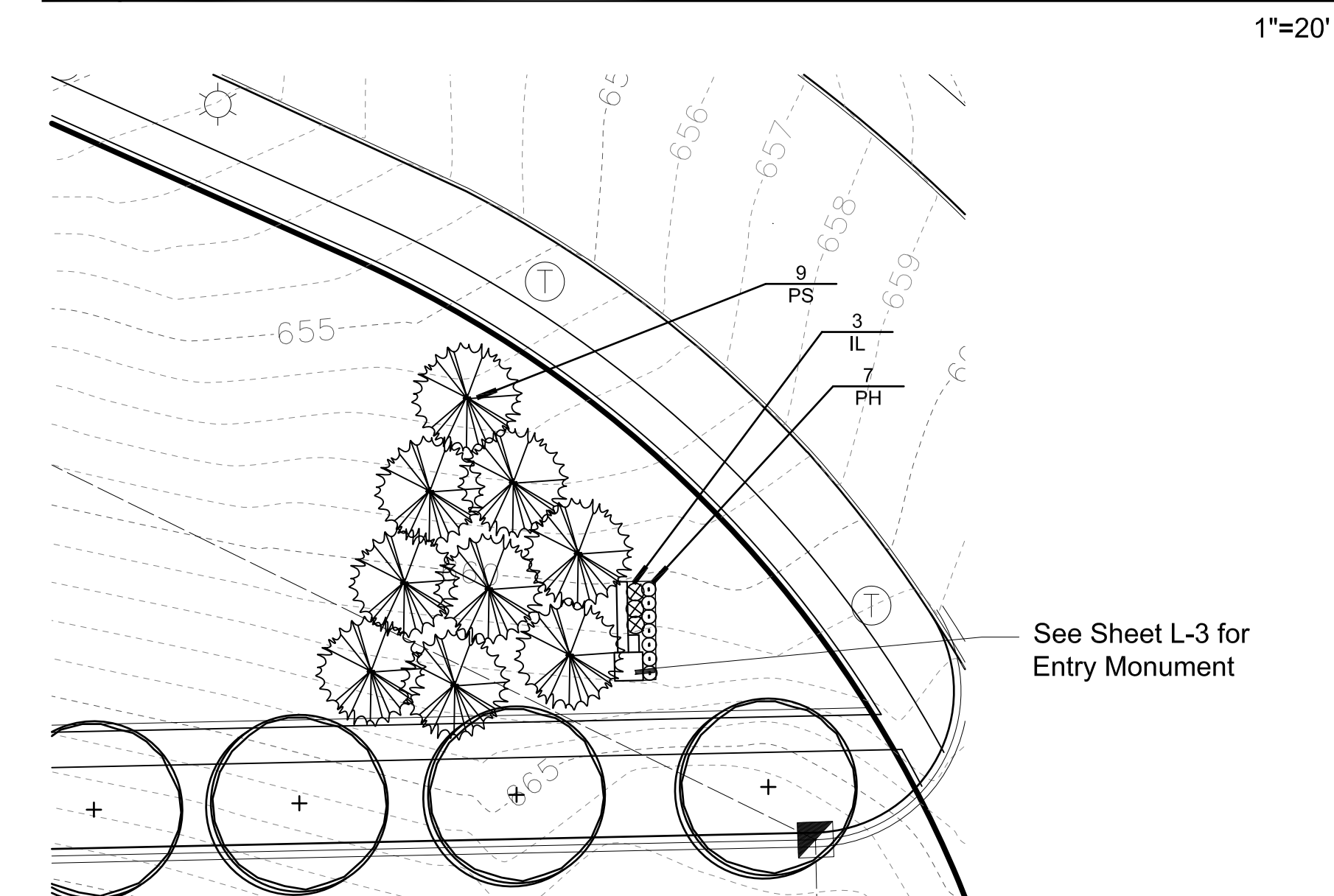
Landscape Summary

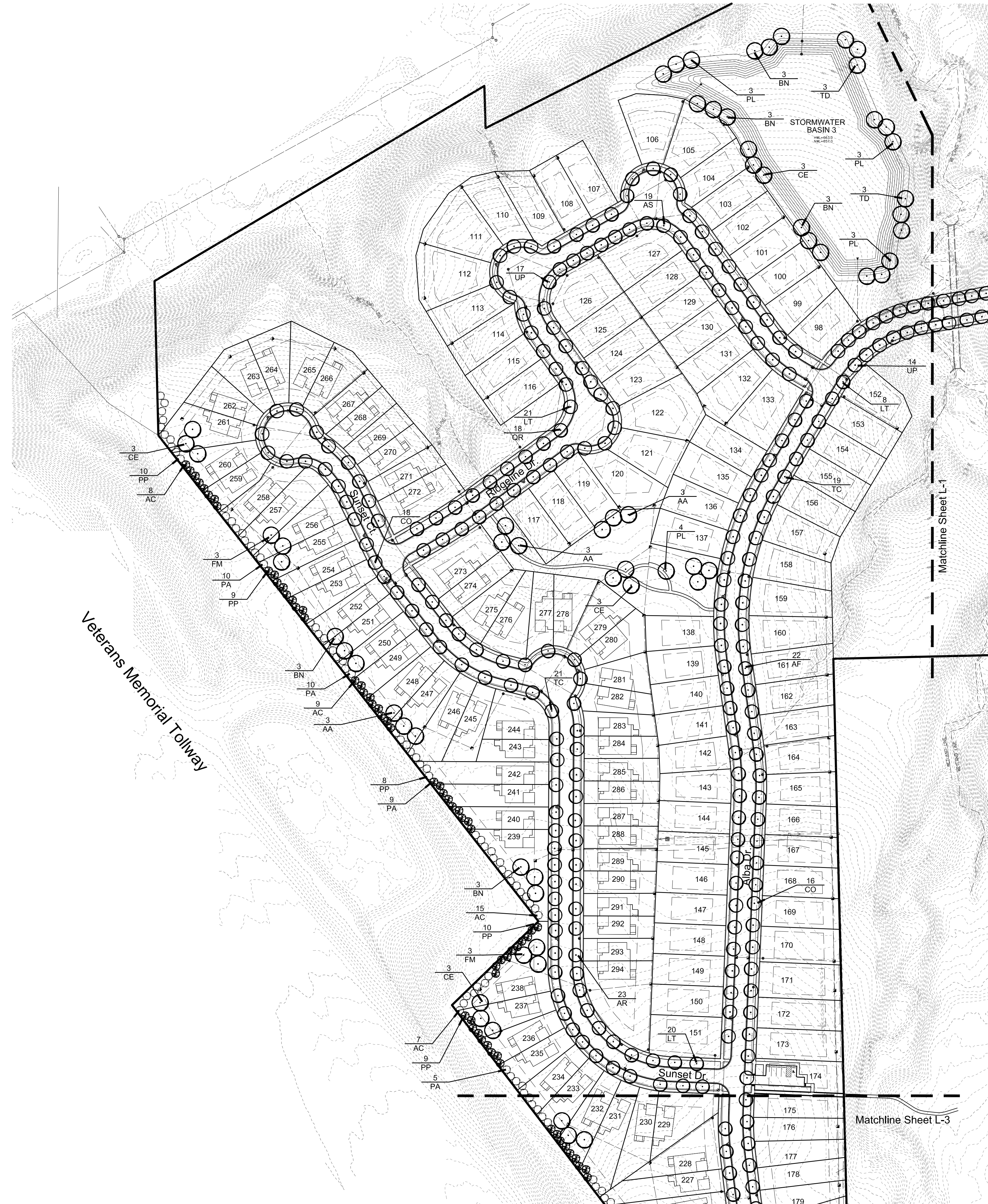
Street Trees	
Total Street Frontage	21,990 Lf.
Trees Required	550 Trees (21,990 / 40)
Trees Provided	550 Trees

Plant List

sym.	qty.	botanical name	common name	caliper	spacing	root	height
Street Trees							
AF	57	Acer x freemani	Freeman Maple	3.0"	as shown	B&B	
AS	34	Acer saccharum	Sugar Maple	3.0"	as shown	B&B	
CO	15	Celtis occidentalis	Northern Hackberry	3.0"	as shown	B&B	
LT	40	Liriodendron tulipifera	Tulip Tree	3.0"	as shown	B&B	
QR	40	Quercus rubra	Red Oak	3.0"	as shown	B&B	
TC	27	Tilia tomentosa	Silver Linden	3.0"	as shown	B&B	
UP	27	Ulmus x 'Pioneer'	Pioneer Elm	3.0"	as shown	B&B	
	240	Trees Provided					
Detention Pond							
BN	9	Betula nigra	River Birch	2.5"	as shown	B&B	
CE	6	Celtis occidentalis	Northern Hackberry	2.5"	as shown	B&B	
PL	9	Platanus x acerifolia 'Bloodgood'	London Planetree	2.5"	as shown	B&B	
TD	6	Taxodium distichum	Bald Cypress	2.5"	as shown	B&B	
		Total					
Buffer Plantings							
EA	282	Eunonymus alata 'Compacta'	Compact Burning Bush		as shown	B&B	24"
PA	35	Picea abies	Norway Spruce		as shown	B&B	8'
PP	35	Picea pungens	Green Spruce		as shown	B&B	8'
PS	44	Pinus strobus	White Pine		as shown	B&B	8'
Entry							
L	3	Ilex x m. 'Blue Boy' and 'Blue Girl'	Blue Boy Holly		as shown		36"
PH	7	Pennisetum a. 'Adagio'	Adagio Dwarf Fountain Grass		No. 2 Cont.		
PS	9	Pinus strobus	White Pine		as shown	B&B	12'-14'

Entry Plan





Plant List

sym.	qty.	botanical name	common name	caliper	spacing	root	height
Street Trees							
AF	22	Acer x freemanii	Freeman Maple	3.0"	as shown	B&B	
AR	23	Acer rubrum	Red Maple	3.0"	as shown	B&B	
AS	19	Acer saccharum	Sugar Maple	3.0"	as shown	B&B	
CO	34	Celtis occidentalis	Northern Hackberry	3.0"	as shown	B&B	
LT	49	Liriodendron tulipifera	Tulip Tree	3.0"	as shown	B&B	
QR	18	Quercus rubra	Red Oak	3.0"	as shown	B&B	
TC	40	Tilia tomentosa	Silver Linden	3.0"	as shown	B&B	
UP	31	Ulmus x 'Pioneer'	Pioneer Elm	3.0"	as shown	B&B	
	236	Trees Provided					
sym.	qty.	botanical name	common name	caliper	spacing	root	height
Detention Pond and Open Space							
AA	9	Acer saccharum	Sugar Maple	2.5"	as shown	B&B	
AC	39	Abies concolor	White Fir	as shown	B&B	8'	
BN	15	Betula nigra	River Birch	2.5"	as shown	B&B	
CE	12	Celtis occidentalis	Northern Hackberry	2.5"	as shown	B&B	
FM	6	Acer x freemanii	Freeman Maple	2.5"	as shown	B&B	
PL	13	Platanus x acerifolia 'Bloodgood'	London Planetree	2.5"	as shown	B&B	
PA	34	Picea abies	Norway Spruce	as shown	B&B	8'	
PP	45	Picea pungens	Green Spruce	as shown	B&B	8'	
TD	6	Taxodium distichum	Bald Cypress	2.5"	as shown	B&B	

Seal: _____

Title: Conceptual Plan

Project: _____

Vistancia
Lemont, IL

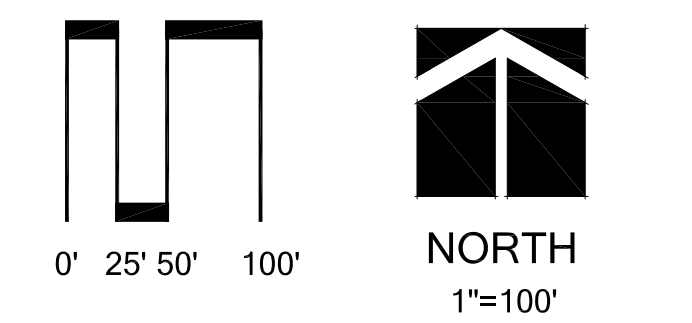
Prepared for: _____

Odawa Development LLC
51111 West Pontiac Trail
Wixom, Michigan 48393

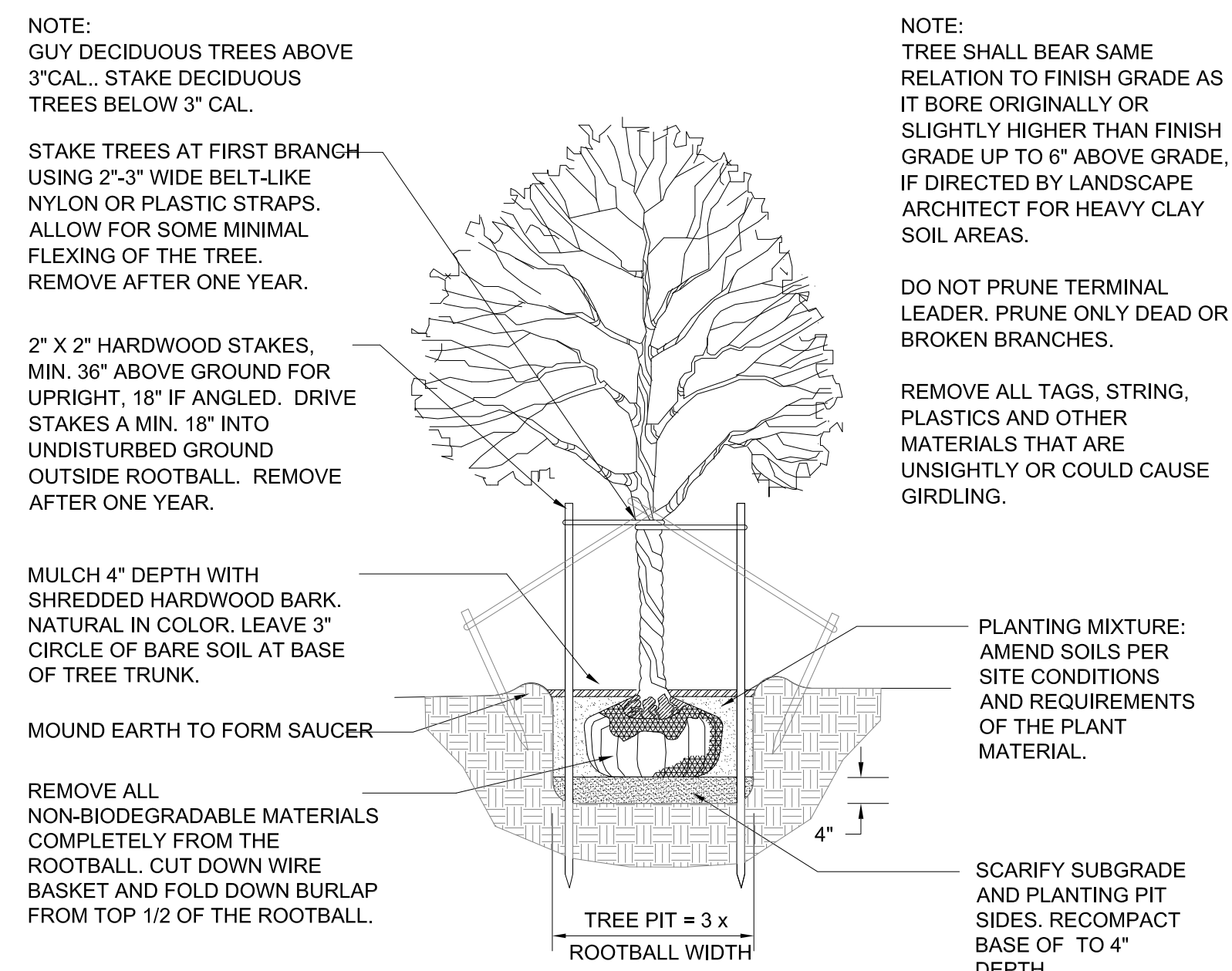
Revision:	Issued:
Review	July 27, 2016
Revised	October 24, 2016
Revised	November 22, 2016
Revised	December 7, 2016

Job Number: 16-052

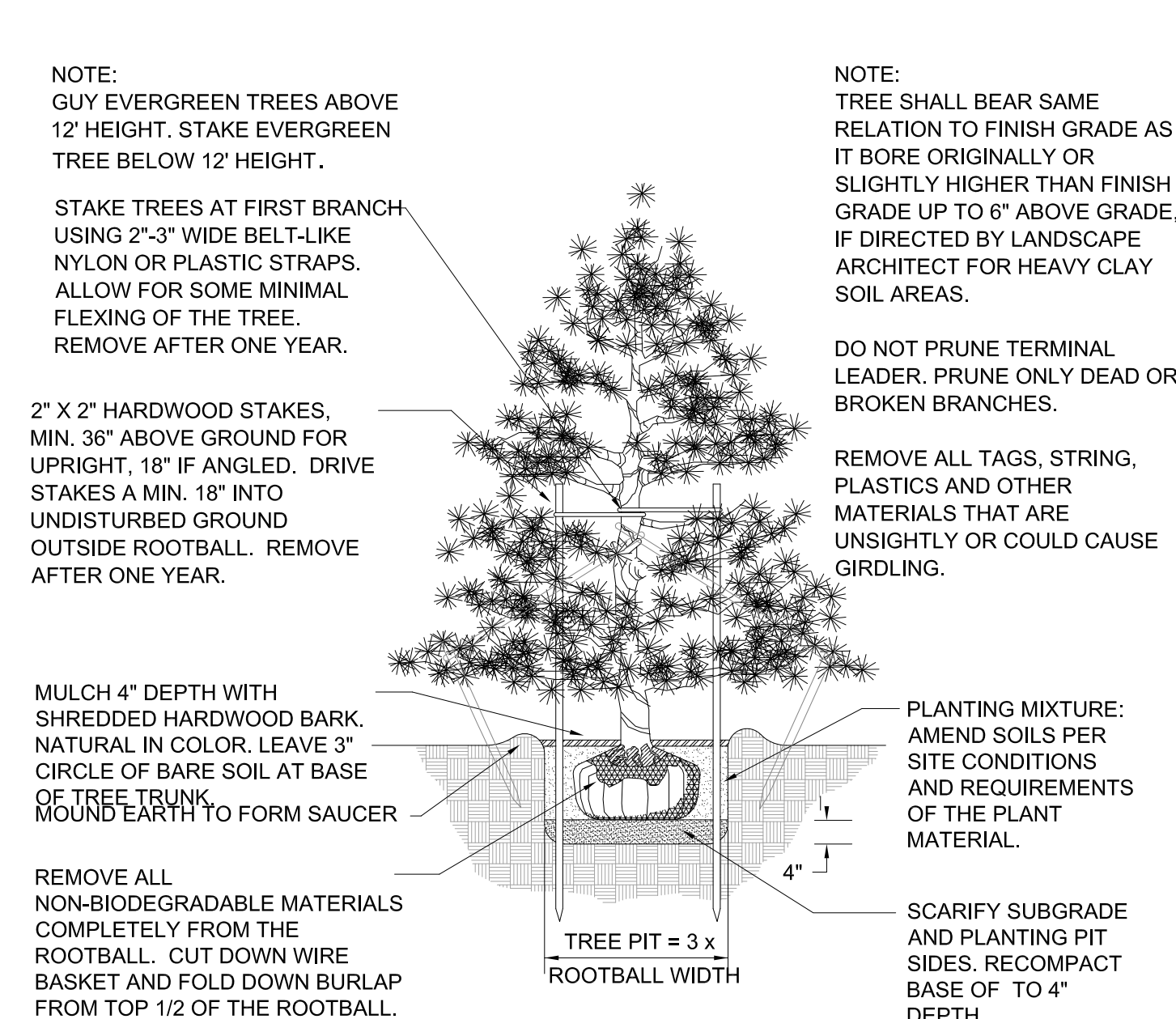
Drawn By: jca Checked By: jca



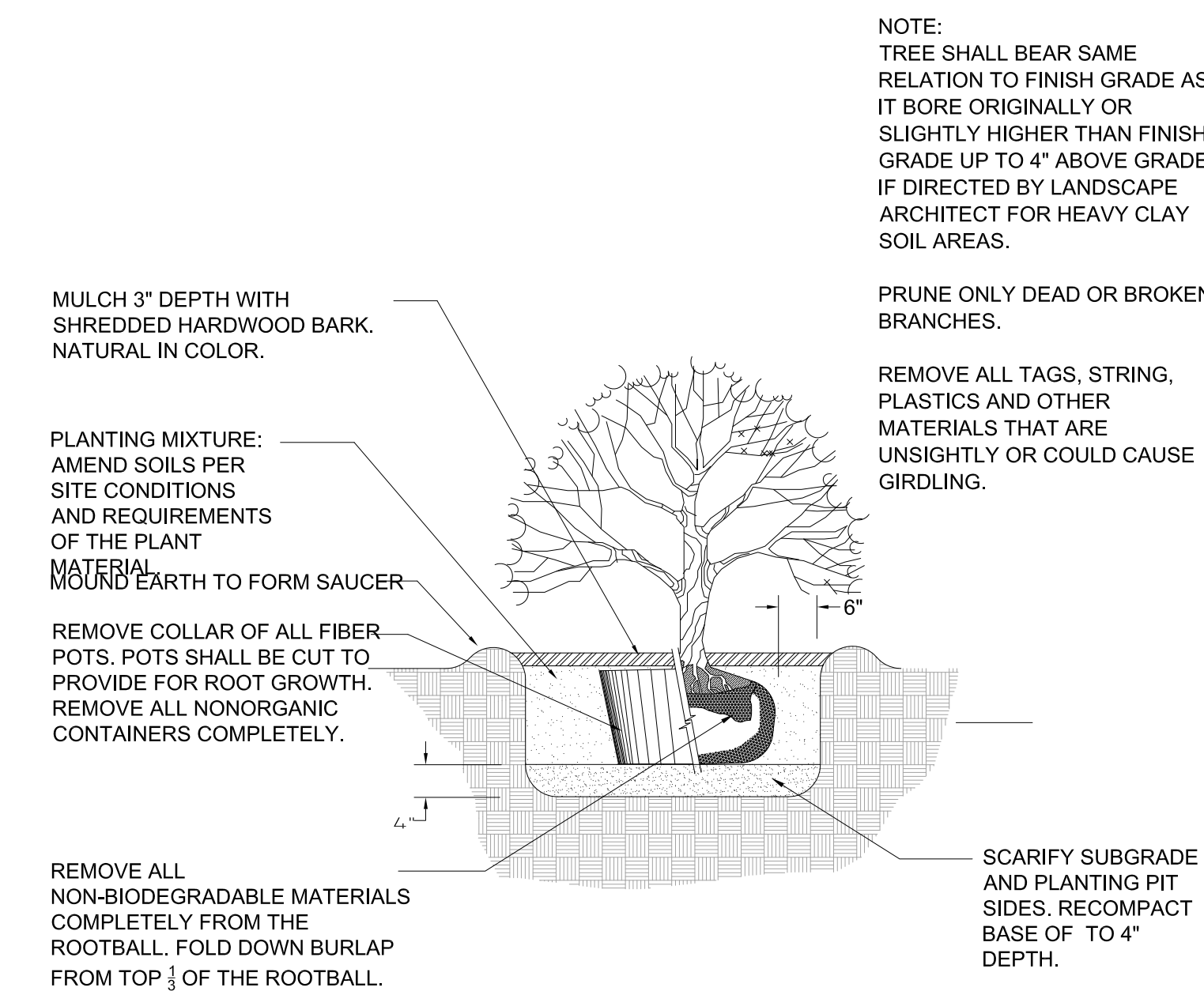
Sheet No. _____



DECIDUOUS TREE PLANTING DETAIL

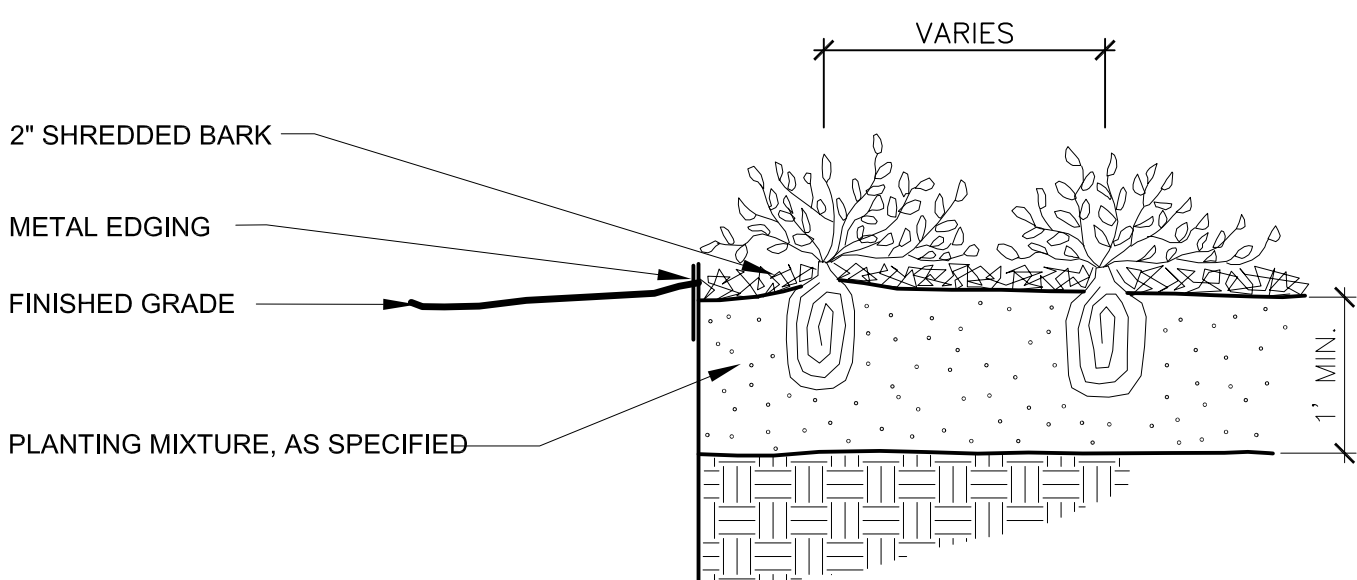


EVERGREEN TREE PLANTING DETAIL



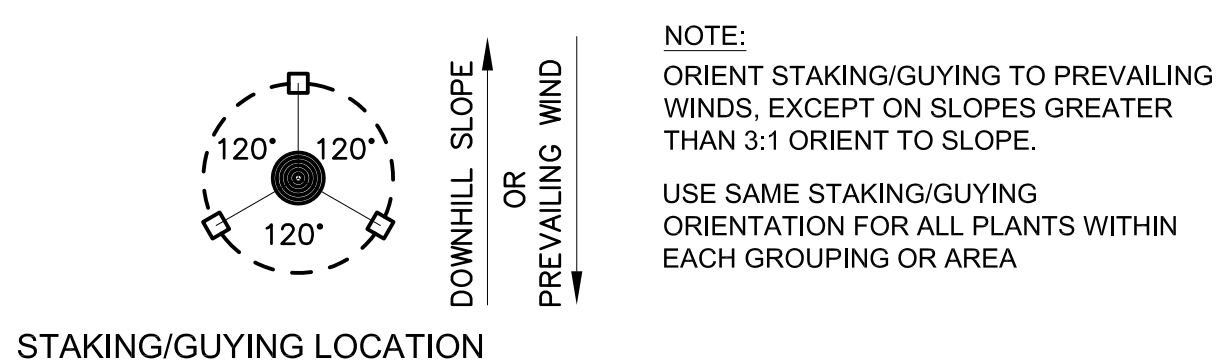
SHRUB PLANTING DETAIL

NOT TO SCALE

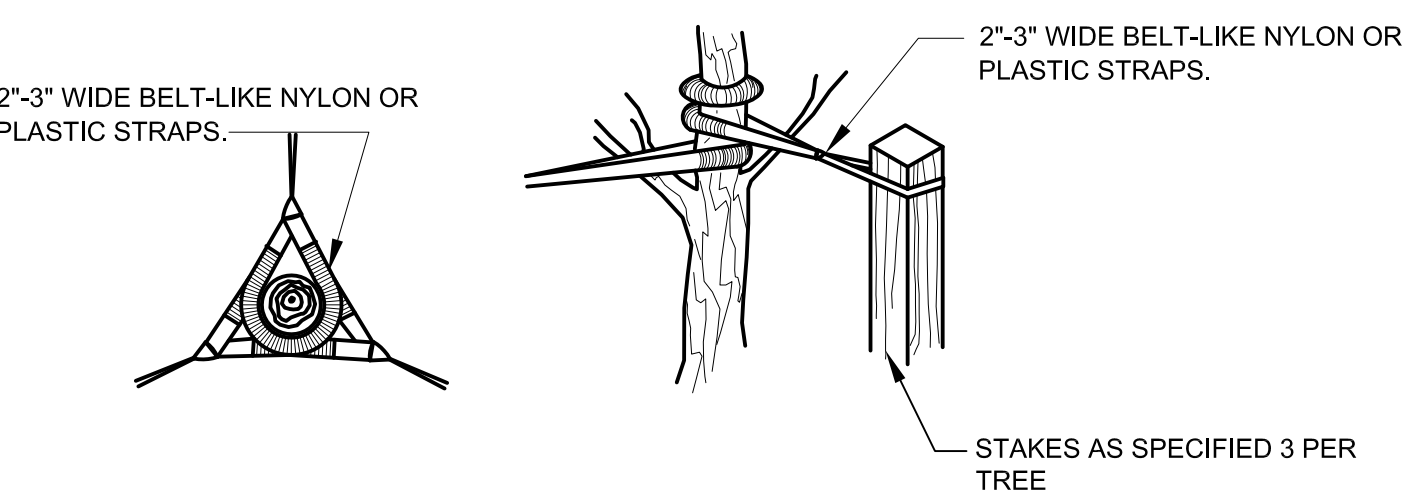


PERENNIAL PLANTING DETAIL

Not to scale



STAKING/GUYING LOCATION



GUYING DETAIL

STAKING DETAIL

TREE STAKING DETAIL

Not to scale

LANDSCAPE NOTES

- All plants shall be north Midwest American region grown, No. 1 grade plant materials, and shall be true to name, free from physical damage and wind burn.
- Plants shall be full, well-branched, and in healthy vigorous growing condition.
- Plants shall be watered before and after planting is complete.
- All trees must be staked, fertilized and mulched and shall be guaranteed to exhibit a normal growth cycle for at least two (2) full years following City approval.
- All material shall conform to the guidelines established in the most recent edition of the American Standard for Nursery Stock.
- Provide clean backfill soil, using material stockpiled on site. Soil shall be screened and free of any debris, foreign material, and stone.
- "Agriform" tabs or similar slow-release fertilizer shall be added to the planting pits before being backfilled.
- Amended planting mix shall consist of 1/3 screened topsoil, 1/3 sand and 1/3 peat, mixed well and spread to the depth as indicated in planting details.
- All plantings shall be mulched per planting details located on this sheet.
- The Landscape Contractor shall be responsible for all work shown on the landscape drawings and specifications.
- No substitutions or changes of location, or plant types shall be made without the approval of the Landscape Architect.
- The Landscape Architect shall be notified of any discrepancies between the plans and field conditions prior to installation.
- The Landscape Contractor shall be responsible for maintaining all plant material in a vertical condition throughout the guaranteed period.
- The Landscape Architect shall have the right, at any stage of the installation, to reject any work or material that does not meet the requirements of the plans and specifications, if requested by owner.
- Contractor shall be responsible for checking plant quantities to ensure quantities on drawings and plant list are the same. In the event of a discrepancy, the quantities on the plans shall prevail.
- The Landscape Contractor shall seed and mulch or sod (as indicated on plans) all areas disturbed during construction, throughout the contract limits.
- A pre-emergent weed control agent, "Preen" or equal, shall be applied uniformly on top of all mulching in all planting beds.
- All landscape areas shall be provided with an underground automatic sprinkler system.
- Sod shall be two year old "Baron/Cheriadelpi" Kentucky Blue Grass grown in a sod nursery on loam soil.
- Overhead utility lines and poles to be relocated as directed by utility company of record.
- Evergreen and canopy trees shall be planted a minimum of 10' from a fire hydrant, and manhole, 15' from overhead wires.
- All plant material shall be guaranteed for two (2) years after City Approval and shall be installed and maintained according to City of Novi standards. Replace Failing Material During the Next Appropriate Planting Period.
- All proposed street trees shall be planted a minimum of 4' from both the back of curb and proposed walks.
- All tree and shrub planting beds shall be mulched with shredded hardwood bark, spread to minimum depth of 4". All lawn area trees shall have a 4' diameter circle of shredded hardwood mulch 3" away from trunk. All perennial, annual and ground cover beds shall receive 2" of dark colored bark mulch as indicated on the plant list. Mulch is to be free from debris and foreign material, and shall contain no pieces of inconsistent size.

NOTES:
 THE APPROXIMATE DATE OF INSTALLATION FOR THE PROPOSED LANDSCAPE WILL BE BETWEEN MARCH-NOVEMBER

THE SITE WILL BE MAINTAINED BY THE DEVELOPER IN ACCORDANCE WITH THE STANDARDS SET FORTH IN THE CITY OF NOVI ZONING ORDINANCE. THIS INCLUDES WEEDING AND WATERING AS REQUIRED BY NORMAL MAINTENANCE PRACTICES.

DEVELOPER SHALL BE RESPONSIBLE FOR REPLACING ANY TREES WITHIN UTILITY EASEMENTS THAT ARE DAMAGED THROUGH NORMAL MAINTENANCE OR REPAIRS.

PLANT MATERIALS SHALL BE GUARANTEED FOR 2 YEARS AND SHALL BE MAINTAINED IN ACCORDANCE WITH CITY ORDINANCES. WARRANTY PERIOD BEGINS AT THE TIME OF CITY APPROVAL. WATERING AS NECESSARY SHALL OCCUR DURING THIS WARRANTY PERIOD.

Seal:

Title:

Landscape Details

Project:

Vistancia
 Lemont, IL

Prepared for:

Odawa Development LLC
 51111 West Pontiac Trail
 Wixom, Michigan 48393

Revision:

Issued:

Review	July 27, 2016
Revised	October 24, 2016
Revised	November 22, 2016
Revised	December 7, 2016

Job Number:

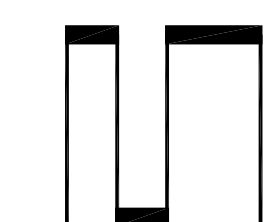
16-052

Drawn By:

jca

Checked By:

jca



NORTH

Sheet No.